



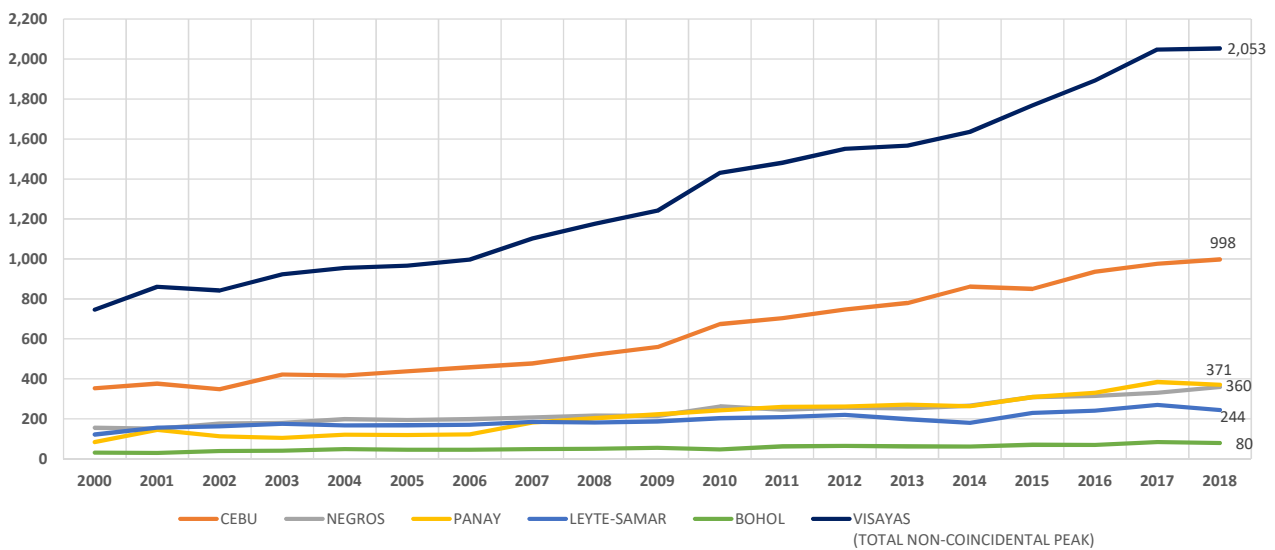
**DEPARTMENT OF ENERGY**  
**2018 POWER STATISTICS**

**Visayas Subgrids - Annual System Peak Demand per Grid as of 2018**  
**in MW**

Year	CEBU	% GR	NEGROS	% GR	PANAY	% GR	LEYTE-SAMAR	% GR	BOHOL	% GR	VISAYAS (TOTAL NON-COINCIDENTAL PEAK)	% GR
2000	353		156		84		122		32		746	
2001	377	6.6	151	(2.8)	146	73.9	156	28.1	31	(3.4)	861	15.3
2002	349	(7.4)	178	17.4	113	(22.4)	162	3.9	40	30.9	842	(2.2)
2003	422	21.0	179	0.9	105	(7.6)	175	7.9	41	3.3	923	9.5
2004	417	(1.1)	199	10.9	122	16.7	167	(4.5)	49	18.7	955	3.5
2005	438	4.9	195	(2.0)	120	(1.9)	168	0.7	46	(6.3)	967	1.3
2006	458	4.7	199	1.9	123	2.6	171	1.4	46	0.4	997	3.1
2007	477	4.1	209	5.1	182	48.2	186	8.8	49	5.4	1,102	10.6
2008	522	9.4	218	4.3	203	11.5	182	(2.2)	52	6.2	1,176	6.7
2009	559	7.1	215	(1.1)	223	9.9	188	3.5	56	7.8	1,241	5.5
2010	674	20.6	263	22.3	243	8.7	204	8.3	48	(14.2)	1,431	15.3
2011	704	4.4	245	(6.7)	260	7.2	209	2.8	62	30.8	1,481	3.5
2012	747	6.2	256	4.4	262	0.5	221	5.7	65	3.4	1,551	4.7
2013	780	4.4	253	(1.4)	272	3.8	199	(10.1)	63	(2.2)	1,567	1.0
2014	862	10.5	266	5.4	264	(2.7)	181	(8.7)	62	(2.2)	1,636	4.4
2015	850	(1.3)	309	15.9	309	16.8	230	26.5	70	14.2	1,768	8.1
2016	936	10.1	316	2.2	331	7.1	241	5.0	69	(1.7)	1,893	7.1
2017	976	4.3	331	5.0	385	16.3	270	12.1	84	21.9	2,047	8.1
2018	998	2.2	360	8.6	371	(3.5)	244	(9.7)	80	(5.3)	2,053	0.3
<b>%AAGR</b>												
2009-2018		6.8		5.5		6.4		3.5		5.3		5.8
2014-2018		5.1		7.4		6.8		5.0		5.4		5.6

Note:

- November 22, 1998 Panay Electric Co. (PECO) was isolated from the system
- Negros - Panay (100 MW) was interconnected thru Submarine Cable last October 17, 1990
- Cebu - Negros was interconnected thru Submarine Cable last January 26, 1994 (Phase I) 100 MW and August 2008 (Phase II) 100 MW
- Leyte-Cebu was interconnected last 1997 for Phase I (200 MW) and 2005 for Phase II (200 MW)
- Leyte-Bohol was interconnected last 2000 for Phase I (50 MW) and 2002 for Phase II (50 MW)
- Panay Power Corporation (PPC) availed ODPS Contract from July 1, 2001 to July 1, 2002
- Panay demand increased due to PPC synchronized to the system on 6 June 2007
- From 1998-2006 excludes demand of Panay Electric Co. (PPC) in Visayas Grid
- New 610 MW Coal-fired power plant (246 MW CEDC, 200 MW KSPC, 164 MW PEDC)
- Source of data from NGCP



Revised as of 29 March 2019