

Power Supply Procurement Plan 2021

SELINOG

(ZANECO)

Historical Consumption Data

	Coincident Peak MW	MWh Offtake	WESM	MWh Input	MWh Output	MWh System Loss	Load Factor	Discrepancy	Transm'n Loss	System Loss
2000	0.00	0	0	0	0	0	0%	0%	0%	0%
2001	0.00	0	0	0	0	0	0%	0%	0%	0%
2002	0.00	0	0	0	0	0	0%	0%	0%	0%
2003	0.00	0	0	0	0	0	0%	0%	0%	0%
2004	0.00	0	0	0	0	0	0%	0%	0%	0%
2005	0.00	0	0	0	0	0	0%	0%	0%	0%
2006	0.00	0	0	0	0	0	0%	0%	0%	0%
2007	0.00	0	0	0	0	0	0%	0%	0%	0%
2008	0.00	0	0	0	0	0	0%	0%	0%	0%
2009	0.00	0	0	0	0	0	0%	0%	0%	0%
2010	0.00	0	0	0	0	0	0%	0%	0%	0%
2011	0.00	0	0	0	0	0	0%	0%	0%	0%
2012	0.00	0	0	0	0	0	0%	0%	0%	0%
2013	0.00	0	0	0	0	0	0%	0%	0%	0%
2014	0.00	0	0	0	0	0	0%	0%	0%	0%
2015	0.00	0	0	0	0	0	0%	0%	0%	0%
2016	0.00	0	0	0	0	0	0%	0%	0%	0%
2017	0.00	0	0	0	0	0	0%	0%	0%	0%
2018	0.00	0	0	0	0	0	0%	0%	0%	0%
2019	0.00	0	0	0	0	0	0%	0%	0%	0%
2020	0.00	0	0	0	0	0	0%	0%	0%	0%

Since the Island of Selinog is not yet energized, no historical data can be provided.

Previous Year's Load Profile

The previous year's load profile and load curve is not available because it has no historical data.

Forecasted Consumption Data

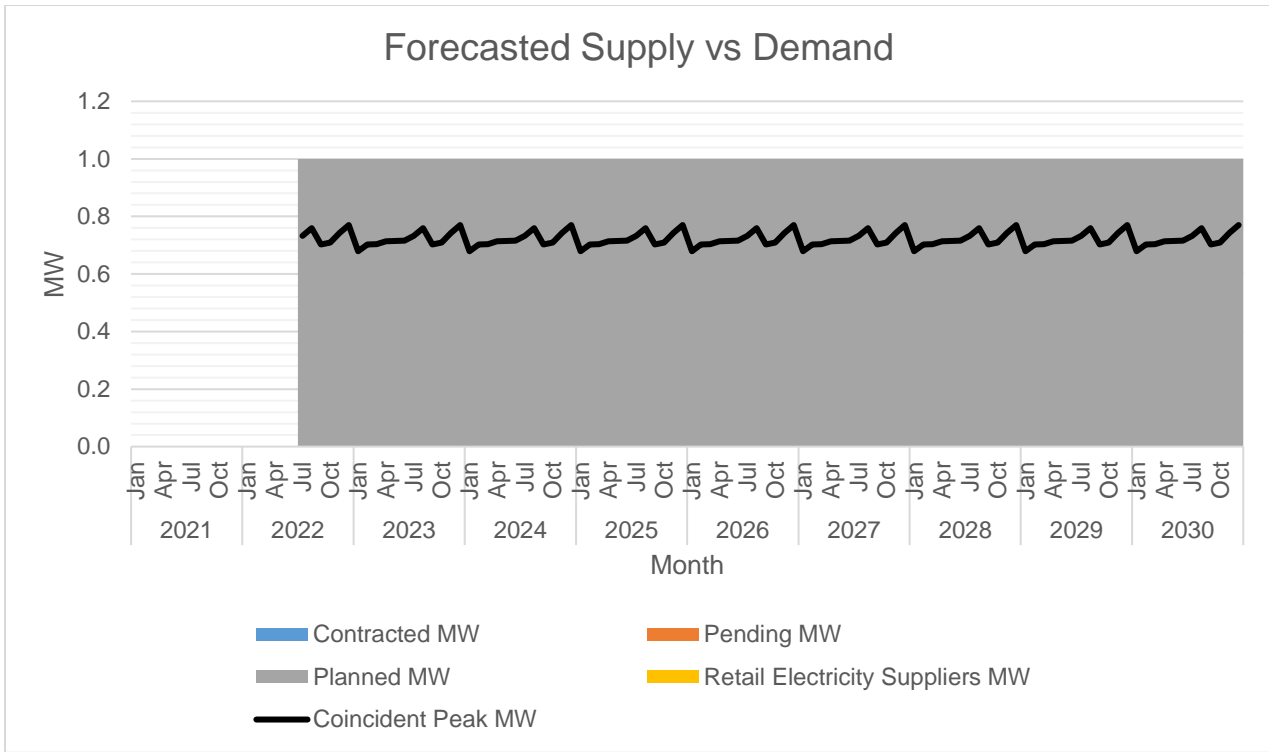
		Coincident Peak MW	Contracted MW	Pending MW	Planned MW	Retail Electricity Suppliers MW	Existing Contracting Level	Target Contracting Level	MW Surplus / Deficit
2021	Jan		0.00	0.00	0.000		0%	0%	0.00
	Feb		0.00	0.00	0.000		0%	0%	0.00
	Mar		0.00	0.00	0.000		0%	0%	0.00
	Apr		0.00	0.00	0.000		0%	0%	0.00
	May		0.00	0.00	0.000		0%	0%	0.00
	Jun		0.00	0.00	0.000		0%	0%	0.00
	Jul		0.00	0.00	0.000		0%	0%	0.00
	Aug		0.00	0.00	0.000		0%	0%	0.00
	Sep		0.00	0.00	0.000		0%	0%	0.00
	Oct		0.00	0.00	0.000		0%	0%	0.00
	Nov		0.00	0.00	0.000		0%	0%	0.00
	Dec		0.00	0.00	0.000		0%	0%	0.00
2022	Jan		0.00	0.00	0.000		0%	0%	0.00
	Feb		0.00	0.00	0.000		0%	0%	0.00
	Mar		0.00	0.00	0.000		0%	0%	0.00
	Apr		0.00	0.00	0.000		0%	0%	0.00
	May		0.00	0.00	0.000		0%	0%	0.00
	Jun		0.00	0.00	0.000		0%	0%	0.00
	Jul	0.73	0.00	0.00	1.000		0%	136%	0.27
	Aug	0.76	0.00	0.00	1.000		0%	132%	0.24
	Sep	0.70	0.00	0.00	1.000		0%	142%	0.30
	Oct	0.71	0.00	0.00	1.000		0%	141%	0.29
	Nov	0.74	0.00	0.00	1.000		0%	135%	0.26
	Dec	0.77	0.00	0.00	1.000		0%	130%	0.23
2023	Jan	0.68	0.00	0.00	1.000		0%	147%	0.32
	Feb	0.70	0.00	0.00	1.000		0%	142%	0.30
	Mar	0.70	0.00	0.00	1.000		0%	142%	0.30
	Apr	0.71	0.00	0.00	1.000		0%	140%	0.29
	May	0.72	0.00	0.00	1.000		0%	140%	0.29

	Jun	0.72	0.00	0.00	1.000		0%	140%	0.28
	Jul	0.73	0.00	0.00	1.000		0%	136%	0.27
	Aug	0.76	0.00	0.00	1.000		0%	132%	0.24
	Sep	0.70	0.00	0.00	1.000		0%	142%	0.30
	Oct	0.71	0.00	0.00	1.000		0%	141%	0.29
	Nov	0.74	0.00	0.00	1.000		0%	135%	0.26
	Dec	0.77	0.00	0.00	1.000		0%	130%	0.23
2024	Jan	0.68	0.00	0.00	1.000		0%	147%	0.32
	Feb	0.70	0.00	0.00	1.000		0%	142%	0.30
	Mar	0.70	0.00	0.00	1.000		0%	142%	0.30
	Apr	0.71	0.00	0.00	1.000		0%	140%	0.29
	May	0.72	0.00	0.00	1.000		0%	140%	0.29
	Jun	0.72	0.00	0.00	1.000		0%	140%	0.28
	Jul	0.73	0.00	0.00	1.000		0%	136%	0.27
	Aug	0.76	0.00	0.00	1.000		0%	132%	0.24
	Sep	0.70	0.00	0.00	1.000		0%	142%	0.30
	Oct	0.71	0.00	0.00	1.000		0%	141%	0.29
	Nov	0.74	0.00	0.00	1.000		0%	135%	0.26
	Dec	0.77	0.00	0.00	1.000		0%	130%	0.23
2025	Jan	0.68	0.00	0.00	1.000		0%	147%	0.32
	Feb	0.70	0.00	0.00	1.000		0%	142%	0.30
	Mar	0.70	0.00	0.00	1.000		0%	142%	0.30
	Apr	0.71	0.00	0.00	1.000		0%	140%	0.29
	May	0.72	0.00	0.00	1.000		0%	140%	0.29
	Jun	0.72	0.00	0.00	1.000		0%	140%	0.28
	Jul	0.73	0.00	0.00	1.000		0%	136%	0.27
	Aug	0.76	0.00	0.00	1.000		0%	132%	0.24
	Sep	0.70	0.00	0.00	1.000		0%	142%	0.30
	Oct	0.71	0.00	0.00	1.000		0%	141%	0.29
	Nov	0.74	0.00	0.00	1.000		0%	135%	0.26
	Dec	0.77	0.00	0.00	1.000		0%	130%	0.23
2026	Jan	0.68	0.00	0.00	1.000		0%	147%	0.32
	Feb	0.70	0.00	0.00	1.000		0%	142%	0.30
	Mar	0.70	0.00	0.00	1.000		0%	142%	0.30
	Apr	0.71	0.00	0.00	1.000		0%	140%	0.29

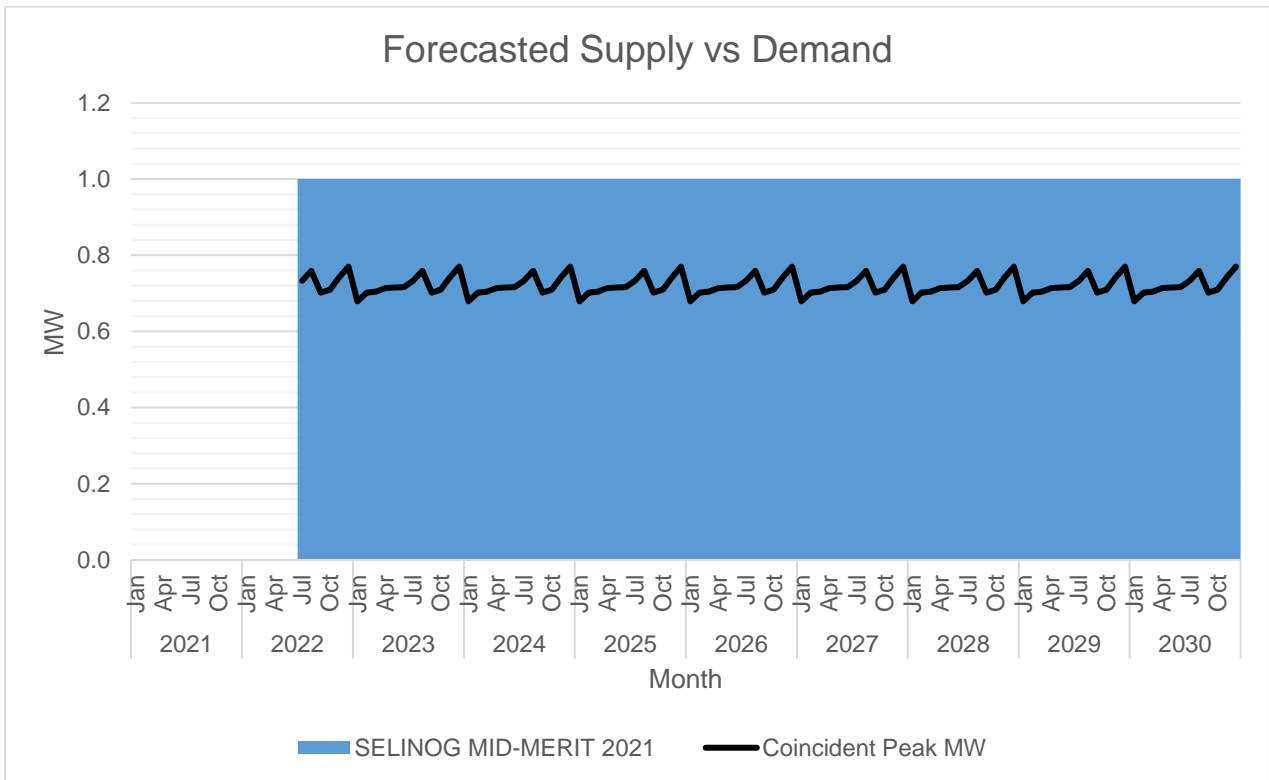
	May	0.72	0.00	0.00	1.000		0%	140%	0.29
	Jun	0.72	0.00	0.00	1.000		0%	140%	0.28
	Jul	0.73	0.00	0.00	1.000		0%	136%	0.27
	Aug	0.76	0.00	0.00	1.000		0%	132%	0.24
	Sep	0.70	0.00	0.00	1.000		0%	142%	0.30
	Oct	0.71	0.00	0.00	1.000		0%	141%	0.29
	Nov	0.74	0.00	0.00	1.000		0%	135%	0.26
	Dec	0.77	0.00	0.00	1.000		0%	130%	0.23
2027	Jan	0.68	0.00	0.00	1.000		0%	147%	0.32
	Feb	0.70	0.00	0.00	1.000		0%	142%	0.30
	Mar	0.70	0.00	0.00	1.000		0%	142%	0.30
	Apr	0.71	0.00	0.00	1.000		0%	140%	0.29
	May	0.72	0.00	0.00	1.000		0%	140%	0.29
	Jun	0.72	0.00	0.00	1.000		0%	140%	0.28
	Jul	0.73	0.00	0.00	1.000		0%	136%	0.27
	Aug	0.76	0.00	0.00	1.000		0%	132%	0.24
	Sep	0.70	0.00	0.00	1.000		0%	142%	0.30
	Oct	0.71	0.00	0.00	1.000		0%	141%	0.29
	Nov	0.74	0.00	0.00	1.000		0%	135%	0.26
	Dec	0.77	0.00	0.00	1.000		0%	130%	0.23
2028	Jan	0.68	0.00	0.00	1.000		0%	147%	0.32
	Feb	0.70	0.00	0.00	1.000		0%	142%	0.30
	Mar	0.70	0.00	0.00	1.000		0%	142%	0.30
	Apr	0.71	0.00	0.00	1.000		0%	140%	0.29
	May	0.72	0.00	0.00	1.000		0%	140%	0.29
	Jun	0.72	0.00	0.00	1.000		0%	140%	0.28
	Jul	0.73	0.00	0.00	1.000		0%	136%	0.27
	Aug	0.76	0.00	0.00	1.000		0%	132%	0.24
	Sep	0.70	0.00	0.00	1.000		0%	142%	0.30
	Oct	0.71	0.00	0.00	1.000		0%	141%	0.29
	Nov	0.74	0.00	0.00	1.000		0%	135%	0.26
	Dec	0.77	0.00	0.00	1.000		0%	130%	0.23
2029	Jan	0.68	0.00	0.00	1.000		0%	147%	0.32
	Feb	0.70	0.00	0.00	1.000		0%	142%	0.30
	Mar	0.70	0.00	0.00	1.000		0%	142%	0.30

	Apr	0.71	0.00	0.00	1.000		0%	140%	0.29
	May	0.72	0.00	0.00	1.000		0%	140%	0.29
	Jun	0.72	0.00	0.00	1.000		0%	140%	0.28
	Jul	0.73	0.00	0.00	1.000		0%	136%	0.27
	Aug	0.76	0.00	0.00	1.000		0%	132%	0.24
	Sep	0.70	0.00	0.00	1.000		0%	142%	0.30
	Oct	0.71	0.00	0.00	1.000		0%	141%	0.29
	Nov	0.74	0.00	0.00	1.000		0%	135%	0.26
	Dec	0.77	0.00	0.00	1.000		0%	130%	0.23
2030	Jan	0.68	0.00	0.00	1.000		0%	147%	0.32
	Feb	0.70	0.00	0.00	1.000		0%	142%	0.30
	Mar	0.70	0.00	0.00	1.000		0%	142%	0.30
	Apr	0.71	0.00	0.00	1.000		0%	140%	0.29
	May	0.72	0.00	0.00	1.000		0%	140%	0.29
	Jun	0.72	0.00	0.00	1.000		0%	140%	0.28
	Jul	0.73	0.00	0.00	1.000		0%	136%	0.27
	Aug	0.76	0.00	0.00	1.000		0%	132%	0.24
	Sep	0.70	0.00	0.00	1.000		0%	142%	0.30
	Oct	0.71	0.00	0.00	1.000		0%	141%	0.29
	Nov	0.74	0.00	0.00	1.000		0%	135%	0.26
	Dec	0.77	0.00	0.00	1.000		0%	130%	0.23

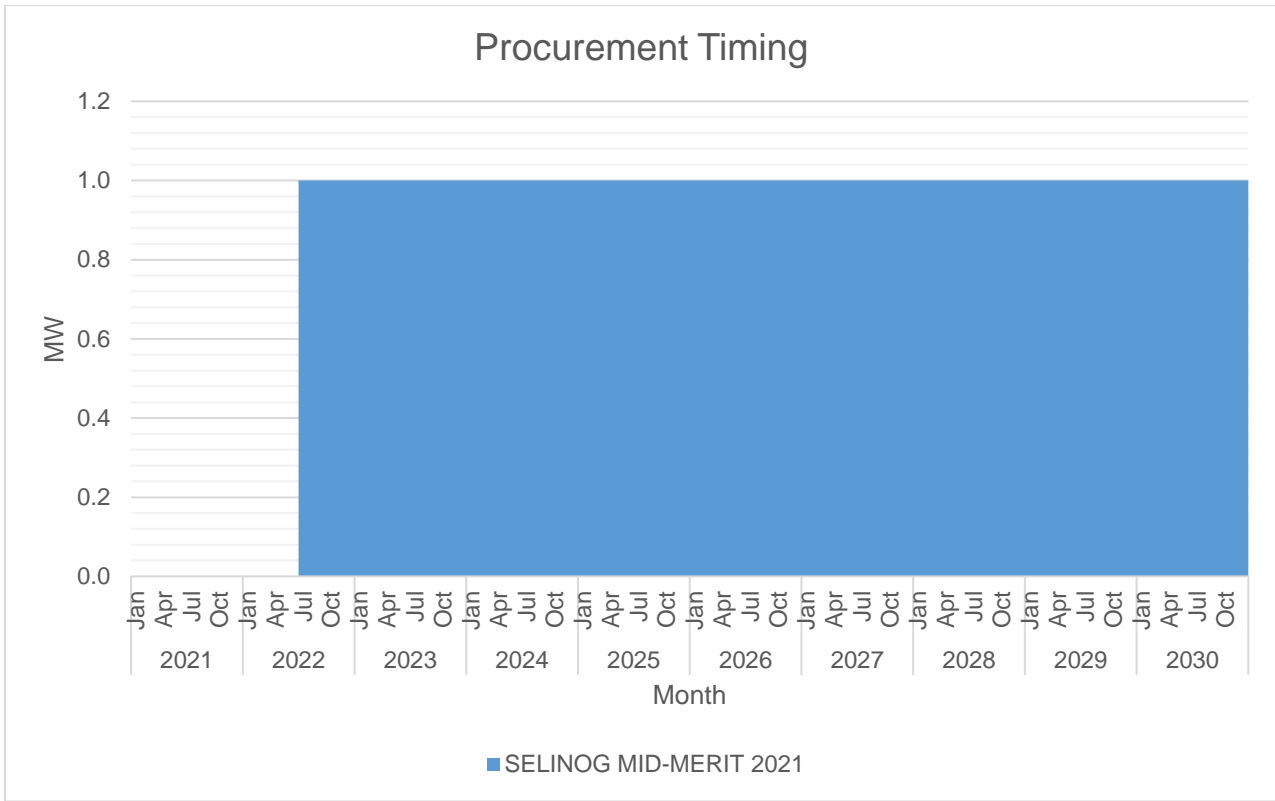
The Peak Demand was forecasted using Short Term Load Forecasting using Seasonal Effects and was assumed to occur on the month of December due to Christmas season. Monthly Peak Demand is at its lowest on the month of January due to its first month of the year. The data given was base from the actual survey of the island's potential consumers with a growth rate of 1.03% annually.



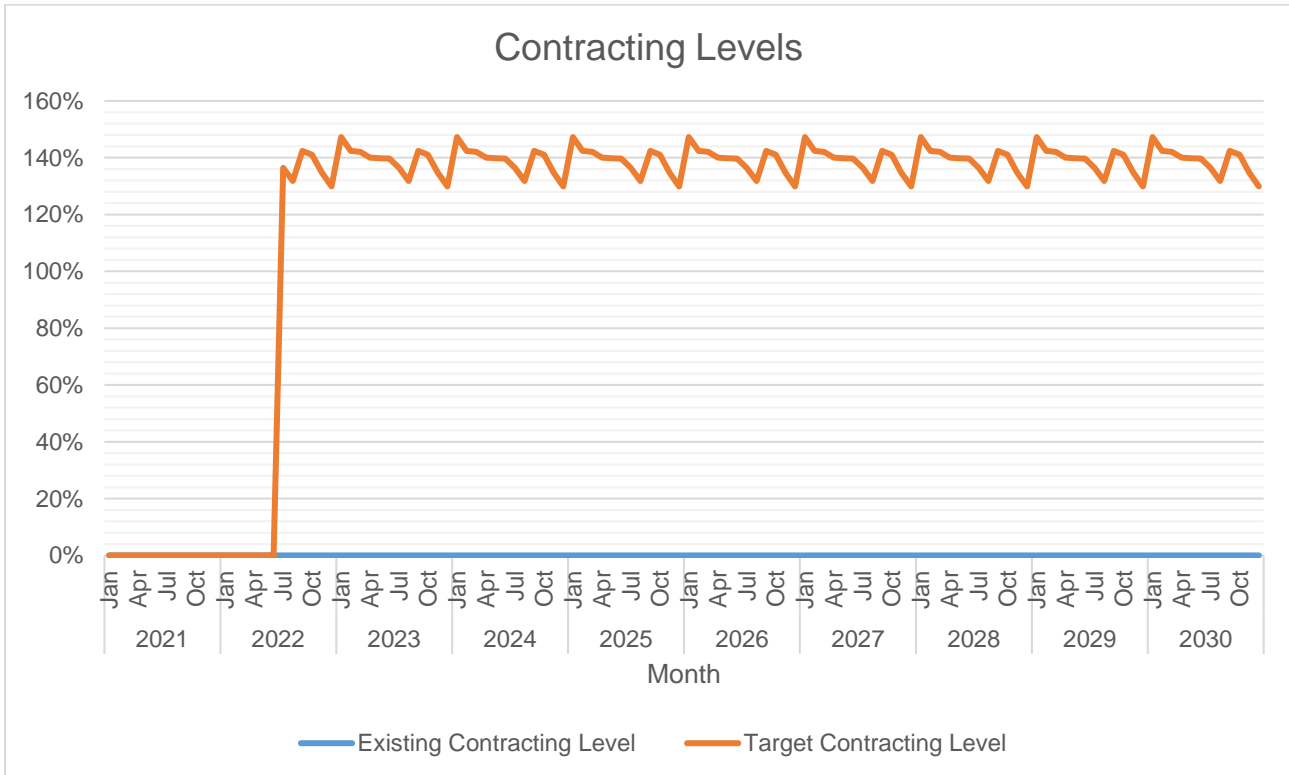
The available supply is generally above the Peak Demand. This is to ensure capacity for unprecedented potential new connections.



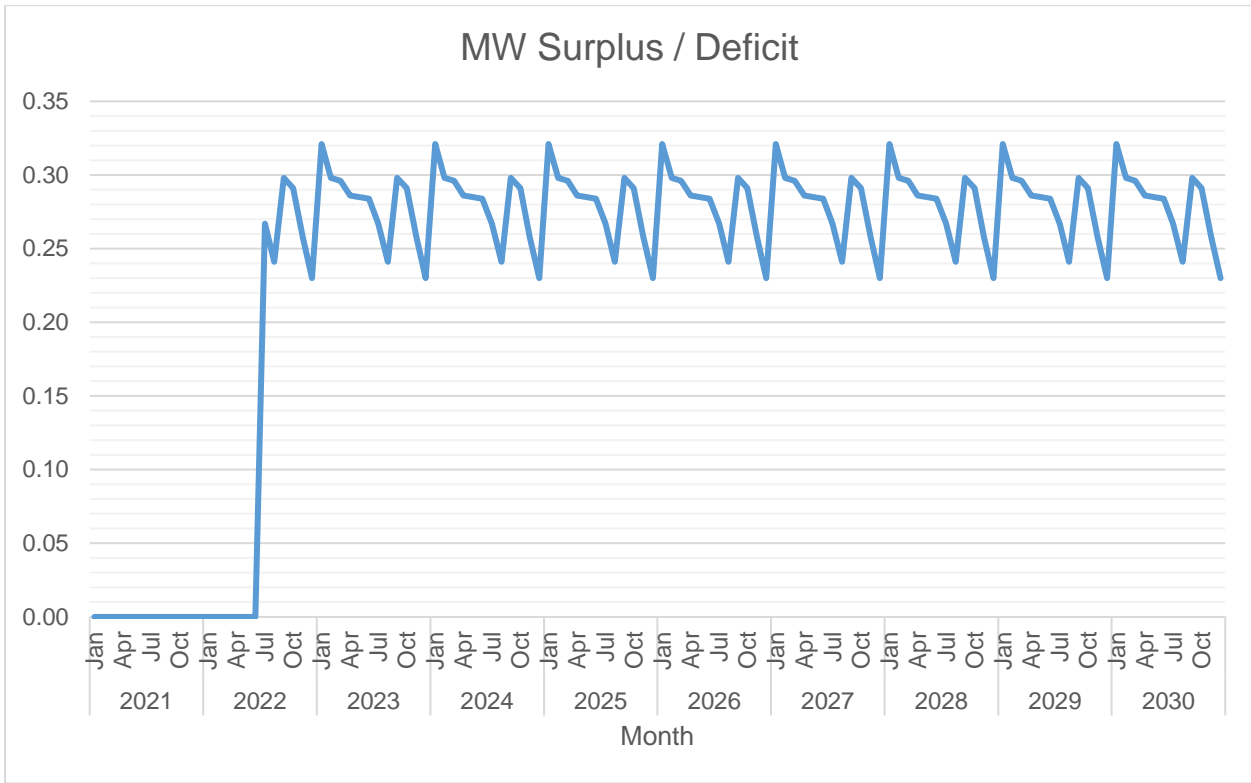
There is only one available supply which is subject for CSP this year 2021 with one (1) MW from a mid-merit power plant.



The first wave of supply procurement will be for 1 MW planned to be available by the month of July 2022.



Currently, there is no existing power supply contracts. The highest target contracting level is 147% which is expected to occur on the month of January. The lowest target contracting level is 130% which is expected to occur on the month of December.



Currently, there is no existing power supply contracts. The highest surplus is 0.32 MW which is expected to occur on the month of January. The lowest surplus is 0.23 MW which is expected to occur on the month of December.

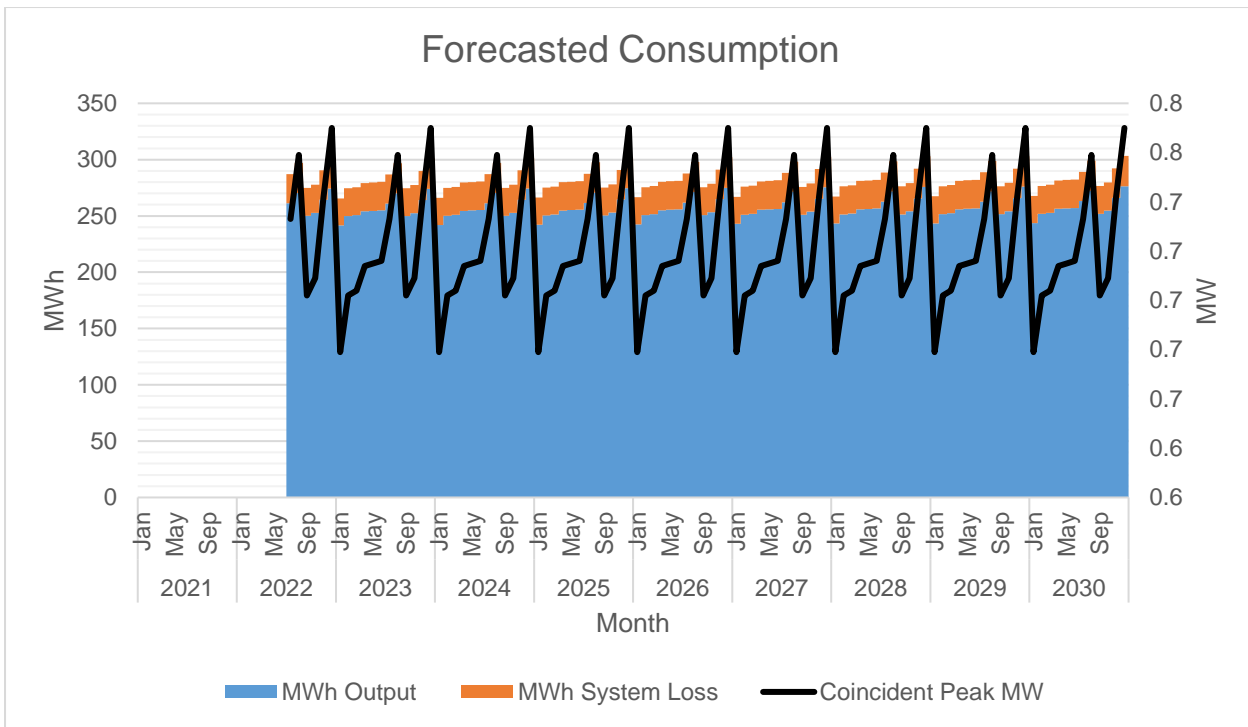
		MWh Offtake	MWh Output	MWh System Loss	Transm'n Loss	System Loss
2021	Jan	0	0	0	0.00%	0.00%
	Feb	0	0	0	0.00%	0.00%
	Mar	0	0	0	0.00%	0.00%
	Apr	0	0	0	0.00%	0.00%
	May	0	0	0	0.00%	0.00%
	Jun	0	0	0	0.00%	0.00%
	Jul	0	0	0	0.00%	0.00%
	Aug	0	0	0	0.00%	0.00%
	Sep	0	0	0	0.00%	0.00%
	Oct	0	0	0	0.00%	0.00%
	Nov	0	0	0	0.00%	0.00%
	Dec	0	0	0	0.00%	0.00%
2022	Jan	0	0	0	0.00%	0.00%
	Feb	0	0	0	0.00%	0.00%
	Mar	0	0	0	0.00%	0.00%
	Apr	0	0	0	0.00%	0.00%
	May	0	0	0	0.00%	0.00%
	Jun	0	0	0	0.00%	0.00%
	Jul	287	261	26	0.00%	9.00%
	Aug	297	270	27	0.00%	9.00%
	Sep	275	250	25	0.00%	9.00%
	Oct	278	253	25	0.00%	9.00%
	Nov	290	264	26	0.00%	9.00%
	Dec	301	274	27	0.00%	9.00%

2023	Jan	266	242	24	0.00%	9.00%
	Feb	275	250	25	0.00%	9.00%
	Mar	275	251	25	0.00%	9.00%
	Apr	279	254	25	0.00%	9.00%
	May	280	255	25	0.00%	9.00%
	Jun	280	255	25	0.00%	9.00%
	Jul	287	261	26	0.00%	9.00%
	Aug	297	270	27	0.00%	9.00%
	Sep	274	250	25	0.00%	9.00%
	Oct	277	252	25	0.00%	9.00%
	Nov	290	264	26	0.00%	9.00%
	Dec	301	274	27	0.00%	9.00%
2024	Jan	266	242	24	0.00%	9.00%
	Feb	275	250	25	0.00%	9.00%
	Mar	276	251	25	0.00%	9.00%
	Apr	280	254	25	0.00%	9.00%
	May	280	255	25	0.00%	9.00%
	Jun	281	255	25	0.00%	9.00%
	Jul	287	261	26	0.00%	9.00%
	Aug	297	270	27	0.00%	9.00%
	Sep	275	250	25	0.00%	9.00%
	Oct	278	253	25	0.00%	9.00%
	Nov	290	264	26	0.00%	9.00%
	Dec	301	274	27	0.00%	9.00%
2025	Jan	266	242	24	0.00%	9.00%
	Feb	275	250	25	0.00%	9.00%
	Mar	276	251	25	0.00%	9.00%
	Apr	280	255	25	0.00%	9.00%
	May	280	255	25	0.00%	9.00%
	Jun	281	256	25	0.00%	9.00%
	Jul	287	262	26	0.00%	9.00%
	Aug	298	271	27	0.00%	9.00%
	Sep	275	250	25	0.00%	9.00%
	Oct	278	253	25	0.00%	9.00%
	Nov	291	265	26	0.00%	9.00%
	Dec	302	275	27	0.00%	9.00%
2026	Jan	267	243	24	0.00%	9.00%
	Feb	276	251	25	0.00%	9.00%
	Mar	276	252	25	0.00%	9.00%
	Apr	280	255	25	0.00%	9.00%
	May	281	256	25	0.00%	9.00%
	Jun	281	256	25	0.00%	9.00%
	Jul	288	262	26	0.00%	9.00%
	Aug	298	271	27	0.00%	9.00%
	Sep	276	251	25	0.00%	9.00%
	Oct	278	253	25	0.00%	9.00%
	Nov	291	265	26	0.00%	9.00%
	Dec	302	275	27	0.00%	9.00%
2027	Jan	267	243	24	0.00%	9.00%
	Feb	276	251	25	0.00%	9.00%
	Mar	277	252	25	0.00%	9.00%

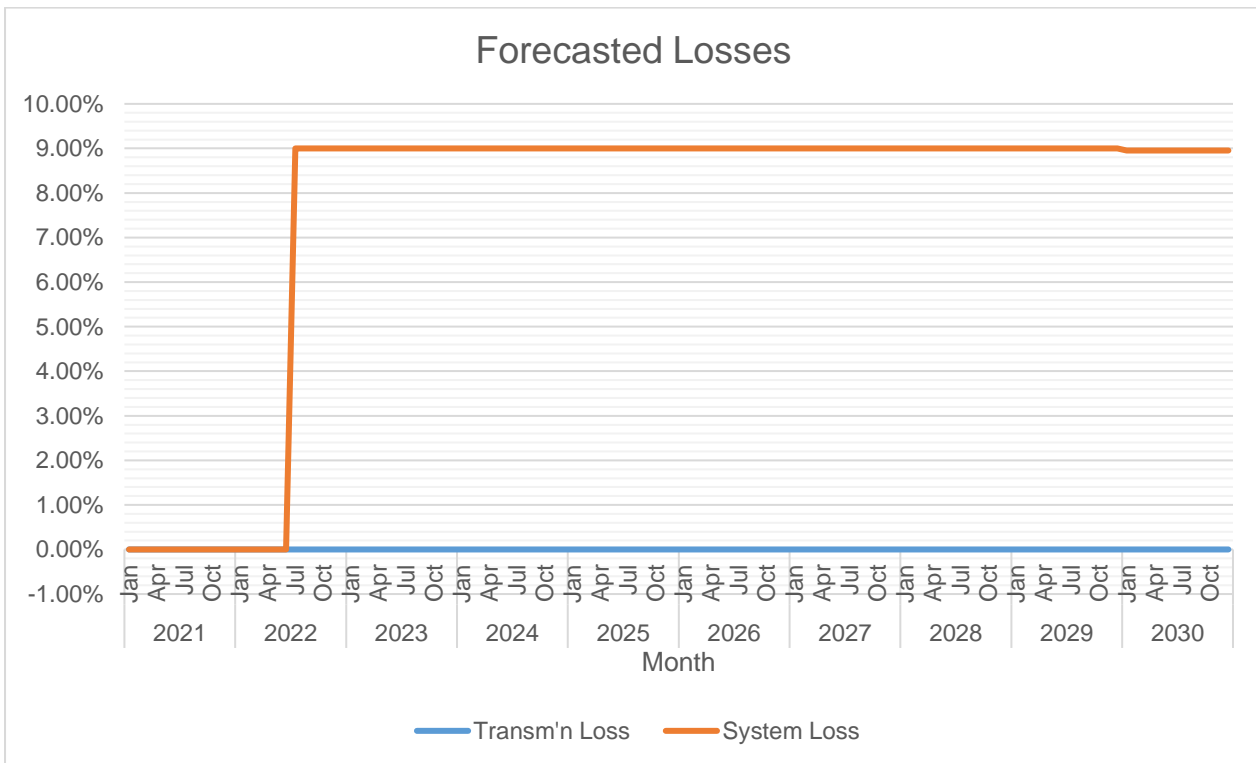
	Apr	281	255	25	0.00%	9.00%
	May	281	256	25	0.00%	9.00%
	Jun	282	256	25	0.00%	9.00%
	Jul	288	262	26	0.00%	9.00%
	Aug	298	271	27	0.00%	9.00%
	Sep	276	251	25	0.00%	9.00%
	Oct	279	254	25	0.00%	9.00%
	Nov	292	265	26	0.00%	9.00%
	Dec	303	275	27	0.00%	9.00%
2028	Jan	267	243	24	0.00%	9.00%
	Feb	276	251	25	0.00%	9.00%
	Mar	277	252	25	0.00%	9.00%
	Apr	281	256	25	0.00%	9.00%
	May	281	256	25	0.00%	9.00%
	Jun	282	257	25	0.00%	9.00%
	Jul	289	263	26	0.00%	9.00%
	Aug	299	272	27	0.00%	9.00%
	Sep	276	251	25	0.00%	9.00%
	Oct	279	254	25	0.00%	9.00%
	Nov	292	266	26	0.00%	9.00%
	Dec	303	276	27	0.00%	9.00%
2029	Jan	267	243	24	0.00%	9.00%
	Feb	276	252	25	0.00%	9.00%
	Mar	277	252	25	0.00%	9.00%
	Apr	281	256	25	0.00%	9.00%
	May	282	256	25	0.00%	9.00%
	Jun	282	257	25	0.00%	9.00%
	Jul	289	263	26	0.00%	9.00%
	Aug	299	272	27	0.00%	9.00%
	Sep	276	252	25	0.00%	9.00%
	Oct	279	254	25	0.00%	9.00%
	Nov	292	266	26	0.00%	9.00%
	Dec	303	276	27	0.00%	9.00%
2030	Jan	268	244	24	0.00%	8.95%
	Feb	277	252	25	0.00%	8.95%
	Mar	278	253	25	0.00%	8.95%
	Apr	281	256	25	0.00%	8.95%
	May	282	257	25	0.00%	8.95%
	Jun	282	257	25	0.00%	8.95%
	Jul	289	263	26	0.00%	8.95%
	Aug	299	272	27	0.00%	8.95%
	Sep	277	252	25	0.00%	8.95%
	Oct	280	255	25	0.00%	8.95%
	Nov	292	266	26	0.00%	8.95%
	Dec	303	276	27	0.00%	8.95%

MWh Offtake was forecasted using Short Term Load Forecasting using Seasonal Effects.

System Loss was calculated through a Load Flow Study conducted on February of 2021 by the Technical Data Processors (TDP) using Synergiee software. Based on the same study, the Distribution System can adequately convey electricity to customers.



The MWh Input and System Loss for Selinog has no progression over the forecast timeline because of the unavailability of historical data.



There is no Sub-Transmission Loss over the forecast timeline since it is an off-grid while System Loss is expected to range from 8.57% to 9.00%.

Power Supply

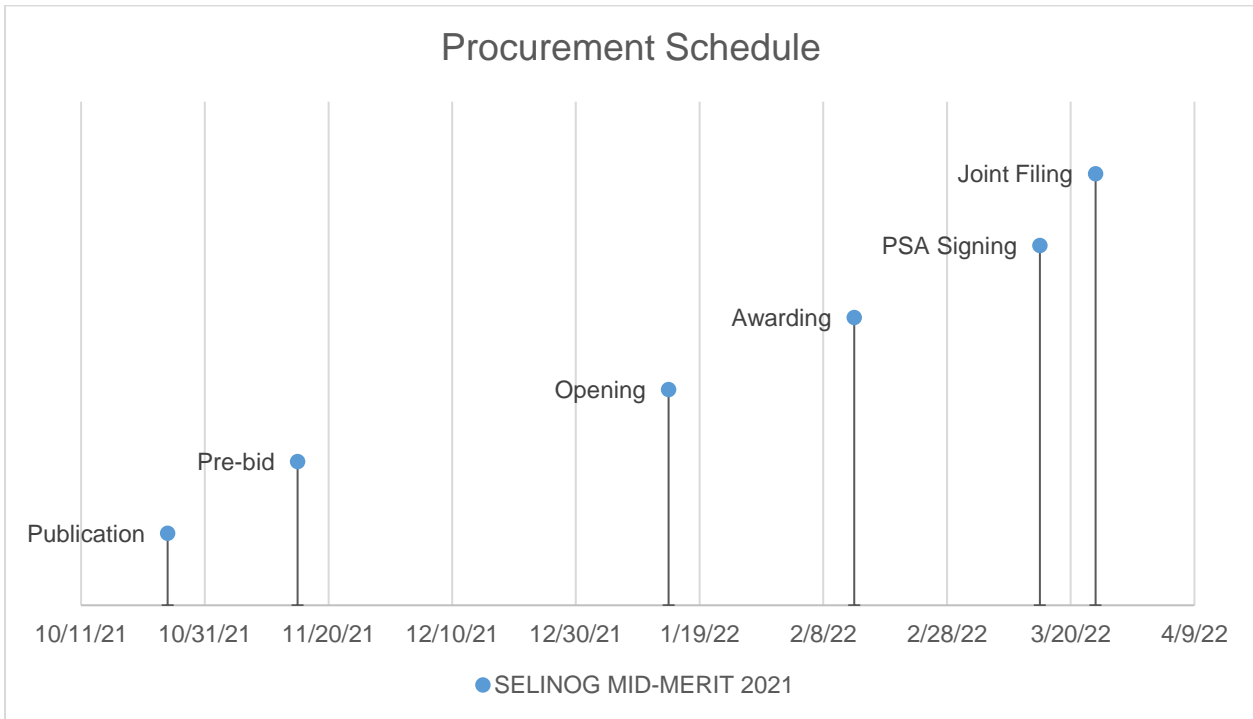
Case No.	Type	GenCo	Minimum MW	Minimum MWh/yr	PSA Start	PSA End
----------	------	-------	------------	----------------	-----------	---------

There is no existing power supply contracts procured for Selinog Island.

Case No.	Type	GenCo	Minimum MW	Minimum MWh/yr	PSA Start	PSA End
----------	------	-------	------------	----------------	-----------	---------

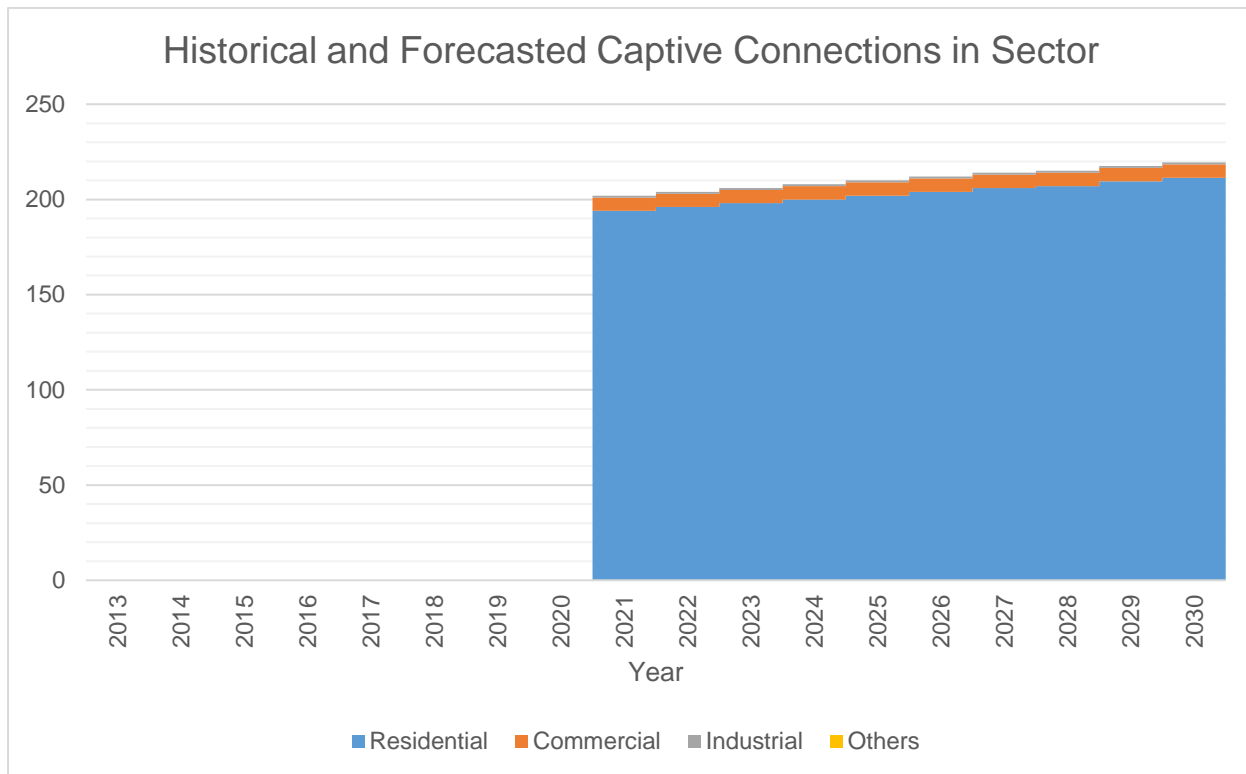
There is no existing power supply contracts procured for Selinog Island.

SELINOG MID-MERIT 2021	
Type	Intermediate
Minimum MW	1.00
Minimum MWh/yr	5,256
PSA Start	7/1/2022
PSA End	6/30/2032
Publication	10/25/2021
Pre-bid	11/15/2021
Opening	1/14/2022
Awarding	2/13/2022
PSA Signing	3/15/2022
Joint Filing	3/24/2022



For the procurement of 1 MW of supply which is planned to be available on July 2022, the first publication or launch of CSP will be tentatively on October 25, 2021. Joint filing is planned on March 24, 2022, or 150 days later, in accordance with DOE’s 2018 CSP Policy. These schedules are based on this PSPP for 2021. However, procurement of 1 MW of supply for Selinog is already approved by DOE under the ZANECO’s PSPP for the year 2020.

Captive Customer Connections



The number of residential connections is expected to grow at a rate of 1.03 % annually. Said customer class is expected to account for 12.29% of the total consumption.