

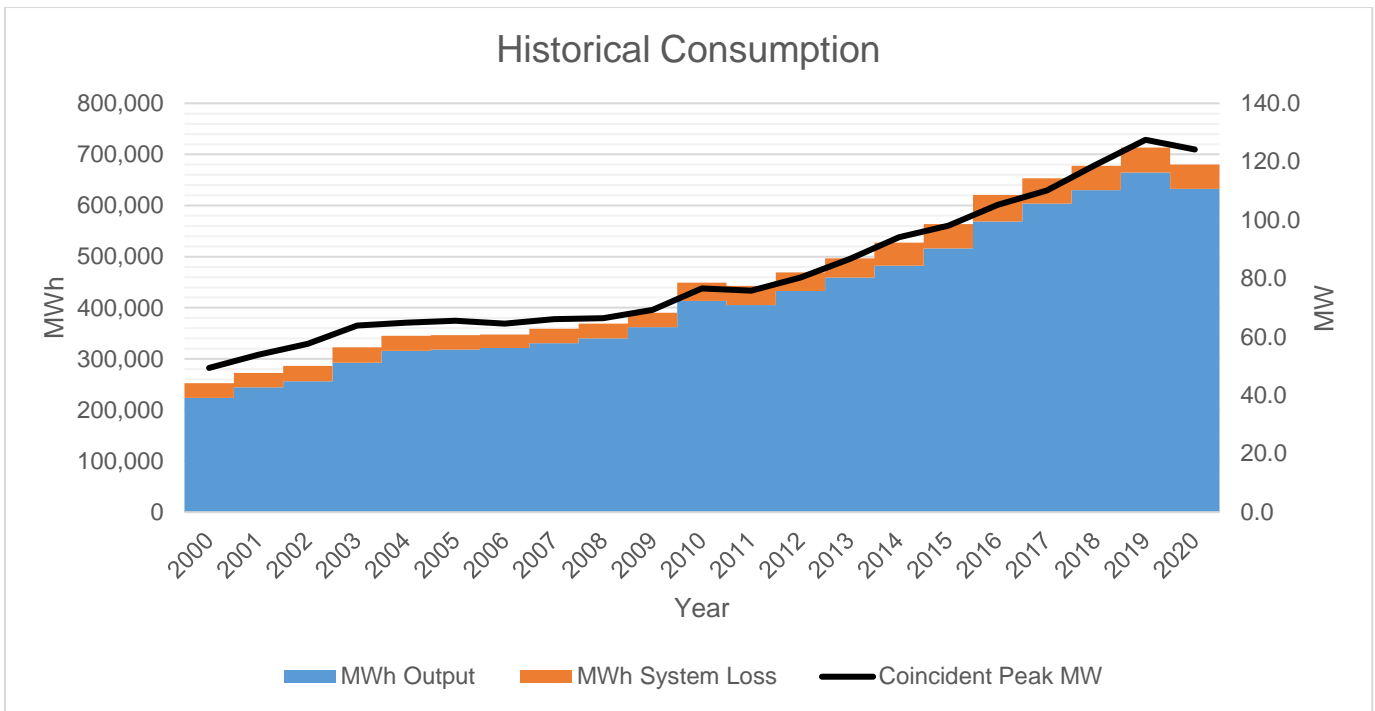
Power Supply Procurement Plan 2021

Angeles Electric Corporation

Historical Consumption Data

	Coincident Peak MW	MWh Offtake	WESM	MWh Input	MWh Output	MWh System Loss	Load Factor	Discrepancy	Transm'n Loss	System Loss
2000	49.40	252,275	0	252,275	223,875	28,401	58%	0.00%	0.00%	11.26%
2001	53.90	272,264	0	272,264	244,503	27,760	58%	0.00%	0.00%	10.20%
2002	57.70	286,550	0	286,550	256,393	30,158	57%	0.00%	0.00%	10.52%
2003	63.90	322,805	0	322,805	292,733	30,072	58%	0.00%	0.00%	9.32%
2004	64.90	345,155	0	345,155	315,390	29,765	61%	0.00%	0.00%	8.62%
2005	65.50	346,617	0	346,617	318,079	28,538	60%	0.00%	0.00%	8.23%
2006	64.60	347,695	0	347,695	321,303	26,391	61%	0.00%	0.00%	7.59%
2007	66.10	358,906	0	358,906	330,467	28,439	62%	0.00%	0.00%	7.92%
2008	66.40	368,708	0	368,708	340,026	28,681	63%	0.00%	0.00%	7.78%
2009	69.30	390,541	0	390,541	361,867	28,674	64%	0.00%	0.00%	7.34%
2010	76.60	448,952	0	448,952	413,607	35,344	67%	0.00%	0.00%	7.87%
2011	75.80	443,140	0	443,140	405,535	37,605	67%	0.00%	0.00%	8.49%
2012	80.30	469,130	0	469,130	432,709	36,421	67%	0.00%	0.00%	7.76%
2013	86.70	496,696	28,302	496,696	459,344	37,352	65%	0.00%	0.00%	7.52%
2014	94.20	527,254	175,581	527,254	482,472	44,782	64%	0.00%	0.00%	8.49%
2015	98.06	563,879	123,017	563,879	516,045	47,834	66%	0.00%	0.00%	8.48%
2016	105.20	620,675	84,226	620,675	568,600	52,075	67%	0.00%	0.00%	8.39%
2017	110.20	653,141	76,525	653,141	603,845	49,296	68%	0.00%	0.00%	7.55%
2018	119.00	677,955	126,993	677,955	629,940	48,016	65%	0.00%	0.00%	7.08%
2019	127.51	713,252	188,866	713,252	664,887	48,365	64%	0.00%	0.00%	6.78%
2020	124.16	680,098	152,203	680,098	632,762	47,336	63%	0.00%	0.00%	6.96%

Peak Demand increased from 49.4 MW in year 2000 to 124.16 MW in 2020 at an average rate of 4.79%. It slightly dropped from 127.51 in 2019 to 124.16 in 2020 because of the effects of the COVID-19 Pandemic. On the other hand, MWh Offtake increased at an average rate of 5.18% for the same period. Within the same period, Load Factor ranged from 58% to 68%. There was a large spike in consumption in years 2010 and 2016 as these were characterized by abnormally warm temperatures in the summer primarily brought about by the El Nino Phenomenon. Finally, there was a decrease in consumption, from 713 GWh in 2019 to 680 GWh in 2020 because of the COVID-19 Pandemic.

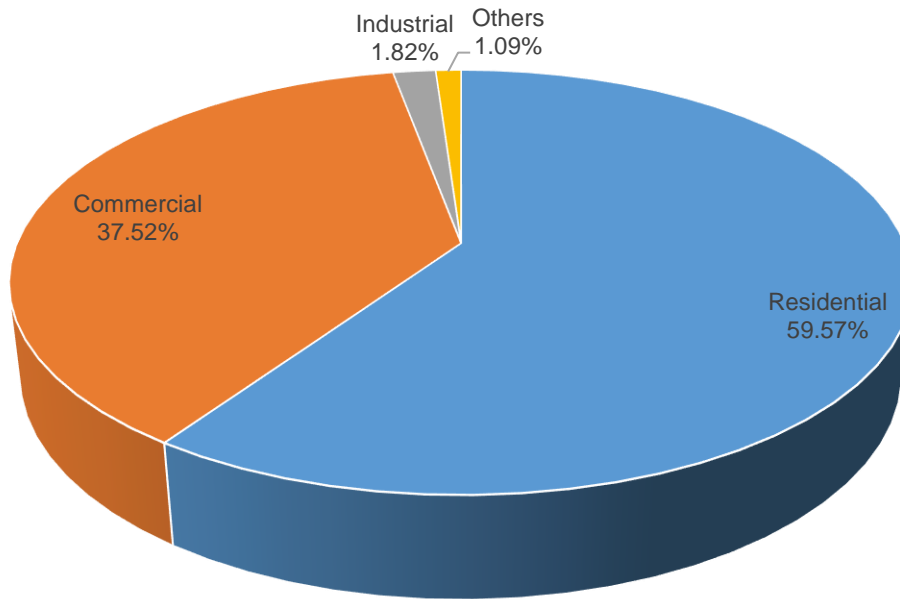


MWh Output increased from year 2000 to year 2020 at a rate of 5.43%, while MWh System Loss only increased at a rate of 2.87% within the same period.



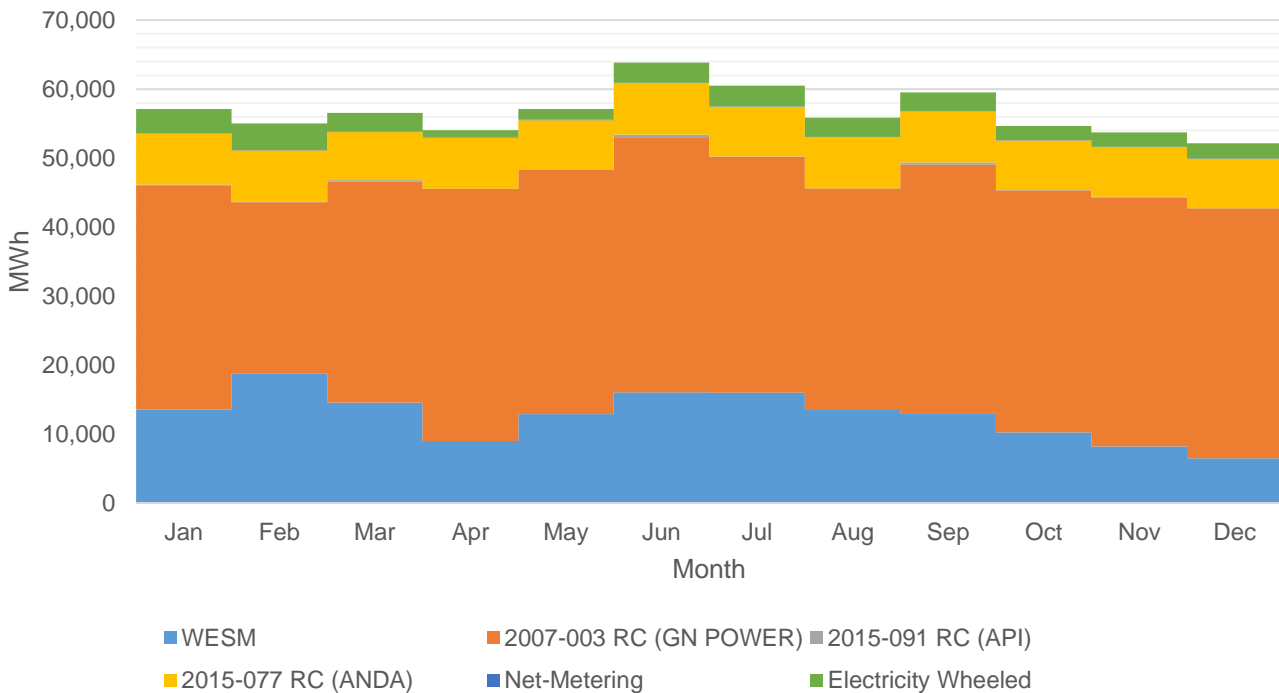
Historically, System Loss ranged from 6.78% to 11.26%. System Loss was highest at 11.26% in year 2000 which prompted AEC to implement more stringent technical and non-technical loss-reduction schemes. Starting year 2017, AEC filed applications to ERC and implemented capital expenditure (capex) projects to address system losses in view of the provisions of ERC Resolution No. 20, Series of 2017. Some capex implemented are reconductoring projects, purchase of lower core-loss amorphous distribution transformers, and replacement of electromechanical kilowatt-hour meters with electronic meters. These helped in the gradual reduction of distribution system losses, culminating at 6.78% in year 2019. However, due mainly to the abnormal increase in residential consumption spurred by the pandemic, distribution system losses went up slightly from 6.78% in 2019 to 6.96% in 2020.

Previous Year's Shares of Energy Sales

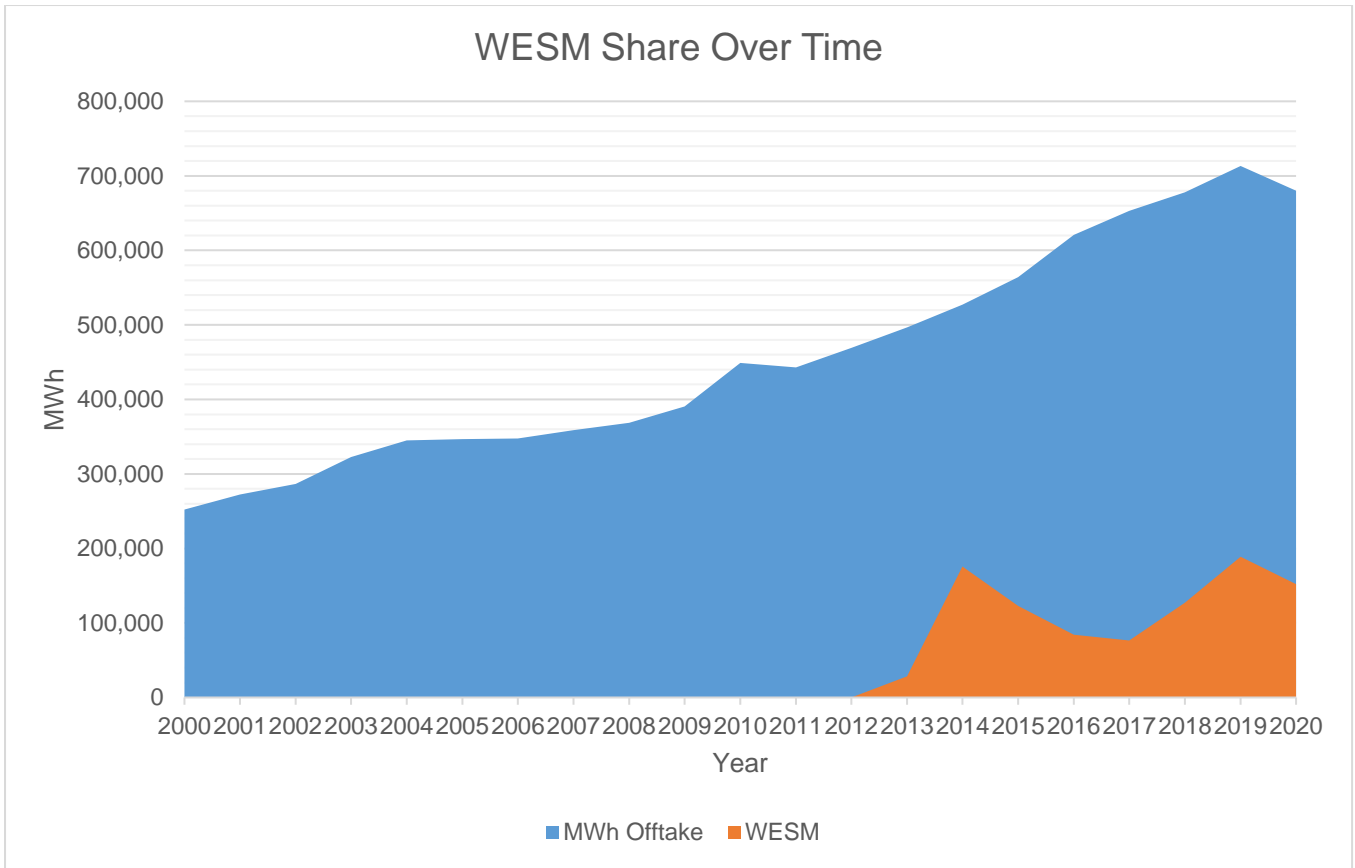


For Year 2020, residential customers account for the bulk of energy sales at 59.57%. Sales in other customer classes decreased from their 2019 levels because of the effects of the COVID 19 Pandemic.

MWh Offtake for Last Historical Year

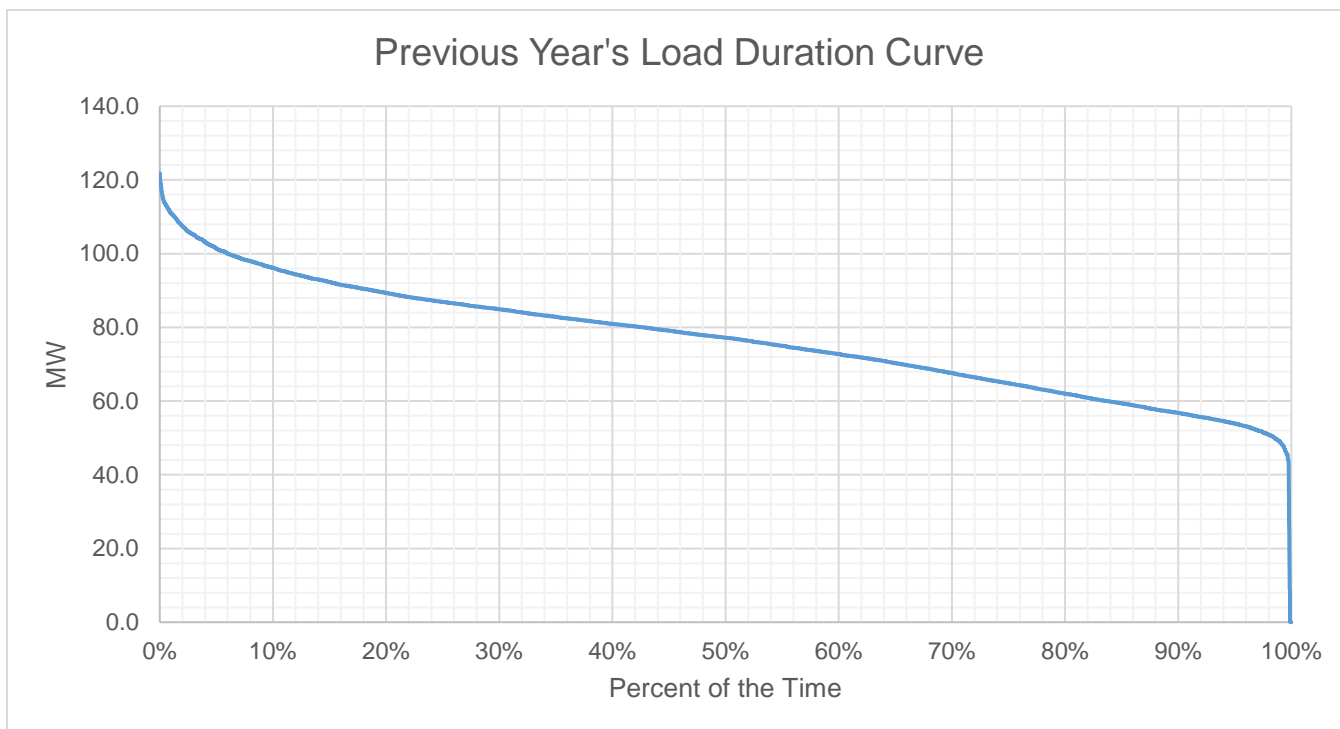


Energy Offtake from GN Power at 408,165 MWh (or 60%) accounted for the bulk of MWh Offtake for year 2020.

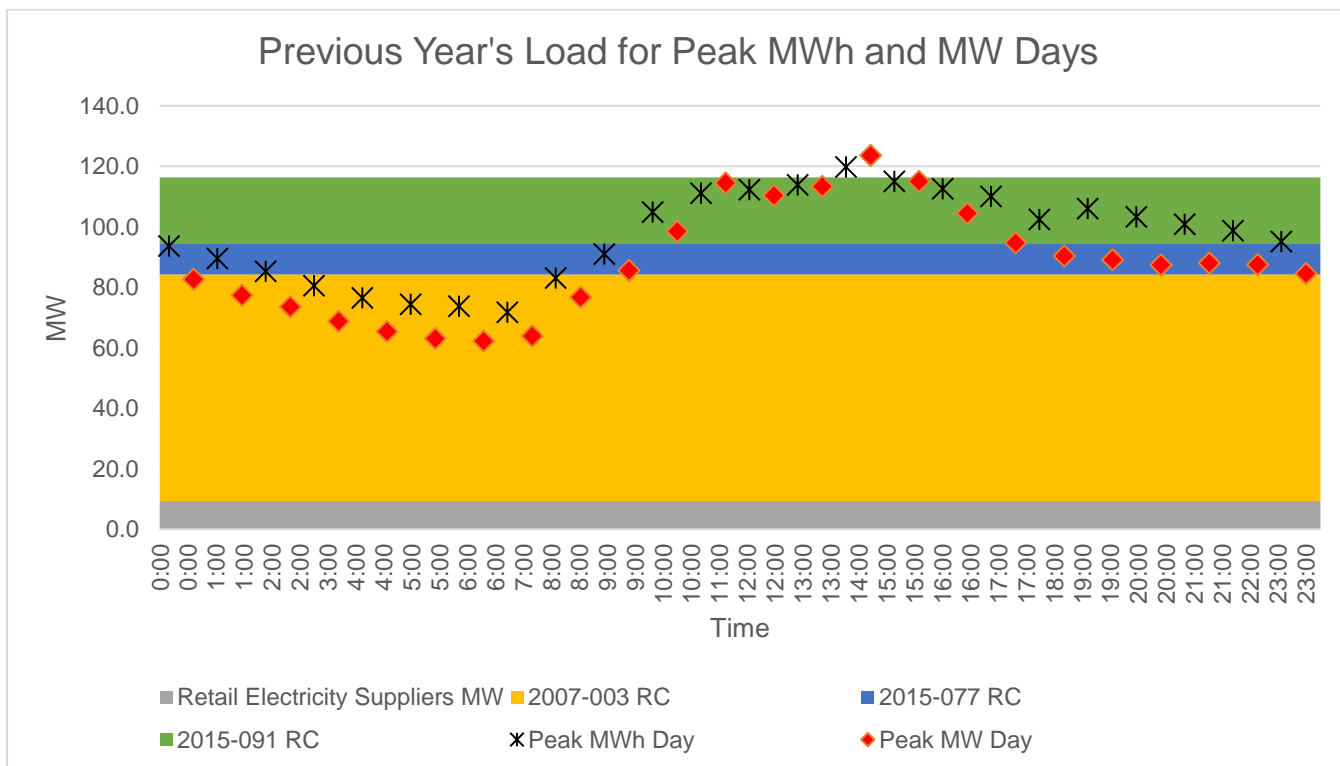


WESM Offtake started in year 2013. Offtake depends on the prevailing market price to ensure that AEC purchases in the least cost manner. For year 2020, AEC’s WESM offtake was 152,203 MWh or about 22% of its total energy requirements. In year 2019, it was 188,866 MWh or about 26% of AEC’s total energy requirements.

Previous Year's Load Profile

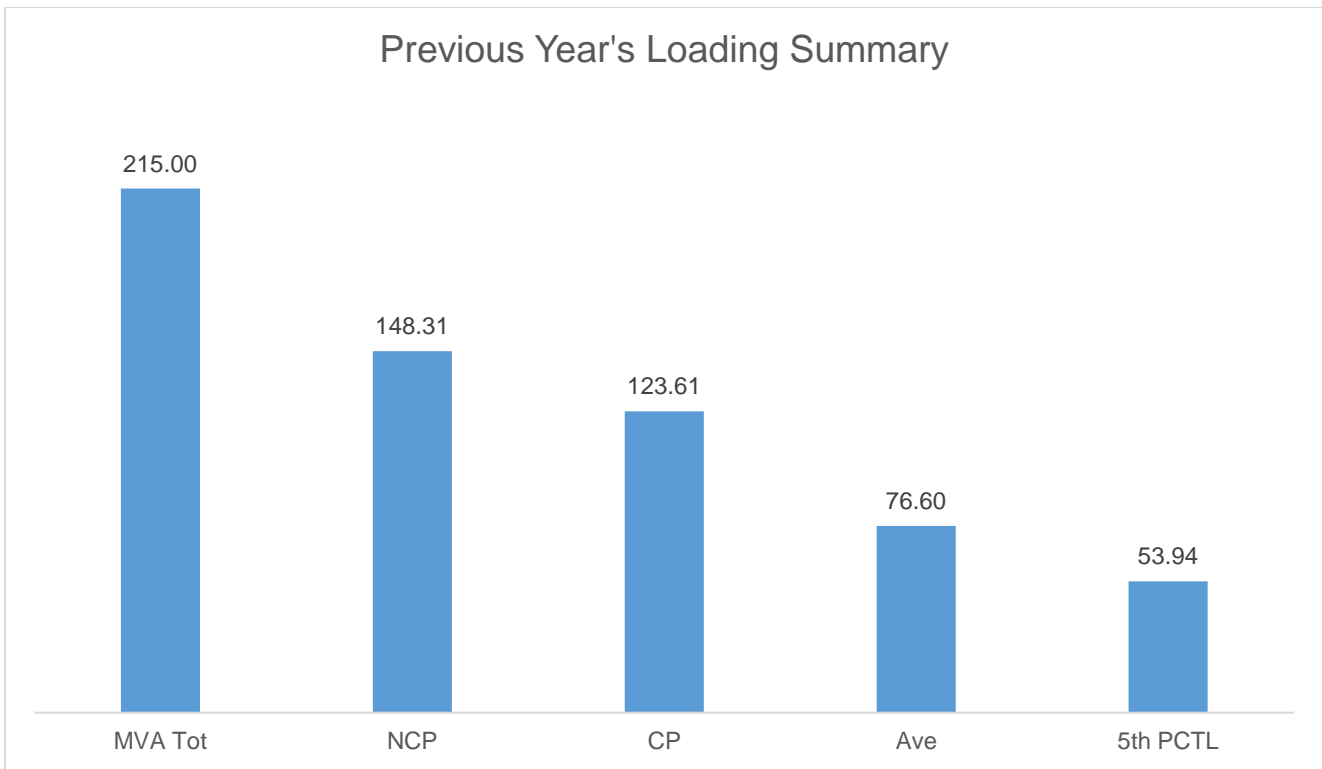


Based on the Load Duration Curve, the minimum aggregate substation load (5th Percentile) is 53.94 MW and the maximum aggregate substation load is 123.61 MW for the last historical year.



Peak MW occurred on September 14, 2020 due to increase in demand brought about by the reduction of quarantine restrictions. Peak daily MWh occurred on March 10, 2020 due mainly to weather (summertime) and was not anymore upended as Angeles City was placed under ECQ starting March 16, 2020. As shown in the Load Curves, the available supply is lower than the Peak Demand and compensated through the WESM.

Previous Year's Loading Summary



The Non-coincident Peak Demand is 148.31 MW, which is around 72% of the total substation capacity of 215 MVA at a power factor of 95.24%. The load factor or the ratio between the Average Load of 76.60 MW and the Coincident Peak Demand is 61.70% of. A safe estimate of the true minimum load is the fifth percentile load of 53.94 MW which is 43.64% of the Coincident Peak Demand.

Metering Point	Substation MVA	Substation Peak MW
MILENYO	35	26.290
CALIBU	40	30.396
PAMPANG	50	31.229
PETERSVILLE	40	38.514
NEPO CENTER	50	21.882

The substations loaded at above 70% are Milenyo and Petersville. This loading problem will be solved when Milenyo's upgrading from 35 to 50 MVA is consummated by the fourth quarter of 2021.

Forecasted Consumption Data

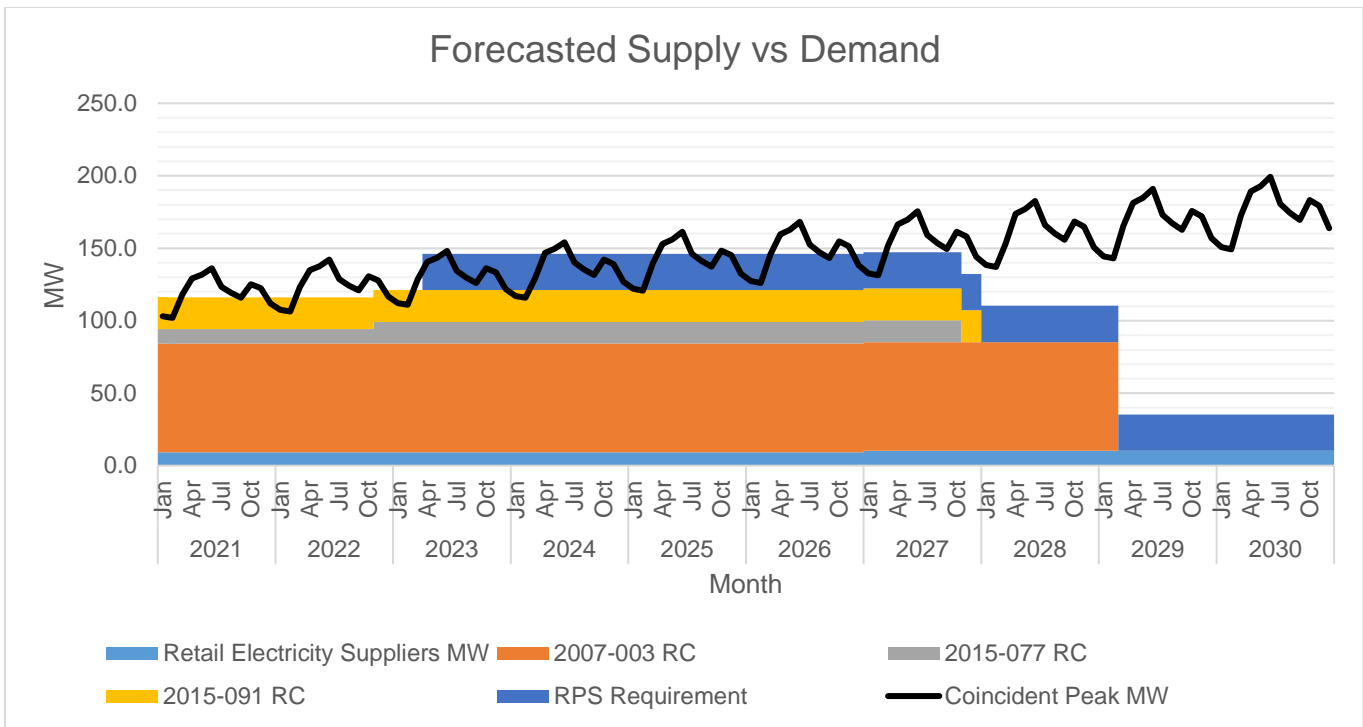
		Coincident Peak MW	Contracted MW	Pending MW	Planned MW	Retail Electricity Suppliers MW	Existing Contracting Level	Target Contracting Level	MW Surplus / Deficit
2021	Jan	103.017	107.00	0.00	0.000	9.27	114%	114%	13.25
	Feb	101.994	107.00	0.00	0.000	9.17	115%	115%	14.18
	Mar	118.007	107.00	0.00	0.000	9.22	98%	98%	-1.79
	Apr	129.243	107.00	0.00	0.000	9.22	89%	89%	-13.02
	May	131.778	107.00	0.00	0.000	9.22	87%	87%	-15.56
	Jun	136.206	107.00	0.00	0.000	9.22	84%	84%	-19.99
	Jul	123.451	107.00	0.00	0.000	9.22	94%	94%	-7.23
	Aug	119.144	107.00	0.00	0.000	9.22	97%	97%	-2.93
	Sep	115.931	107.00	0.00	0.000	9.22	100%	100%	0.29
	Oct	125.237	107.00	0.00	0.000	9.22	92%	92%	-9.02
	Nov	122.587	107.00	0.00	0.000	9.22	94%	94%	-6.37
	Dec	111.905	107.00	0.00	0.000	9.22	104%	104%	4.31
2022	Jan	107.47	107.00	0.00	0.000	9.22	109%	109%	8.75
	Feb	106.40	107.00	0.00	0.000	9.22	110%	110%	9.82
	Mar	123.11	107.00	0.00	0.000	9.22	94%	94%	-6.89
	Apr	134.83	107.00	0.00	0.000	9.22	85%	85%	-18.61
	May	137.47	107.00	0.00	0.000	9.22	83%	83%	-21.25
	Jun	142.09	107.00	0.00	0.000	9.22	81%	81%	-25.87
	Jul	128.79	107.00	0.00	0.000	9.22	89%	89%	-12.57
	Aug	124.29	107.00	0.00	0.000	9.22	93%	93%	-8.08
	Sep	120.94	107.00	0.00	0.000	9.22	96%	96%	-4.72
	Oct	130.65	107.00	0.00	0.000	9.22	88%	88%	-14.43
	Nov	127.88	112.00	0.00	0.000	9.22	94%	94%	-6.67
	Dec	116.74	112.00	0.00	0.000	9.22	104%	104%	4.48
2023	Jan	112.11	112.00	0.00	0.000	9.22	109%	109%	9.11
	Feb	111.00	112.00	0.00	0.000	9.22	110%	110%	10.22
	Mar	128.43	112.00	0.00	0.000	9.22	94%	94%	-7.21
	Apr	140.65	112.00	0.00	25.000	9.22	85%	104%	5.57
	May	143.41	112.00	0.00	25.000	9.22	83%	102%	2.81

	Jun	148.23	112.00	0.00	25.000	9.22	81%	99%	-2.01
	Jul	134.35	112.00	0.00	25.000	9.22	90%	109%	11.87
	Aug	129.66	112.00	0.00	25.000	9.22	93%	114%	16.56
	Sep	126.17	112.00	0.00	25.000	9.22	96%	117%	20.05
	Oct	136.29	112.00	0.00	25.000	9.22	88%	108%	9.92
	Nov	133.41	112.00	0.00	25.000	9.22	90%	110%	12.81
	Dec	121.78	112.00	0.00	25.000	9.22	99%	122%	24.43
2024	Jan	116.95	112.00	0.00	25.000	9.22	104%	127%	29.26
	Feb	115.79	112.00	0.00	25.000	9.22	105%	129%	30.42
	Mar	129.35	112.00	0.00	25.000	9.22	93%	114%	16.86
	Apr	146.73	112.00	0.00	25.000	9.22	81%	100%	-0.51
	May	149.61	112.00	0.00	25.000	9.22	80%	98%	-3.39
	Jun	154.21	112.00	0.00	25.000	9.22	77%	94%	-8.00
	Jul	140.15	112.00	0.00	25.000	9.22	86%	105%	6.06
	Aug	135.26	112.00	0.00	25.000	9.22	89%	109%	10.95
	Sep	131.62	112.00	0.00	25.000	9.22	92%	112%	14.60
	Oct	142.18	112.00	0.00	25.000	9.22	84%	103%	4.04
	Nov	139.17	112.00	0.00	25.000	9.22	86%	105%	7.04
	Dec	127.05	112.00	0.00	25.000	9.22	95%	116%	19.17
2025	Jan	122.01	112.00	0.00	25.000	9.22	99%	121%	24.21
	Feb	120.80	112.00	0.00	25.000	9.22	100%	123%	25.42
	Mar	139.76	112.00	0.00	25.000	9.22	86%	105%	6.45
	Apr	153.07	112.00	0.00	25.000	9.22	78%	95%	-6.85
	May	156.07	112.00	0.00	25.000	9.22	76%	93%	-9.85
	Jun	161.32	112.00	0.00	25.000	9.22	74%	90%	-15.10
	Jul	146.21	112.00	0.00	25.000	9.22	82%	100%	0.01
	Aug	141.11	112.00	0.00	25.000	9.22	85%	104%	5.11
	Sep	137.30	112.00	0.00	25.000	9.22	87%	107%	8.91
	Oct	148.32	112.00	0.00	25.000	9.22	81%	98%	-2.11
	Nov	145.19	112.00	0.00	25.000	9.22	82%	101%	1.03
	Dec	132.53	112.00	0.00	25.000	9.22	91%	111%	13.68
2026	Jan	127.28	112.00	0.00	25.000	9.22	95%	116%	18.94
	Feb	126.02	112.00	0.00	25.000	9.22	96%	117%	20.20
	Mar	145.80	112.00	0.00	25.000	9.22	82%	100%	0.42
	Apr	159.68	112.00	0.00	25.000	9.22	74%	91%	-13.47

	May	162.81	112.00	0.00	25.000	9.22	73%	89%	-16.60
	Jun	168.29	112.00	0.00	25.000	9.22	70%	86%	-22.07
	Jul	152.53	112.00	0.00	25.000	9.22	78%	96%	-6.31
	Aug	147.21	112.00	0.00	25.000	9.22	81%	99%	-0.99
	Sep	143.24	112.00	0.00	25.000	9.22	84%	102%	2.98
	Oct	154.73	112.00	0.00	25.000	9.22	77%	94%	-8.52
	Nov	151.46	112.00	0.00	25.000	9.22	79%	96%	-5.24
	Dec	138.26	112.00	0.00	25.000	9.22	87%	106%	7.96
2027	Jan	132.78	112.00	0.00	25.000	10.28	91%	112%	14.50
	Feb	131.46	112.00	0.00	25.000	10.28	92%	113%	15.81
	Mar	152.10	112.00	0.00	25.000	10.28	79%	97%	-4.82
	Apr	166.58	112.00	0.00	25.000	10.28	72%	88%	-19.31
	May	169.85	112.00	0.00	25.000	10.28	70%	86%	-22.57
	Jun	175.56	112.00	0.00	25.000	10.28	68%	83%	-28.28
	Jul	159.12	112.00	0.00	25.000	10.28	75%	92%	-11.84
	Aug	153.57	112.00	0.00	25.000	10.28	78%	96%	-6.29
	Sep	149.42	112.00	0.00	25.000	10.28	80%	98%	-2.15
	Oct	161.42	112.00	0.00	25.000	10.28	74%	91%	-14.14
	Nov	158.00	97.00	0.00	25.000	10.28	66%	83%	-25.73
	Dec	144.23	97.00	0.00	25.000	10.28	72%	91%	-11.96
2028	Jan	138.51	75.00	0.00	25.000	10.28	58%	78%	-28.24
	Feb	137.14	75.00	0.00	25.000	10.28	59%	79%	-26.86
	Mar	153.20	75.00	0.00	25.000	10.28	52%	70%	-42.92
	Apr	173.78	75.00	0.00	25.000	10.28	46%	61%	-63.50
	May	177.19	75.00	0.00	25.000	10.28	45%	60%	-66.91
	Jun	182.64	75.00	0.00	25.000	10.28	44%	58%	-72.36
	Jul	165.99	75.00	0.00	25.000	10.28	48%	64%	-55.71
	Aug	160.20	75.00	0.00	25.000	10.28	50%	67%	-49.92
	Sep	155.88	75.00	0.00	25.000	10.28	52%	69%	-45.60
	Oct	168.39	75.00	0.00	25.000	10.28	47%	63%	-58.12
	Nov	164.83	75.00	0.00	25.000	10.28	49%	65%	-54.55
	Dec	150.47	75.00	0.00	25.000	10.28	53%	71%	-40.19
2029	Jan	144.50	75.00	0.00	25.000	10.28	56%	75%	-34.22
	Feb	143.07	75.00	0.00	25.000	10.28	56%	75%	-32.79
	Mar	165.53	0.00	0.00	25.000	10.28	0%	16%	-130.25

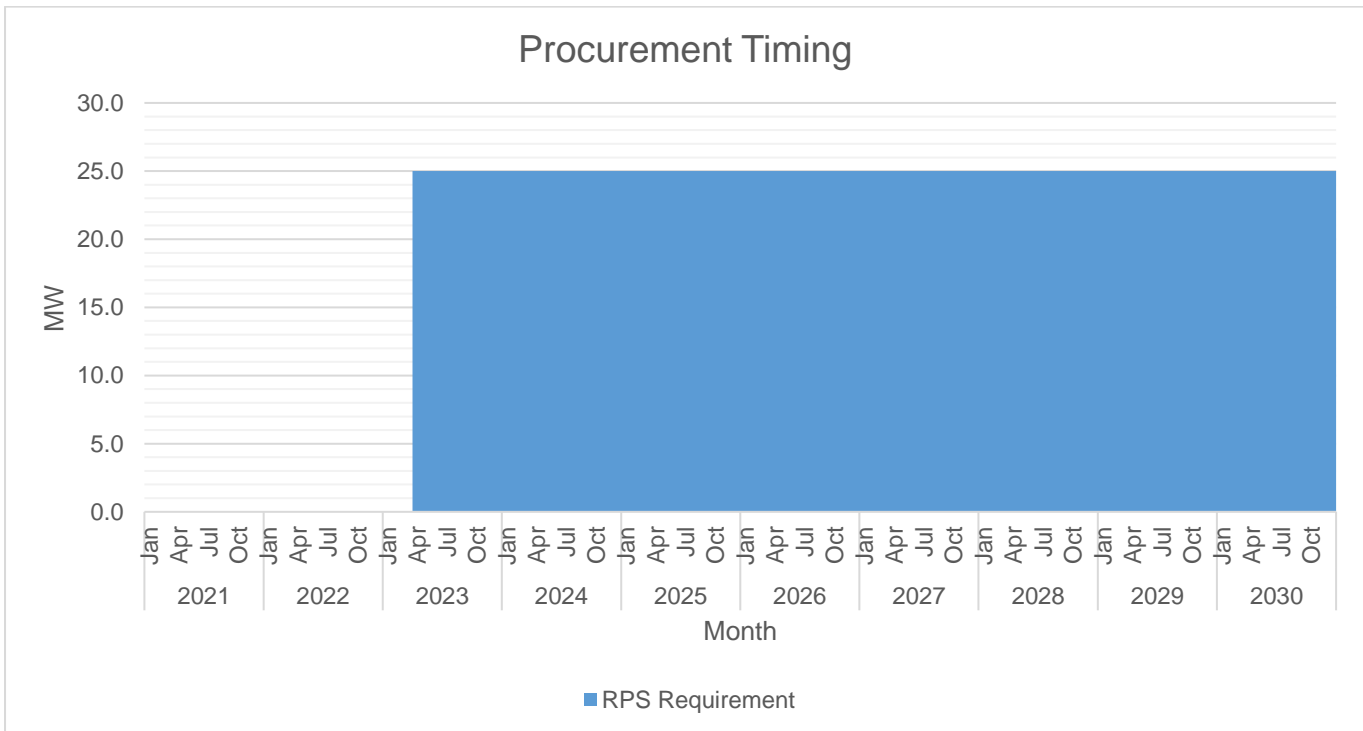
	Apr	181.29	0.00	0.00	25.000	10.28	0%	15%	-146.01
	May	184.84	0.00	0.00	25.000	10.28	0%	14%	-149.57
	Jun	191.05	0.00	0.00	25.000	10.28	0%	14%	-155.78
	Jul	173.16	0.00	0.00	25.000	10.28	0%	15%	-137.89
	Aug	167.12	0.00	0.00	25.000	10.28	0%	16%	-131.85
	Sep	162.61	0.00	0.00	25.000	10.28	0%	16%	-127.34
	Oct	175.67	0.00	0.00	25.000	10.28	0%	15%	-140.39
	Nov	171.95	0.00	0.00	25.000	10.28	0%	15%	-136.67
	Dec	156.97	0.00	0.00	25.000	10.28	0%	17%	-121.69
2030	Jan	150.74	0.00	0.00	25.000	10.28	0%	18%	-115.47
	Feb	149.25	0.00	0.00	25.000	10.28	0%	18%	-113.97
	Mar	172.68	0.00	0.00	25.000	10.28	0%	15%	-137.40
	Apr	189.12	0.00	0.00	25.000	10.28	0%	14%	-153.84
	May	192.83	0.00	0.00	25.000	10.28	0%	14%	-157.55
	Jun	199.31	0.00	0.00	25.000	10.28	0%	13%	-164.03
	Jul	180.64	0.00	0.00	25.000	10.28	0%	15%	-145.37
	Aug	174.34	0.00	0.00	25.000	10.28	0%	15%	-139.07
	Sep	169.64	0.00	0.00	25.000	10.28	0%	16%	-134.36
	Oct	183.26	0.00	0.00	25.000	10.28	0%	14%	-147.98
	Nov	179.38	0.00	0.00	25.000	10.28	0%	15%	-144.10
	Dec	163.75	0.00	0.00	25.000	10.28	0%	16%	-128.47

The Peak Demand was forecasted indirectly through regression analysis by using forecasted energy requirements and load factor. It was assumed to occur in the billing month of June. In general, Peak Demand is expected to grow at an average rate of 4.57% annually.

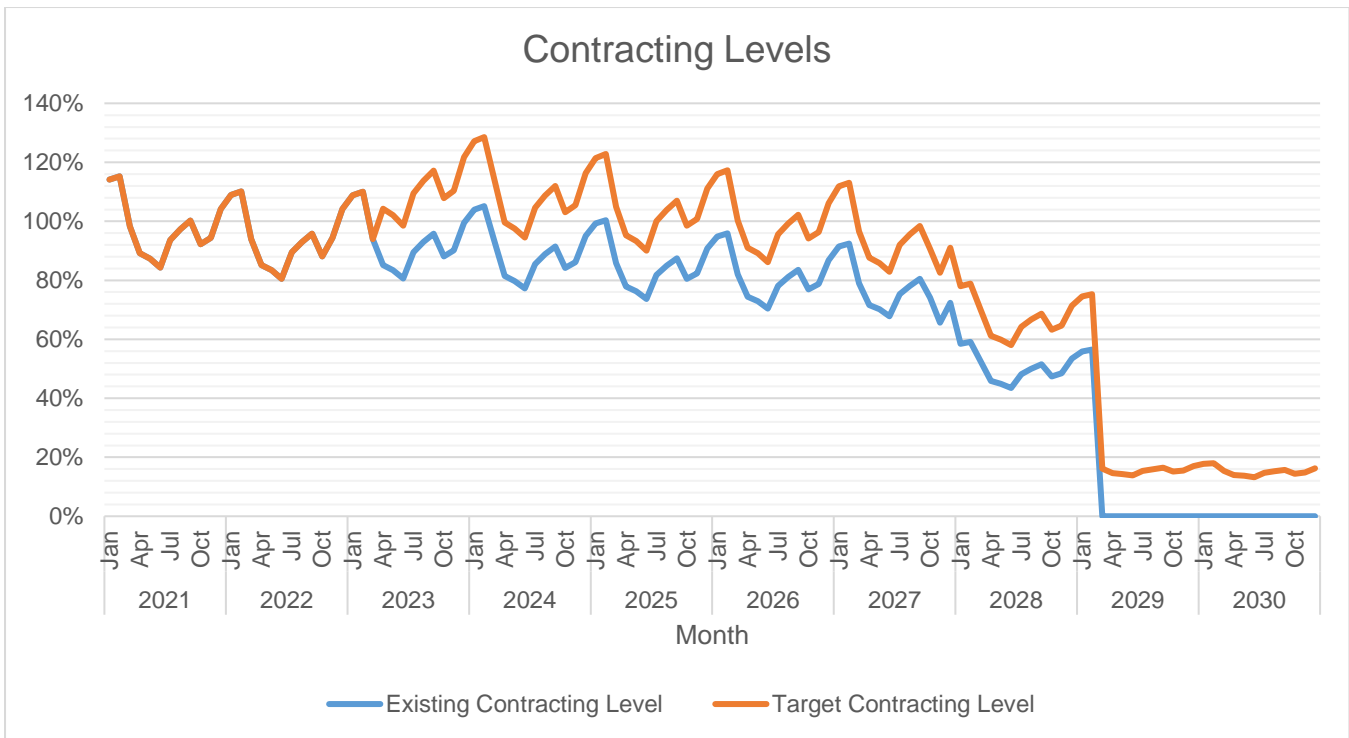


The available supply is generally below the Peak Demand as AEC sources through the WESM to fill the gap.

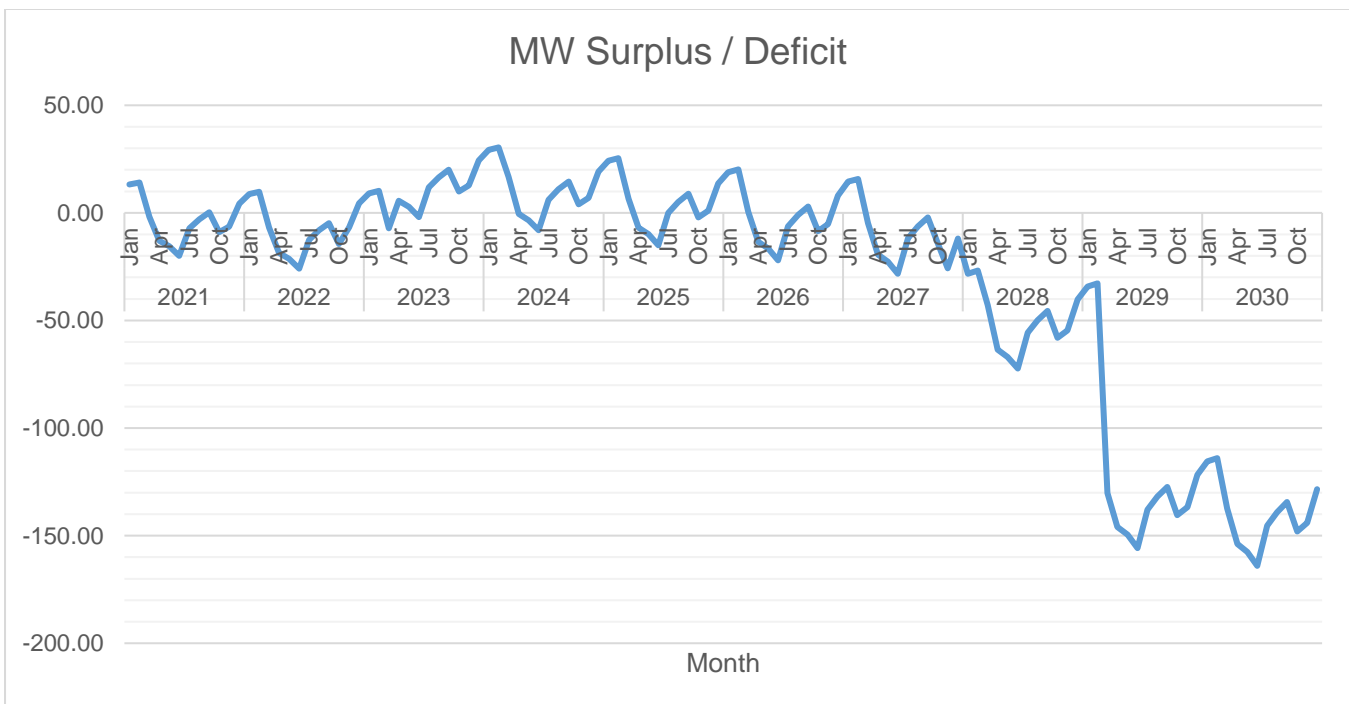
Of the available supply, the largest is 75 MW from GN Power. This is followed by 22 MW peaking demand from Angeles Power, Inc..



The first wave of supply procurement will be for 25 MW planned to be available by the billing month of January 2023.



Currently, there is under-contracting by about 3% even with the prevalent effects of the pandemic. System demand in 2020 decreased by only 3.35 MW from 2019 as residential demand increased to somewhat offset the decreases in commercial and industrial demands. The highest target contracting level is 129% in February 2024. The lowest target contracting level is 13% which is expected to occur in 2030.



Currently, there is under-contracting by 3.35 MW. The highest surplus is 30 MW which is expected to occur on the month of February 2024. The lowest deficit is 164 MW which is expected to occur on the month of June 2030.

		MWh Offtake	MWh Output	MWh System Loss	Transm'n Loss	System Loss
2021	Jan	52,836	49,259	3,578	0.00%	6.77%

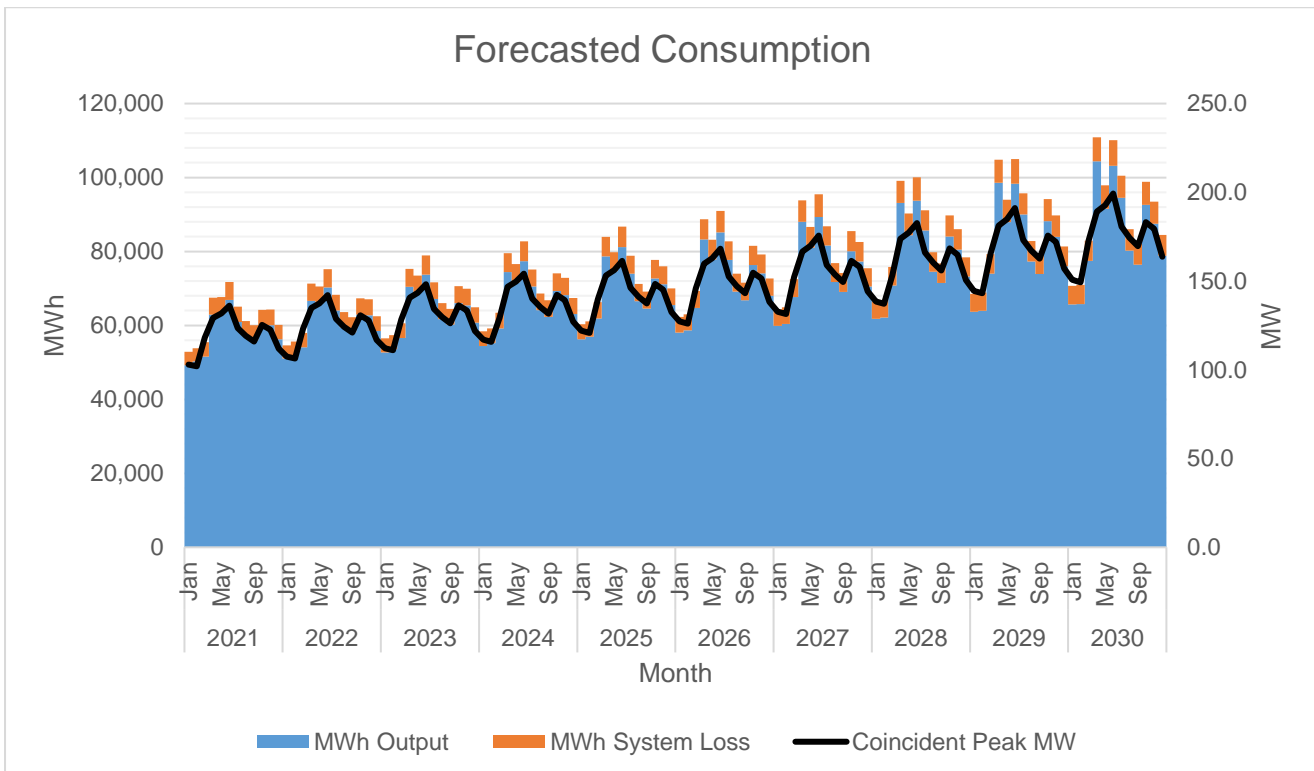
	Feb	53,855	50,237	3,618	0.00%	6.72%
	Mar	55,427	51,589	3,838	0.00%	6.92%
	Apr	67,514	62,922	4,592	0.00%	6.80%
	May	67,645	63,181	4,464	0.00%	6.60%
	Jun	71,778	66,888	4,890	0.00%	6.81%
	Jul	65,077	60,888	4,189	0.00%	6.44%
	Aug	61,171	57,091	4,080	0.00%	6.67%
	Sep	60,040	56,003	4,037	0.00%	6.72%
	Oct	64,243	59,867	4,376	0.00%	6.81%
	Nov	64,325	60,077	4,247	0.00%	6.60%
	Dec	60,156	56,213	3,943	0.00%	6.55%
2022	Jan	54,641	51,020	3,621	0.00%	6.63%
	Feb	55,604	51,942	3,662	0.00%	6.59%
	Mar	57,963	54,079	3,884	0.00%	6.70%
	Apr	71,271	66,623	4,647	0.00%	6.52%
	May	70,508	65,990	4,518	0.00%	6.41%
	Jun	75,248	70,299	4,949	0.00%	6.58%
	Jul	68,264	64,025	4,240	0.00%	6.21%
	Aug	63,566	59,437	4,129	0.00%	6.50%
	Sep	62,221	58,136	4,085	0.00%	6.57%
	Oct	67,367	62,938	4,429	0.00%	6.57%
	Nov	67,063	62,764	4,299	0.00%	6.41%
	Dec	62,498	58,508	3,991	0.00%	6.39%
2023	Jan	56,490	52,712	3,777	0.00%	6.69%
	Feb	57,388	53,568	3,820	0.00%	6.66%
	Mar	60,617	56,566	4,052	0.00%	6.68%
	Apr	75,263	70,415	4,848	0.00%	6.44%
	May	73,483	68,769	4,714	0.00%	6.41%
	Jun	78,902	73,739	5,163	0.00%	6.54%
	Jul	71,615	67,192	4,423	0.00%	6.18%
	Aug	66,043	61,736	4,307	0.00%	6.52%
	Sep	64,464	60,202	4,262	0.00%	6.61%
	Oct	70,655	66,034	4,620	0.00%	6.54%
	Nov	69,914	65,430	4,484	0.00%	6.41%
	Dec	64,919	60,756	4,163	0.00%	6.41%
2024	Jan	58,385	54,444	3,941	0.00%	6.75%
	Feb	59,211	55,226	3,986	0.00%	6.73%
	Mar	63,392	59,165	4,227	0.00%	6.67%
	Apr	79,494	74,437	5,057	0.00%	6.36%
	May	76,577	71,660	4,917	0.00%	6.42%
	Jun	82,737	77,351	5,386	0.00%	6.51%
	Jul	75,138	70,524	4,614	0.00%	6.14%
	Aug	68,609	64,115	4,494	0.00%	6.55%
	Sep	66,776	62,330	4,446	0.00%	6.66%
	Oct	74,108	69,288	4,820	0.00%	6.50%
	Nov	72,886	68,207	4,678	0.00%	6.42%
	Dec	67,426	63,084	4,343	0.00%	6.44%
2025	Jan	60,328	56,217	4,111	0.00%	6.81%
	Feb	61,073	56,916	4,158	0.00%	6.81%
	Mar	66,291	61,882	4,409	0.00%	6.65%
	Apr	83,981	78,705	5,276	0.00%	6.28%

	May	79,795	74,665	5,130	0.00%	6.43%
	Jun	86,762	81,144	5,618	0.00%	6.48%
	Jul	78,843	74,030	4,813	0.00%	6.10%
	Aug	71,265	66,577	4,688	0.00%	6.58%
	Sep	69,157	64,519	4,638	0.00%	6.71%
	Oct	77,734	72,706	5,028	0.00%	6.47%
	Nov	75,982	71,101	4,880	0.00%	6.42%
	Dec	70,023	65,493	4,530	0.00%	6.47%
2026	Jan	62,318	58,029	4,289	0.00%	6.88%
	Feb	62,974	58,637	4,337	0.00%	6.89%
	Mar	69,322	64,722	4,600	0.00%	6.64%
	Apr	88,739	83,235	5,504	0.00%	6.20%
	May	83,142	77,791	5,351	0.00%	6.44%
	Jun	90,989	85,127	5,861	0.00%	6.44%
	Jul	82,740	77,719	5,021	0.00%	6.07%
	Aug	74,014	69,124	4,890	0.00%	6.61%
	Sep	71,609	66,770	4,838	0.00%	6.76%
	Oct	81,544	76,298	5,246	0.00%	6.43%
	Nov	79,207	74,116	5,091	0.00%	6.43%
	Dec	72,712	67,986	4,726	0.00%	6.50%
2027	Jan	64,355	59,881	4,474	0.00%	6.95%
	Feb	64,912	60,388	4,525	0.00%	6.97%
	Mar	72,489	67,690	4,799	0.00%	6.62%
	Apr	93,786	88,045	5,742	0.00%	6.12%
	May	86,622	81,039	5,583	0.00%	6.44%
	Jun	95,426	89,312	6,114	0.00%	6.41%
	Jul	86,839	81,601	5,238	0.00%	6.03%
	Aug	76,858	71,757	5,102	0.00%	6.64%
	Sep	74,132	69,085	5,047	0.00%	6.81%
	Oct	85,546	80,074	5,472	0.00%	6.40%
	Nov	82,568	77,257	5,311	0.00%	6.43%
	Dec	75,495	70,565	4,930	0.00%	6.53%
2028	Jan	66,439	61,771	4,667	0.00%	7.02%
	Feb	66,887	62,167	4,720	0.00%	7.06%
	Mar	75,798	70,792	5,006	0.00%	6.60%
	Apr	99,142	93,152	5,990	0.00%	6.04%
	May	90,240	84,416	5,824	0.00%	6.45%
	Jun	100,085	93,706	6,379	0.00%	6.37%
	Jul	91,151	85,687	5,464	0.00%	5.99%
	Aug	79,801	74,479	5,322	0.00%	6.67%
	Sep	76,728	71,462	5,266	0.00%	6.86%
	Oct	89,750	84,042	5,709	0.00%	6.36%
	Nov	86,068	80,527	5,541	0.00%	6.44%
	Dec	78,375	73,231	5,143	0.00%	6.56%
2029	Jan	68,568	63,700	4,869	0.00%	7.10%
	Feb	68,897	63,973	4,924	0.00%	7.15%
	Mar	79,257	74,034	5,222	0.00%	6.59%
	Apr	104,826	98,577	6,249	0.00%	5.96%
	May	94,001	87,925	6,075	0.00%	6.46%
	Jun	104,977	98,323	6,654	0.00%	6.34%
	Jul	95,688	89,988	5,700	0.00%	5.96%

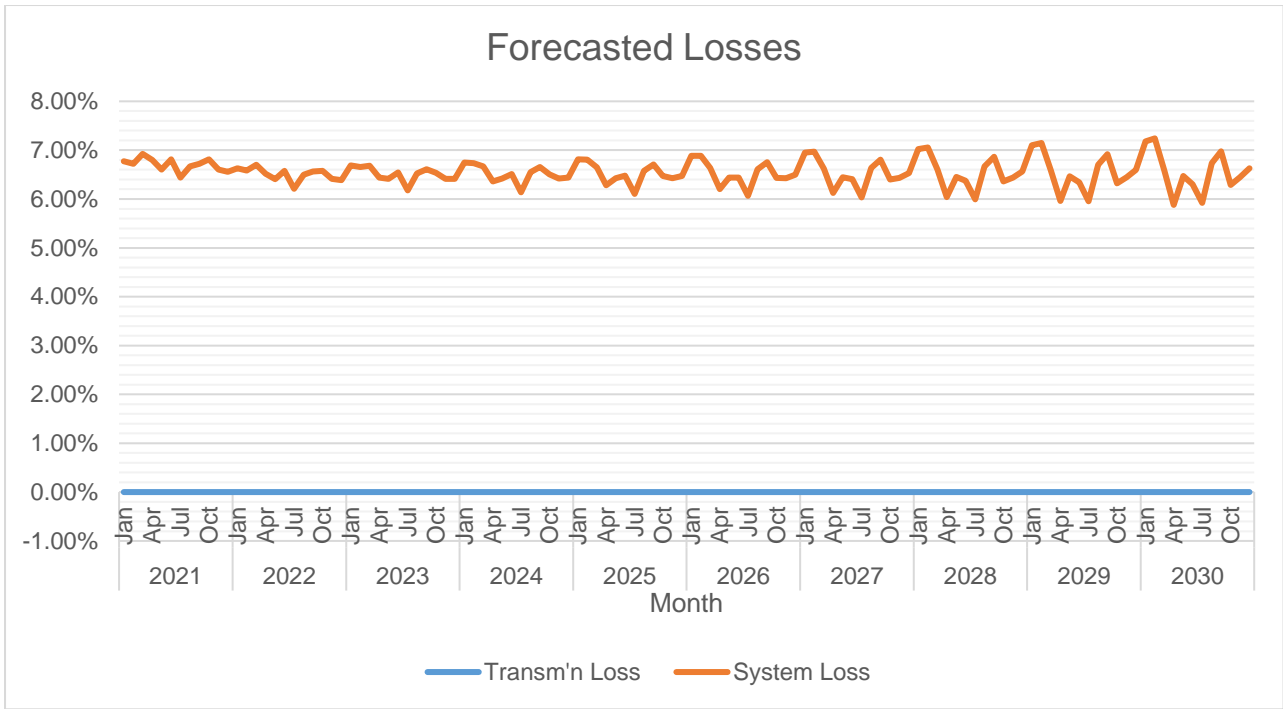
	Aug	82,843	77,291	5,552	0.00%	6.70%
	Sep	79,396	73,903	5,493	0.00%	6.92%
	Oct	94,168	88,213	5,955	0.00%	6.32%
	Nov	89,714	83,934	5,780	0.00%	6.44%
	Dec	81,353	75,987	5,366	0.00%	6.60%
2030	Jan	70,744	65,665	5,079	0.00%	7.18%
	Feb	70,941	65,804	5,137	0.00%	7.24%
	Mar	82,870	77,422	5,448	0.00%	6.57%
	Apr	110,860	104,341	6,519	0.00%	5.88%
	May	97,909	91,571	6,338	0.00%	6.47%
	Jun	110,115	103,173	6,942	0.00%	6.30%
	Jul	100,463	94,516	5,947	0.00%	5.92%
	Aug	85,987	80,196	5,792	0.00%	6.74%
	Sep	82,137	76,406	5,730	0.00%	6.98%
	Oct	98,810	92,598	6,213	0.00%	6.29%
	Nov	93,511	87,481	6,030	0.00%	6.45%
	Dec	84,433	78,835	5,597	0.00%	6.63%

MWh Offtake was forecasted using 9-year historical data as reference (2011-2019). 2020 was excluded due to the abnormal data brought about by the effects of the COVID 19 pandemic. The assumed load factor is projected to be that of the previous historical year (2020).

System Loss was determined through actual metering. Based on the results, the Distribution System can adequately convey electricity to customers.



MWh Output was expected to grow at a rate of 4.32% annually.

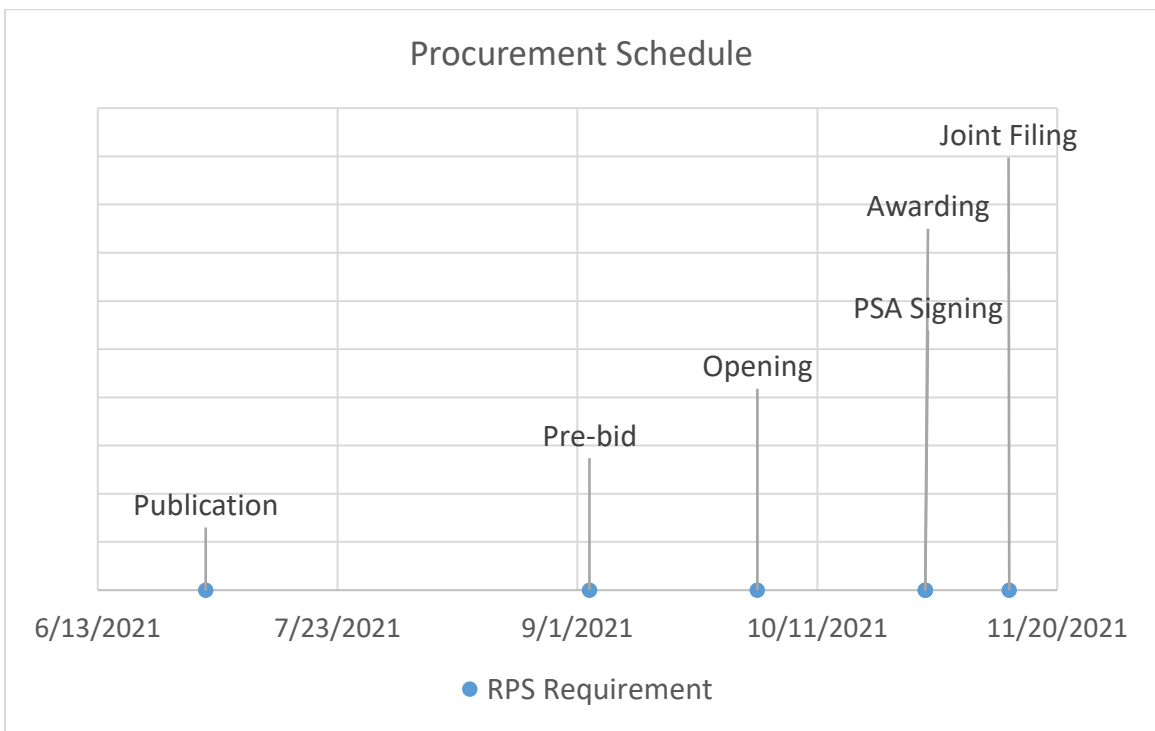


System Loss is expected to range from 6.50% to 6.70%.

Power Supply

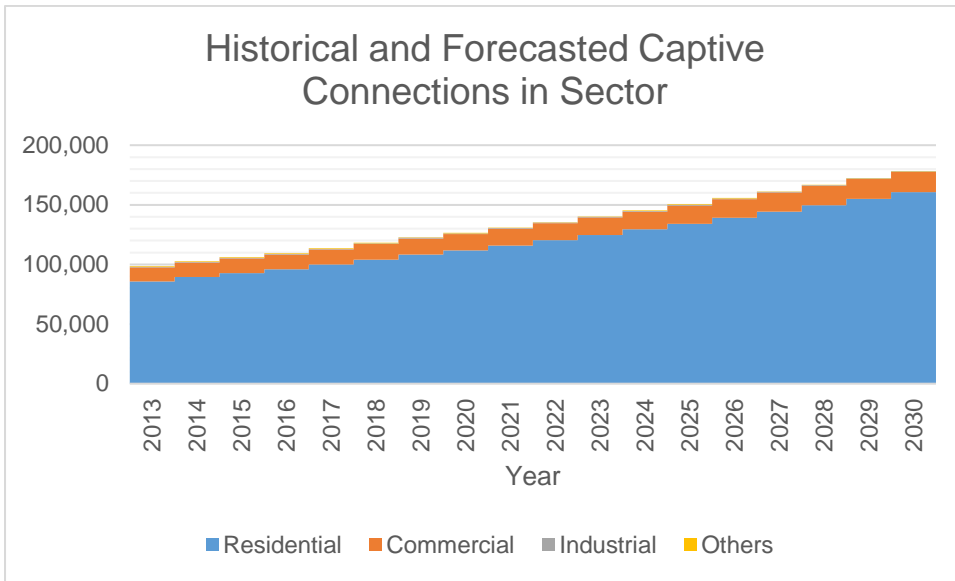
Case No.	Type	GenCo	Minimum MW	Minimum MWh/yr	PSA Start	PSA End
2007-003 RC	Base	GN Power Mariveles Coal Plant Ltd.	37.61	361,613	2/26/2014	2/25/2029
2015-077 RC	Base	Anda Power Corporation	10.00	87,600	10/26/2016	10/25/2026
2015-091 RC	Peaking	Angeles Power, Inc.	22	0	12/26/2016	12/25/2026

	RPS Requirement
Type	Peaking
Minimum MW	25.00
Minimum MWh/yr	35,697
PSA Start	12/26/2022
PSA End	12/25/2032
Publication	7/2021
Pre-bid	9/03/2021
Opening	10/01/2021
Awarding	10/29/2021
PSA Signing	10/29/2021
Joint Filing	11/12/2021



For the procurement of 25 MW of supply which is planned to be available on December 26, 2022, the first publication or launch of CSP will be in July 2021. Joint filing is planned on November 12, 2021, in accordance with DOE’s 2018 CSP Policy.

Captive Customer Connections



The number of residential connections is expected to grow at a rate of 3.69% annually.