



Power Supply Procurement Plan 2020

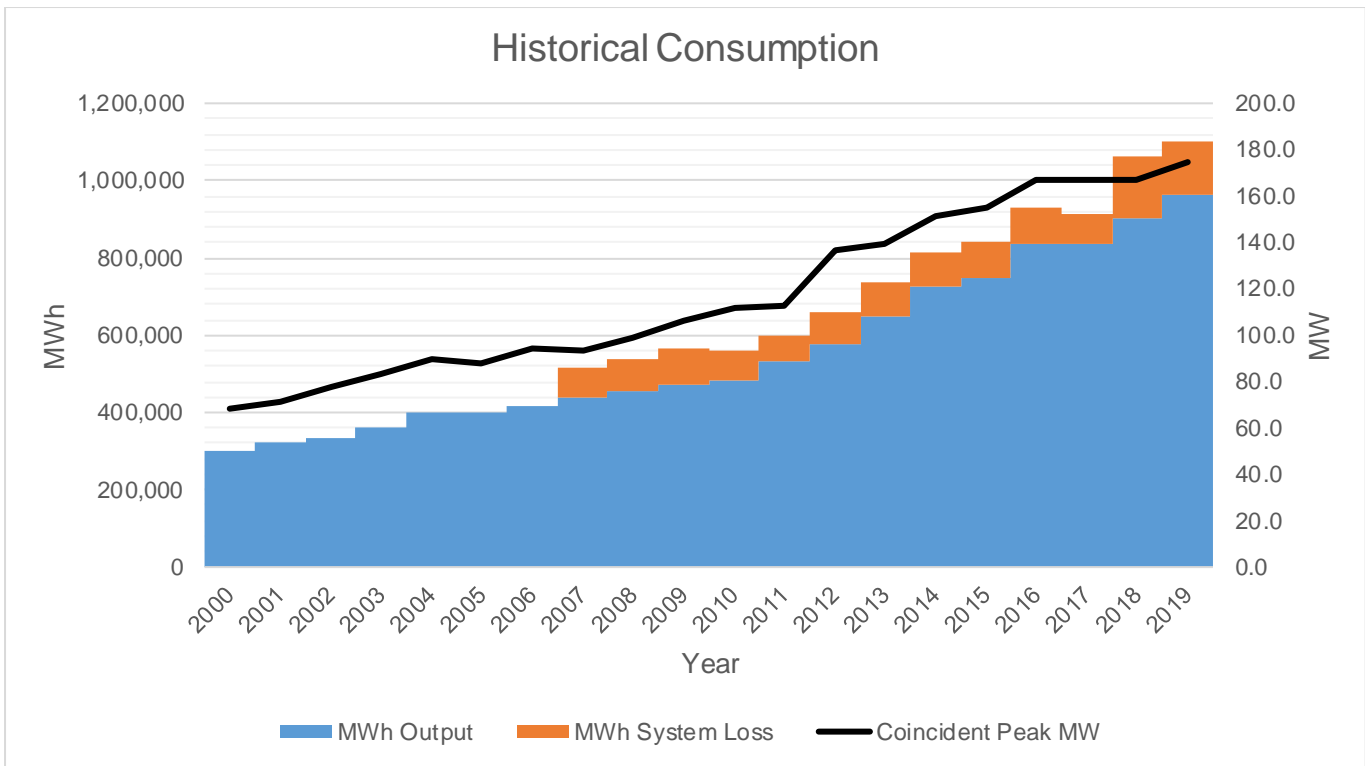
SOUTH COTABATO II ELECTRIC COOPERATIVE

Historical Consumption Data

	Coincident Peak MW	MWh Offtake	WESM	MWh Input	MWh Output	MWh System Loss	Load Factor	Discrepancy	Transm'n Loss	System Loss
2000	68.30	377,844	0	377,844	299,343	0	63%	-20.78%	0.00%	0.00%
2001	71.73	407,239	0	407,239	322,695	0	65%	-20.76%	0.00%	0.00%
2002	77.72	425,412	0	425,412	332,188	0	62%	-21.91%	0.00%	0.00%
2003	83.62	453,362	0	453,362	363,646	0	62%	-19.79%	0.00%	0.00%
2004	89.94	488,425	0	488,425	399,165	0	62%	-18.28%	0.00%	0.00%
2005	87.95	497,716	0	497,716	401,277	0	65%	-19.38%	0.00%	0.00%
2006	94.48	510,856	0	510,856	414,368	0	62%	-18.89%	0.00%	0.00%
2007	92.91	540,193	0	540,193	439,406	76,065	66%	-4.58%	0.00%	14.08%
2008	99.08	562,341	0	562,341	456,451	81,156	65%	-4.40%	0.00%	14.43%
2009	106.24	593,326	0	593,326	474,433	89,926	64%	-4.88%	0.00%	15.16%
2010	111.56	597,581	0	597,581	480,701	78,333	61%	-6.45%	0.00%	13.11%
2011	112.74	629,280	0	629,280	530,179	68,002	64%	-4.94%	0.00%	10.81%
2012	136.64	688,430	0	688,430	579,102	78,597	58%	-4.46%	0.00%	11.42%
2013	139.79	767,752	0	767,752	647,686	89,422	63%	-3.99%	0.00%	11.65%
2014	151.32	816,330	0	816,330	727,105	89,467	62%	0.03%	0.00%	10.96%
2015	155.25	839,799	0	839,799	747,992	91,902	62%	0.01%	0.00%	10.94%
2016	166.64	905,234	0	905,234	838,826	89,742	62%	2.58%	0.00%	9.91%
2017	167.29	910,836	0	910,836	838,817	72,019	62%	0.00%	0.00%	7.91%
2018	167.38	1,039,193	0	1,039,193	904,784	156,814	71%	2.16%	0.00%	15.09%
2019	174.65	1,094,395	0	1,094,395	965,529	136,367	72%	0.69%	0.00%	12.46%

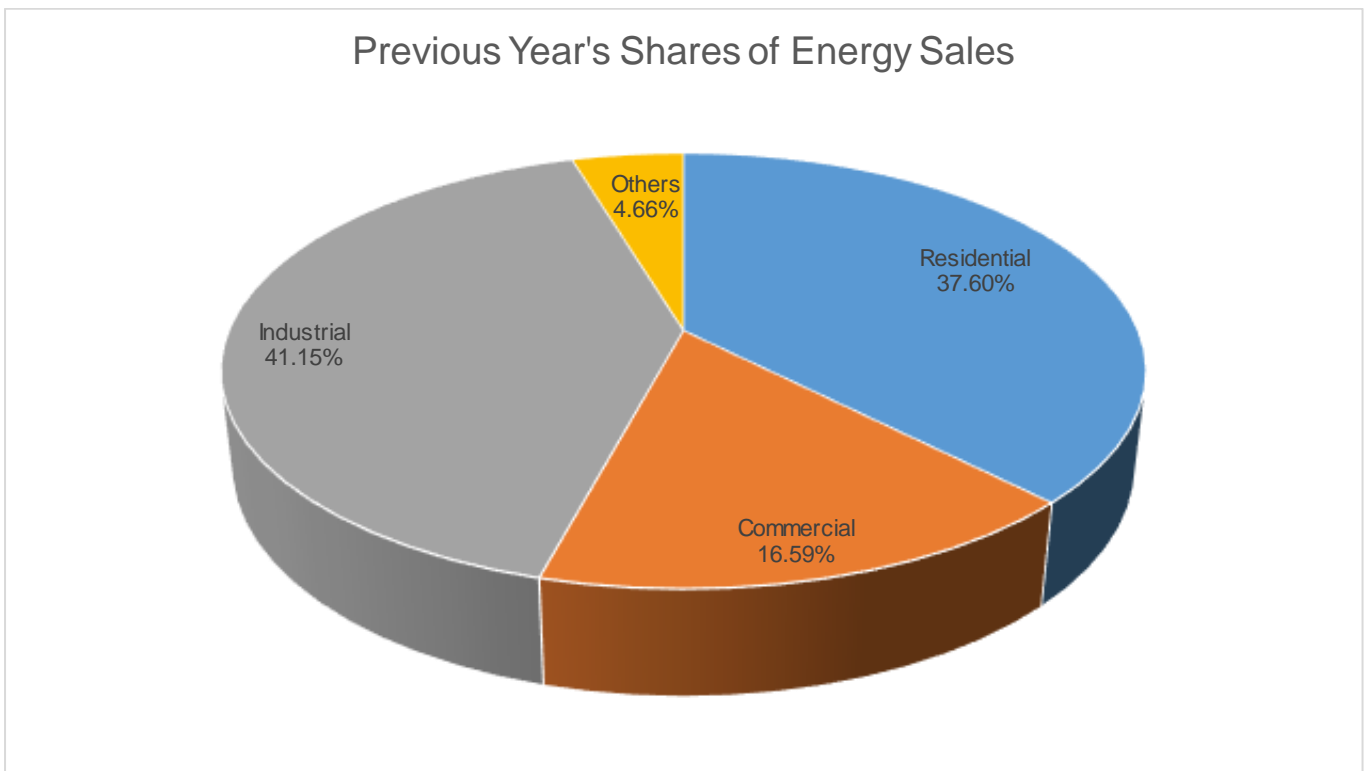
Peak Demand increased from 167.38 MW in 2018 to 174.65 MW in 2019 at a rate of 4.34% due to rapid increase in residential, commercial and industrial customers.

MWh Offtake increased from 1,039,078 MWh in 2018 to 1,094,395 MWh in 2019 at a rate of 5.32% due to rapid growth and development. Within the same period, Load Factor ranged from 69% to 70%. There was an abrupt change in consumption on 2019 due to the “Build, build, and build Program” of the National Government.



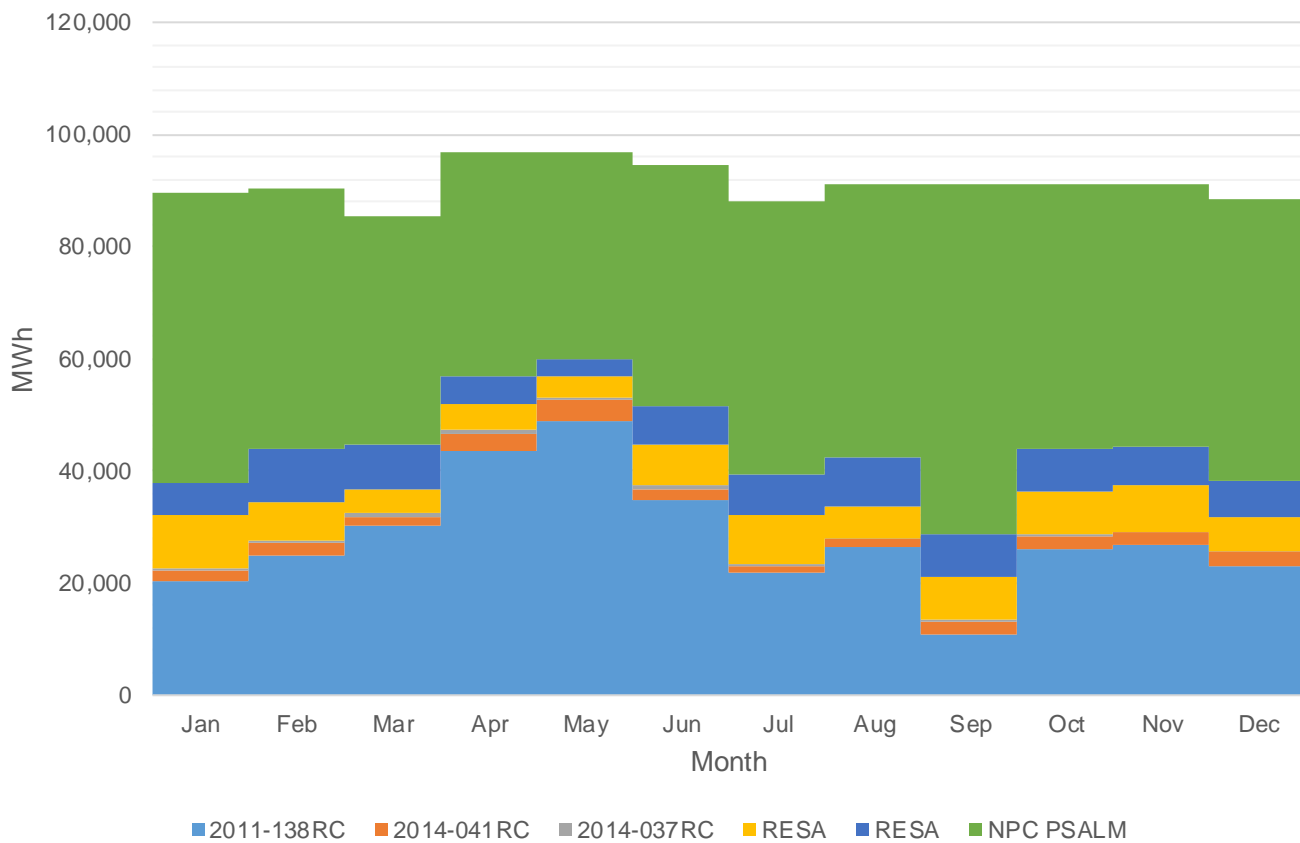
MWh Output increased from year 2018 to year 2019 at a rate of 5.23%, while MWh System Loss decreased at a rate of 2.68% within the same period.

System Loss peaked at 15.42% on year 2018 because of billing reconciliation from suppliers.



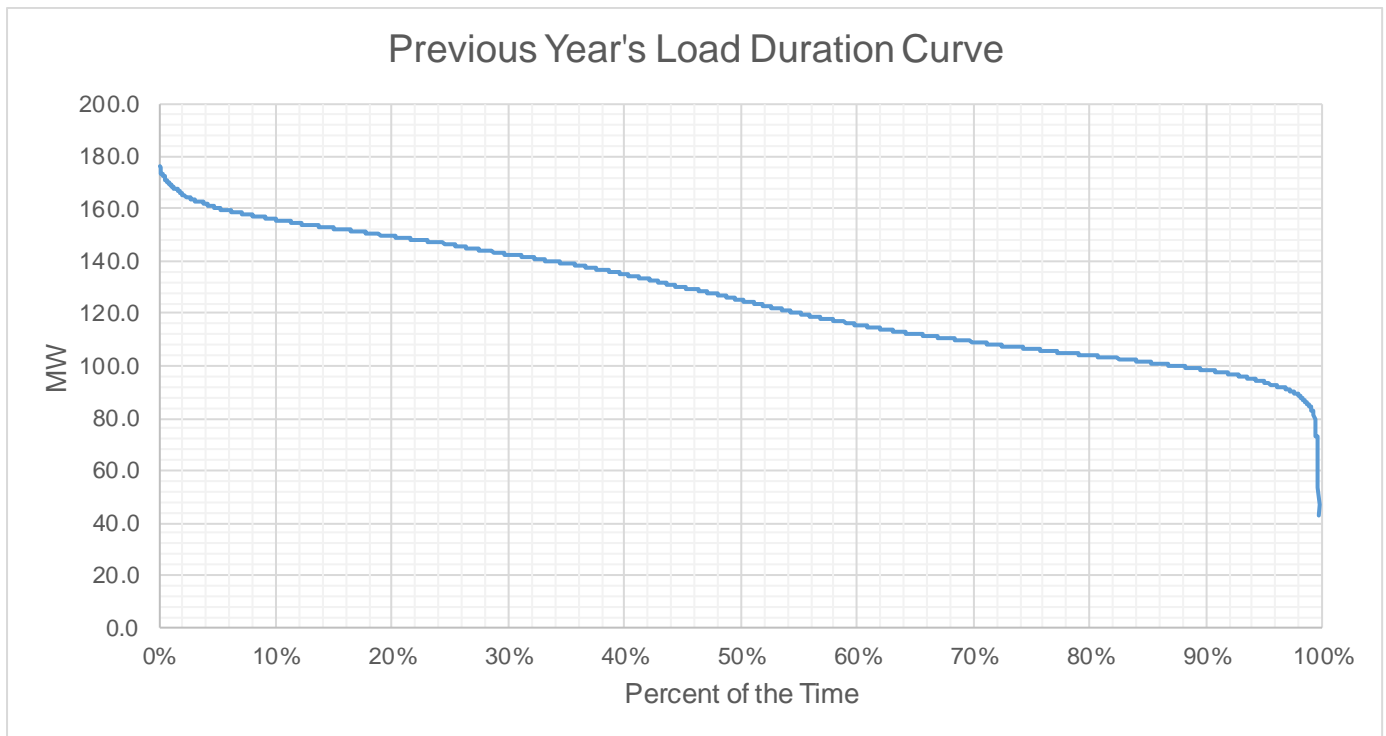
Industrial customers account for the bulk of energy sales at 40.94% despite of the number of connections. In contrast, residential customers accounted for only 37.82% of energy sales of the high number of connections.

MWh Offtake for Last Historical Year

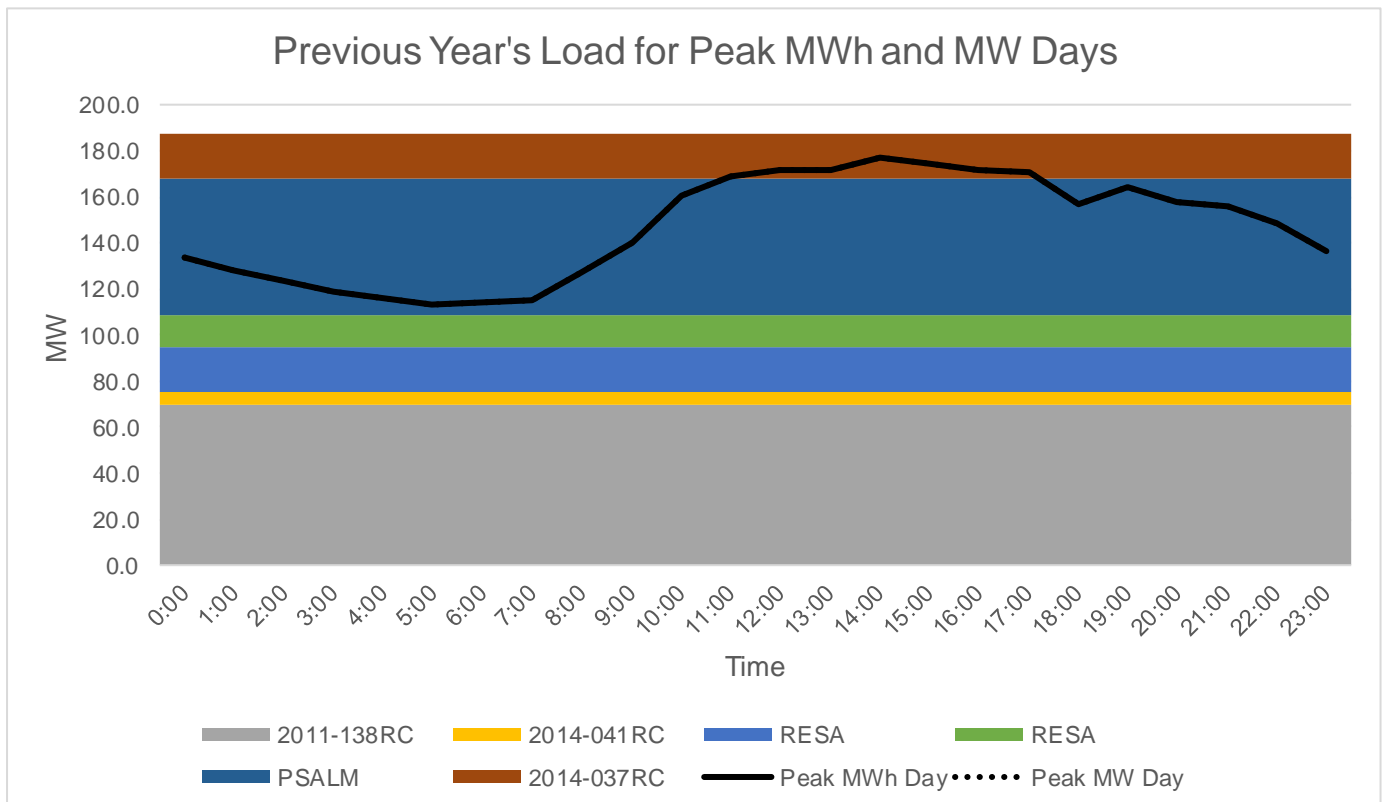


For SOCOTECO II, the total Off-take for the last historical year is lower than the quantity stipulated in the PSA which means that there is enough supply to meet the growing power requirements.

Previous Year's Load Profile



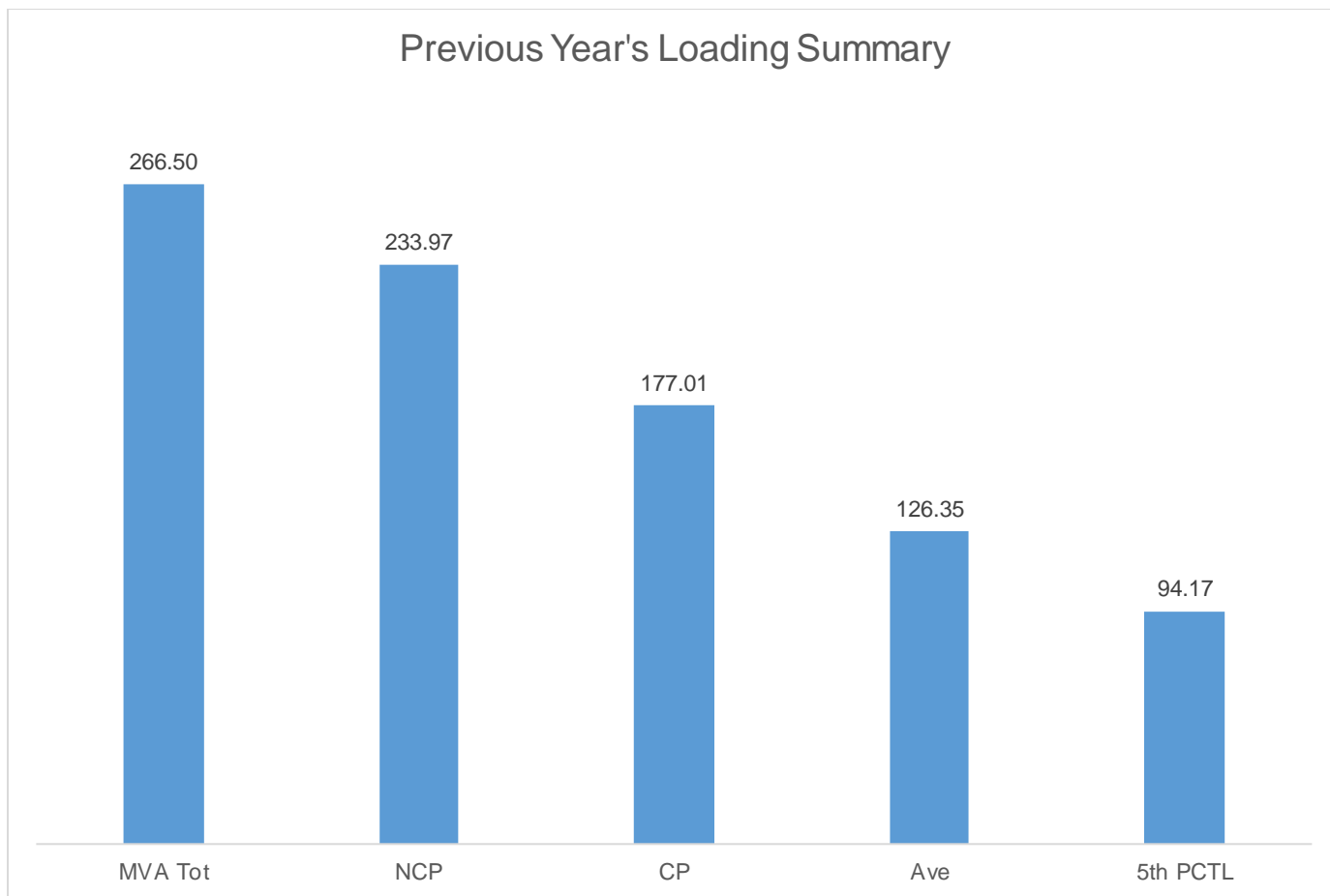
Based on the Load Duration Curve, the minimum load is 92 MW during normal conditions and the maximum load is 174.65 MW for the last historical year.



Peak Demand occurs at 2 pm due to simultaneous use of power in residential, commercial, and industrial consumers plus the significant usage of air conditioning units.

As shown in the Load Curves, the available supply is higher than the Peak Demand which means that supply is sufficient.

Previous Year's Loading Summary



The Non-coincident Peak Demand is 233.97 MW, which is around 87.79% of the total substation capacity of 266.5 MVA at a power factor of 97.65%. A safe estimate of the true minimum load is the fifth percentile load of 94.17 MW which is 40.24% of the Non-coincident Peak Demand.

Metering Point	Substation MVA	Substation Peak MW
DOLE	20	10.767
SARI	20	10.917
POLOMOLOK	20	15.455
LIGAYA	10	10.321
GLAN	5	4.036
TUPI	5	3.548
SEGUIL LINE 2	36.5	31.965
KCC	10	5.926
MAIN	35	30.231
SEGUIL LINE 1	105	110.801

The substations loaded at above 70% are Ligaya and Calumpang Substation. This loading problem will be solved by adding power substations for adequate capacity.

Forecasted Consumption Data

		Coincident Peak MW	Contracted MW	Pending MW	Planned MW	Retail Electricity Suppliers MW	Existing Contracting Level	Target Contracting Level	MW Surplus / Deficit
2020	Jan	178.72	187.77	0.00	0.000		105%	105%	9.04
	Feb	180.00	189.73	0.00	0.000		105%	105%	9.73
	Mar	181.29	191.38	0.00	0.000		106%	106%	10.09
	Apr	182.57	193.01	0.00	0.000		106%	106%	10.45
	May	183.85	192.66	0.00	0.000		105%	105%	8.81
	Jun	185.34	192.49	0.00	0.000		104%	104%	7.15
	Jul	186.41	191.04	0.00	0.000		102%	102%	4.63
	Aug	186.62	190.81	0.00	0.000		102%	102%	4.19
	Sep	187.90	191.39	0.00	0.000		102%	102%	3.49
	Oct	188.86	191.19	0.00	0.000		101%	101%	2.33
	Nov	188.86	193.90	0.00	0.000		103%	103%	5.05
	Dec	189.07	192.01	0.00	0.000		102%	102%	2.94
2021	Jan	185.79	128.00	65.00	0.000		69%	104%	7.21
	Feb	187.12	128.00	65.00	0.000		68%	103%	5.88
	Mar	188.45	128.00	65.00	0.000		68%	102%	4.55
	Apr	189.78	128.00	65.00	0.000		67%	102%	3.22
	May	191.12	128.00	65.00	0.000		67%	101%	1.88
	Jun	192.66	128.00	65.00	0.000		66%	100%	0.34
	Jul	193.78	128.00	65.00	0.000		66%	100%	-0.78
	Aug	193.99	128.00	65.00	0.000		66%	99%	-0.99
	Sep	195.33	128.00	65.00	0.000		66%	99%	-2.33
	Oct	196.32	128.00	65.00	0.000		65%	98%	-3.32
	Nov	196.32	128.00	65.00	0.000		65%	98%	-3.32
	Dec	196.54	128.00	65.00	0.000		65%	98%	-3.54
2022	Jan	192.85	94.50	65.00	40.000		49%	103%	6.65
	Feb	194.24	94.50	65.00	40.000		49%	103%	5.26
	Mar	195.62	94.50	65.00	40.000		48%	102%	3.88
	Apr	197.00	94.50	65.00	40.000		48%	101%	2.50
	May	198.38	94.50	65.00	40.000		48%	101%	1.12

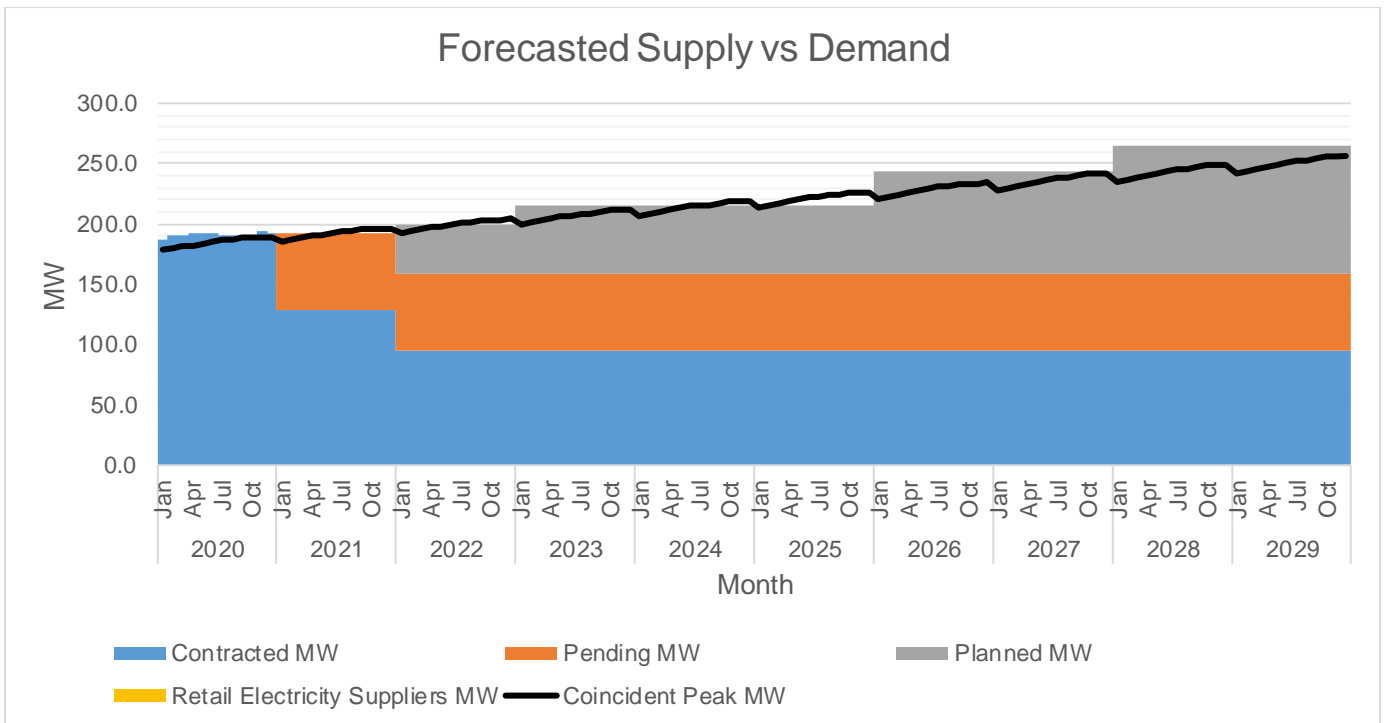
		Coincident Peak MW	Contracted MW	Pending MW	Planned MW	Retail Electricity Suppliers MW	Existing Contracting Level	Target Contracting Level	MW Surplus / Deficit
	Jun	199.99	94.50	65.00	40.000		47%	100%	-0.49
	Jul	201.15	94.50	65.00	40.000		47%	99%	-1.65
	Aug	201.37	94.50	65.00	40.000		47%	99%	-1.87
	Sep	202.76	94.50	65.00	40.000		47%	98%	-3.26
	Oct	203.79	94.50	65.00	40.000		46%	98%	-4.29
	Nov	203.79	94.50	65.00	40.000		46%	98%	-4.29
	Dec	204.01	94.50	65.00	40.000		46%	98%	-4.51
2023	Jan	199.92	94.50	65.00	55.000		47%	107%	14.58
	Feb	201.35	94.50	65.00	55.000		47%	107%	13.15
	Mar	202.78	94.50	65.00	55.000		47%	106%	11.72
	Apr	204.22	94.50	65.00	55.000		46%	105%	10.28
	May	205.65	94.50	65.00	55.000		46%	104%	8.85
	Jun	207.32	94.50	65.00	55.000		46%	103%	7.18
	Jul	208.52	94.50	65.00	55.000		45%	103%	5.98
	Aug	208.75	94.50	65.00	55.000		45%	103%	5.75
	Sep	210.18	94.50	65.00	55.000		45%	102%	4.32
	Oct	211.26	94.50	65.00	55.000		45%	102%	3.24
	Nov	211.26	94.50	65.00	55.000		45%	102%	3.24
	Dec	211.49	94.50	65.00	55.000		45%	101%	3.01
2024	Jan	206.98	94.50	65.00	55.000		46%	104%	7.52
	Feb	208.47	94.50	65.00	55.000		45%	103%	6.03
	Mar	209.95	94.50	65.00	55.000		45%	102%	4.55
	Apr	211.44	94.50	65.00	55.000		45%	101%	3.06
	May	212.92	94.50	65.00	55.000		44%	101%	1.58
	Jun	214.64	94.50	65.00	55.000		44%	100%	-0.14
	Jul	215.89	94.50	65.00	55.000		44%	99%	-1.39
	Aug	216.13	94.50	65.00	55.000		44%	99%	-1.63
	Sep	217.61	94.50	65.00	55.000		43%	99%	-3.11
	Oct	218.72	94.50	65.00	55.000		43%	98%	-4.22
	Nov	218.72	94.50	65.00	55.000		43%	98%	-4.22
	Dec	218.96	94.50	65.00	55.000		43%	98%	-4.46

		Coincident Peak MW	Contracted MW	Pending MW	Planned MW	Retail Electricity Suppliers MW	Existing Contracting Level	Target Contracting Level	MW Surplus / Deficit
2025	Jan	214.05	94.50	65.00	55.000		44%	100%	0.45
	Feb	215.58	94.50	65.00	55.000		44%	99%	-1.08
	Mar	217.12	94.50	65.00	55.000		44%	99%	-2.62
	Apr	218.65	94.50	65.00	55.000		43%	98%	-4.15
	May	220.19	94.50	65.00	55.000		43%	97%	-5.69
	Jun	221.97	94.50	65.00	55.000		43%	97%	-7.47
	Jul	223.26	94.50	65.00	55.000		42%	96%	-8.76
	Aug	223.50	94.50	65.00	55.000		42%	96%	-9.00
	Sep	225.04	94.50	65.00	55.000		42%	95%	-10.54
	Oct	226.19	94.50	65.00	55.000		42%	95%	-11.69
	Nov	226.19	94.50	65.00	55.000		42%	95%	-11.69
	Dec	226.43	94.50	65.00	55.000		42%	95%	-11.93
2026	Jan	221.11	94.50	65.00	85.000		43%	111%	23.39
	Feb	222.70	94.50	65.00	85.000		42%	110%	21.80
	Mar	224.28	94.50	65.00	85.000		42%	109%	20.22
	Apr	225.87	94.50	65.00	85.000		42%	108%	18.63
	May	227.45	94.50	65.00	85.000		42%	107%	17.05
	Jun	229.29	94.50	65.00	85.000		41%	107%	15.21
	Jul	230.63	94.50	65.00	85.000		41%	106%	13.87
	Aug	230.88	94.50	65.00	85.000		41%	106%	13.62
	Sep	232.47	94.50	65.00	85.000		41%	105%	12.03
	Oct	233.65	94.50	65.00	85.000		40%	105%	10.85
	Nov	233.65	94.50	65.00	85.000		40%	105%	10.85
	Dec	233.91	94.50	65.00	85.000		40%	105%	10.59
2027	Jan	228.18	94.50	65.00	85.000		41%	107%	16.32
	Feb	229.81	94.50	65.00	85.000		41%	106%	14.69
	Mar	231.45	94.50	65.00	85.000		41%	106%	13.05
	Apr	233.09	94.50	65.00	85.000		41%	105%	11.41
	May	234.72	94.50	65.00	85.000		40%	104%	9.78
	Jun	236.62	94.50	65.00	85.000		40%	103%	7.88
	Jul	238.00	94.50	65.00	85.000		40%	103%	6.50

		Coincident Peak MW	Contracted MW	Pending MW	Planned MW	Retail Electricity Suppliers MW	Existing Contracting Level	Target Contracting Level	MW Surplus / Deficit
	Aug	238.26	94.50	65.00	85.000		40%	103%	6.24
	Sep	239.89	94.50	65.00	85.000		39%	102%	4.61
	Oct	241.12	94.50	65.00	85.000		39%	101%	3.38
	Nov	241.12	94.50	65.00	85.000		39%	101%	3.38
	Dec	241.38	94.50	65.00	85.000		39%	101%	3.12
2028	Jan	235.24	94.50	65.00	105.000		40%	112%	29.26
	Feb	236.93	94.50	65.00	105.000		40%	112%	27.57
	Mar	238.62	94.50	65.00	105.000		40%	111%	25.88
	Apr	240.30	94.50	65.00	105.000		39%	110%	24.20
	May	241.99	94.50	65.00	105.000		39%	109%	22.51
	Jun	243.95	94.50	65.00	105.000		39%	108%	20.55
	Jul	245.36	94.50	65.00	105.000		39%	108%	19.14
	Aug	245.63	94.50	65.00	105.000		38%	108%	18.87
	Sep	247.32	94.50	65.00	105.000		38%	107%	17.18
	Oct	248.58	94.50	65.00	105.000		38%	106%	15.92
	Nov	248.58	94.50	65.00	105.000		38%	106%	15.92
	Dec	248.86	94.50	65.00	105.000		38%	106%	15.64
2029	Jan	242.31	94.50	65.00	105.000		39%	109%	22.19
	Feb	244.04	94.50	65.00	105.000		39%	108%	20.46
	Mar	245.78	94.50	65.00	105.000		38%	108%	18.72
	Apr	247.52	94.50	65.00	105.000		38%	107%	16.98
	May	249.26	94.50	65.00	105.000		38%	106%	15.24
	Jun	251.27	94.50	65.00	105.000		38%	105%	13.23
	Jul	252.73	94.50	65.00	105.000		37%	105%	11.77
	Aug	253.01	94.50	65.00	105.000		37%	105%	11.49
	Sep	254.75	94.50	65.00	105.000		37%	104%	9.75
	Oct	256.05	94.50	65.00	105.000		37%	103%	8.45
	Nov	256.05	94.50	65.00	105.000		37%	103%	8.45
	Dec	256.33	94.50	65.00	105.000		37%	103%	8.17

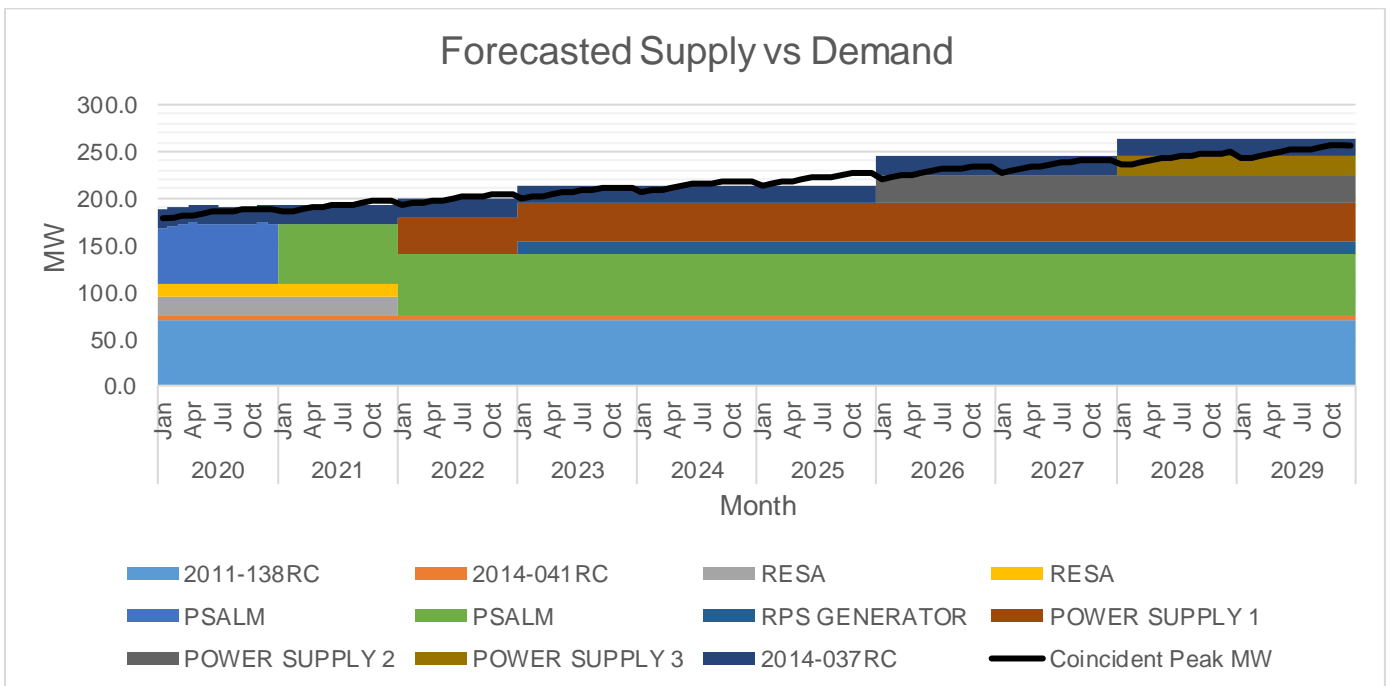
The Peak Demand is forecasted using time series analysis and is assumed to occur in the month of December due to high demand on power. Monthly Peak Demand is at its lowest in the month of January.

In general, Peak Demand is expected to grow at a rate of 5.8% annually.

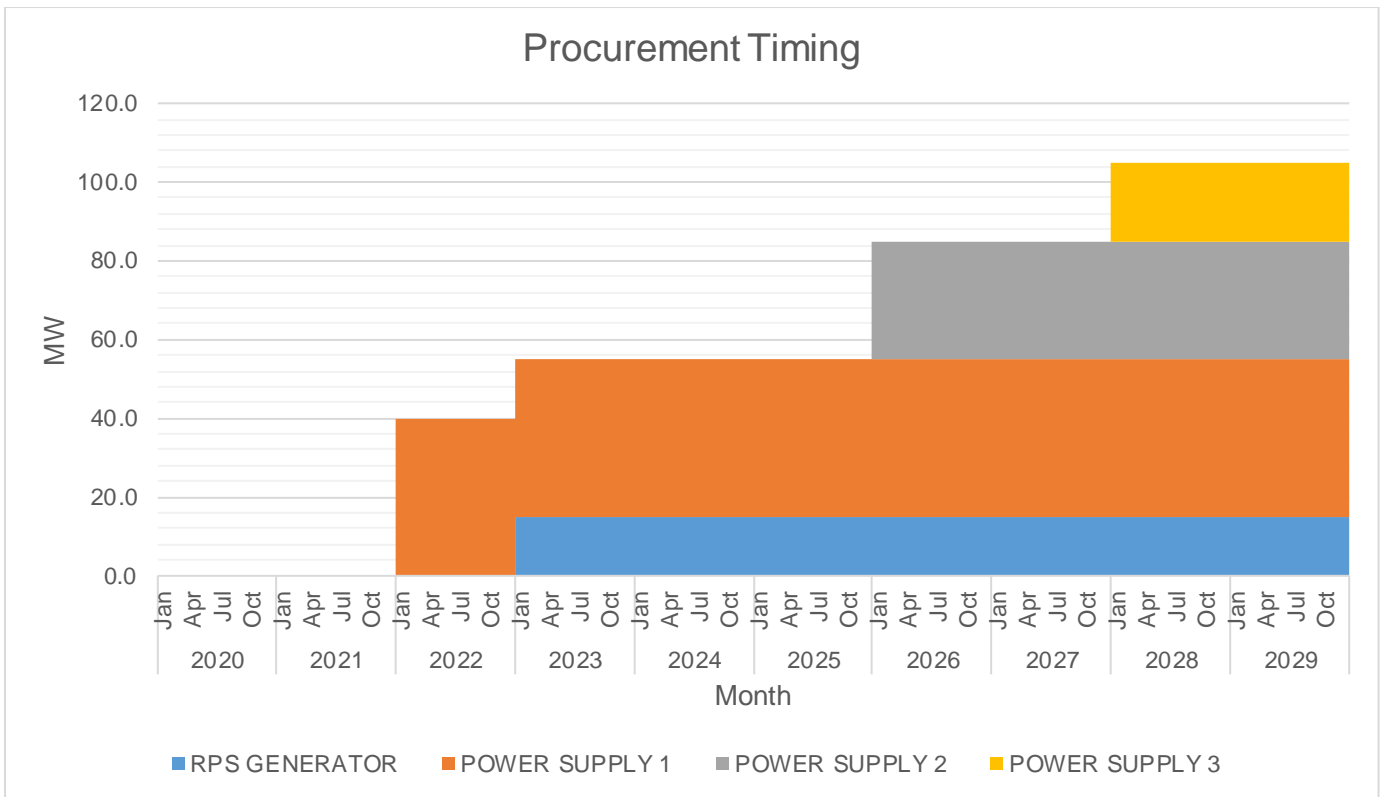


The available supply is generally above the Peak Demand. We can notice that by the year 2023 the demand will eventually exceed the supply. This happened when the contract for NPC-PSALM ended on December 2020. Thus, the cooperative seeks to renew contract and hopefully to get supply from NPC-PSALM by January 2021.

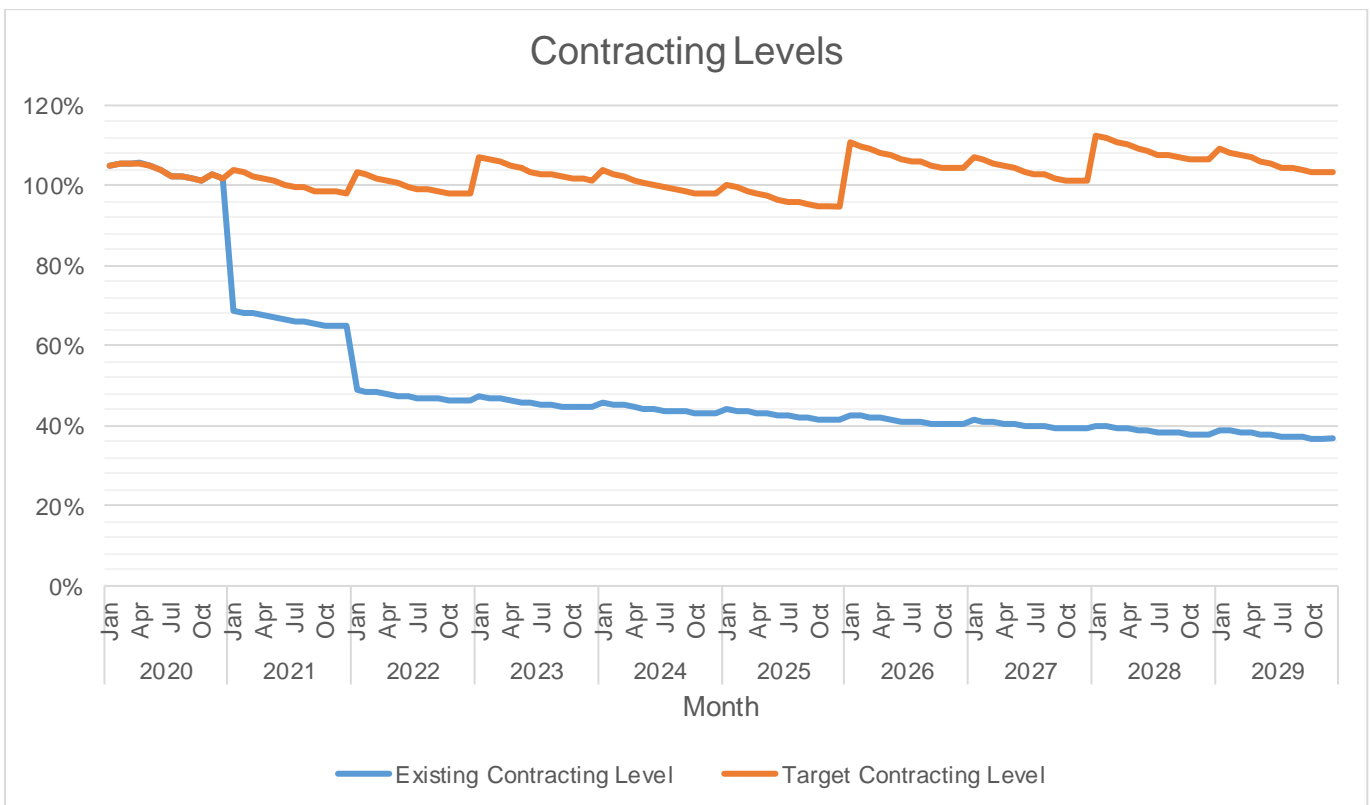
Other contracted capacity like RESA will end when WESM enters. By 2024 onwards, the consideration in sourcing supply from WESM will be SOCOTECO II's option to ensure adequate supply.



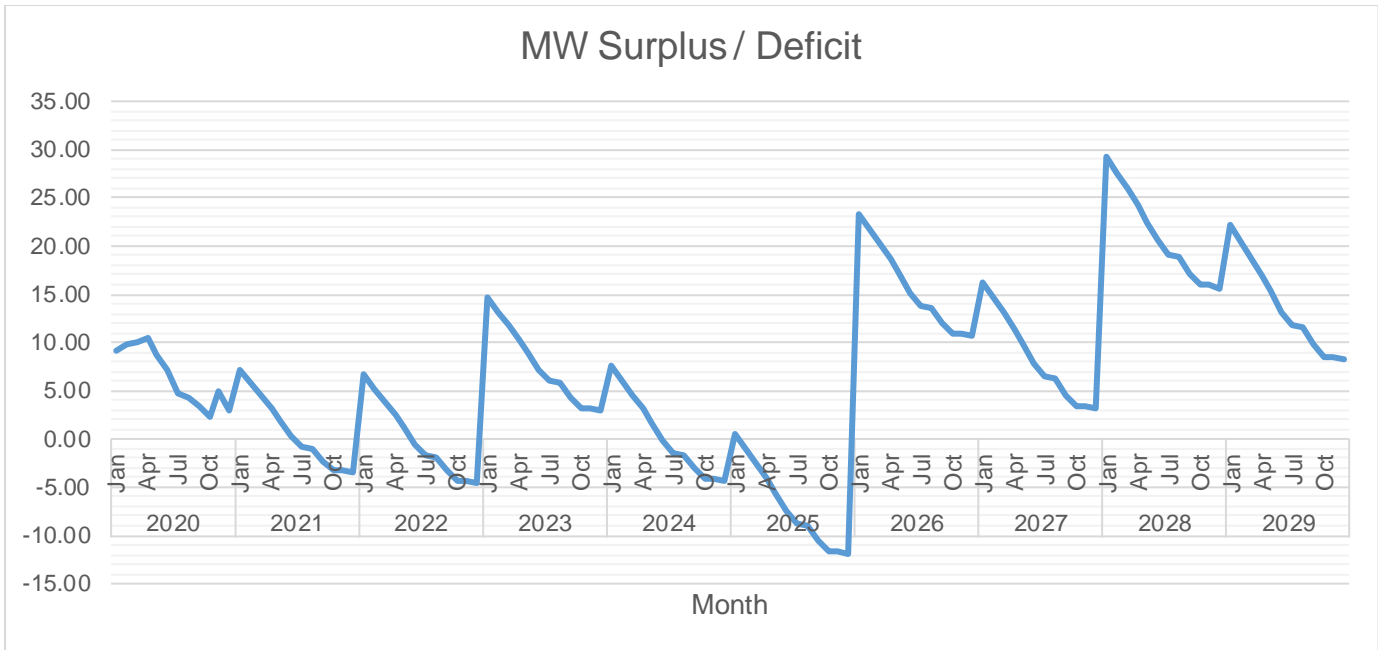
Out of all the available supply, the largest is 70 MW from Sarangani Energy Corporation (2011-138RC). This is followed by 63.45 MW from NPC-PSALM. Supply deficit as shown in 2025 will be sourced from WESM.



The first wave of supply procurement will be for 40 MW which is forecasted to be available by the month of January 2022. This will be followed by an RPS requirement of 15MW on January 2023; and another base power of 30MW on January 2026; the last wave would be 20MW on January 2028 subject to energy growth constraints.



Currently, there is over-contracting by 5% which is enough and is a justifiable surplus for contingency purposes. The highest target contracting level is 112% which is expected to occur in February 2028. The lowest target contracting level is 95% which is expected to occur in November 2025 and that deficiency would be sourced from WESM.



Currently, there is over-contracting by 9.04 MW. The highest surplus is 27.57 MW which is expected to occur on the month of February 2028. The lowest deficit is 11.94 MW which is expected to occur on the month of November 2025.

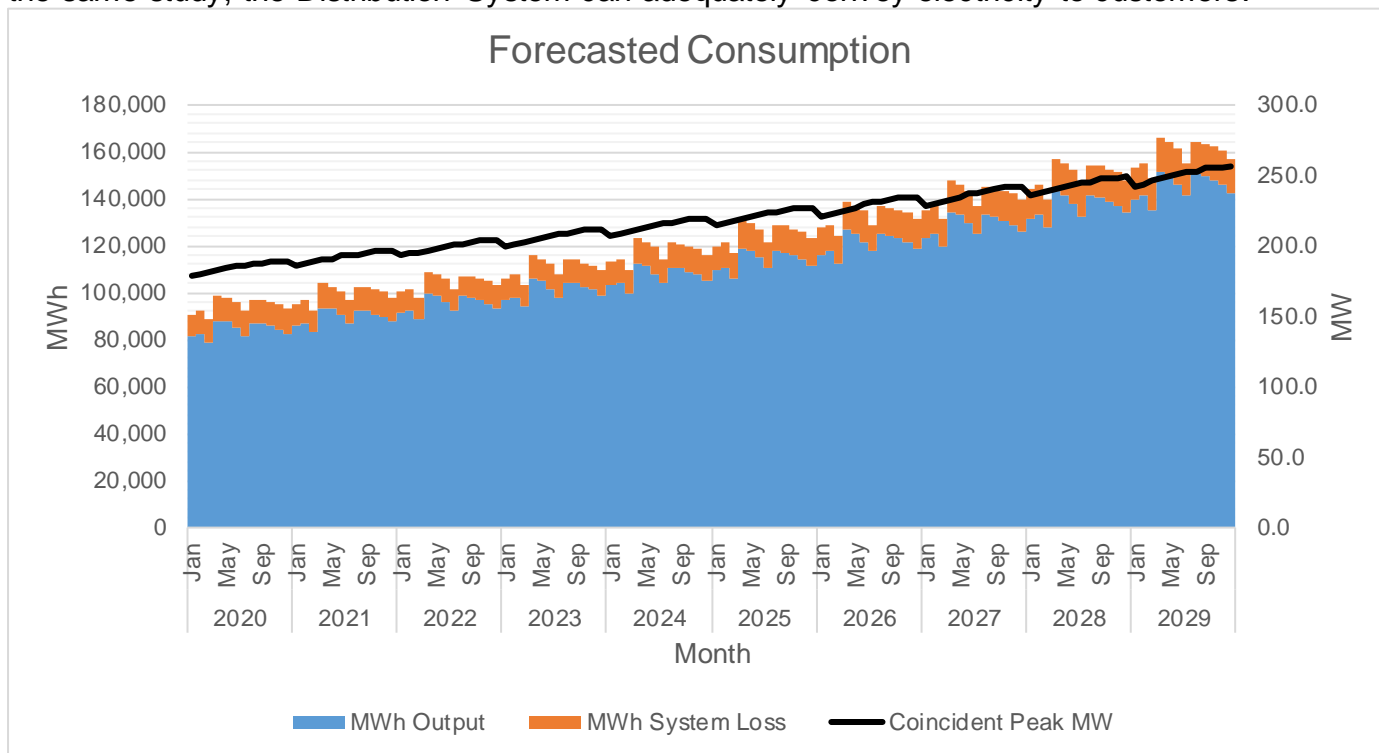
		MWh Offtake	MWh Output	MWh System Loss	Transm'n Loss	System Loss
2020	Jan	92,738	81,215	9,604	2.07%	10.57%
	Feb	93,939	82,062	9,987	2.01%	10.85%
	Mar	90,441	78,649	9,725	2.29%	11.00%
	Apr	101,248	88,298	10,674	2.25%	10.79%
	May	101,248	87,478	10,353	3.37%	10.58%
	Jun	99,991	84,934	11,370	3.69%	11.81%
	Jul	95,455	81,941	10,155	3.52%	11.03%
	Aug	99,991	87,287	9,963	2.74%	10.24%
	Sep	99,991	86,797	10,352	2.84%	10.66%
	Oct	99,991	85,624	10,684	3.68%	11.09%
	Nov	97,723	84,602	10,895	2.28%	11.41%
	Dec	95,455	82,850	10,671	2.03%	11.41%
2021	Jan	97,722	86,228	9,161	2.39%	9.60%
	Feb	98,239	87,127	9,526	1.61%	9.86%
	Mar	95,073	83,506	9,276	2.41%	10.00%
	Apr	107,105	93,746	10,183	2.97%	9.80%
	May	104,790	92,877	9,876	1.94%	9.61%
	Jun	104,527	90,178	10,846	3.35%	10.74%
	Jul	99,991	87,003	9,687	3.30%	10.02%
	Aug	104,527	92,677	9,504	2.24%	9.30%
	Sep	104,527	92,158	9,875	2.39%	9.68%
	Oct	104,527	90,914	10,192	3.27%	10.08%
	Nov	103,239	89,830	10,393	2.92%	10.37%
	Dec	99,991	87,972	10,179	1.84%	10.37%
2022	Jan	101,382	91,558	8,653	1.16%	8.63%
	Feb	103,650	92,512	8,998	2.06%	8.86%
	Mar	99,537	88,671	8,762	2.11%	8.99%

		MWh Offtake	MWh Output	MWh System Loss	Transm'n Loss	System Loss
	Apr	110,820	99,537	9,617	1.50%	8.81%
	May	110,820	98,616	9,328	2.59%	8.64%
	Jun	110,454	95,754	10,244	4.03%	9.66%
	Jul	103,650	92,385	9,149	2.04%	9.01%
	Aug	110,454	98,407	8,976	2.78%	8.36%
	Sep	110,454	97,857	9,327	2.96%	8.70%
	Oct	110,454	96,538	9,626	3.88%	9.07%
	Nov	108,186	95,389	9,816	2.75%	9.33%
	Dec	105,918	93,419	9,614	2.72%	9.33%
2023	Jan	108,465	97,225	9,181	1.90%	8.63%
	Feb	110,733	98,239	9,547	2.66%	8.86%
	Mar	107,177	94,164	9,297	3.47%	8.99%
	Apr	117,537	105,695	10,205	1.39%	8.80%
	May	117,537	104,719	9,898	2.48%	8.64%
	Jun	115,269	101,683	10,870	2.36%	9.66%
	Jul	110,733	98,110	9,708	2.63%	9.00%
	Aug	117,537	104,500	9,525	2.99%	8.35%
	Sep	117,537	103,918	9,897	3.17%	8.70%
	Oct	117,537	102,520	10,214	4.09%	9.06%
	Nov	115,269	101,302	10,416	3.08%	9.32%
	Dec	113,001	99,212	10,201	3.17%	9.32%
2024	Jan	115,381	103,252	9,742	2.07%	8.62%
	Feb	115,381	104,329	10,131	0.80%	8.85%
	Mar	112,913	100,007	9,865	2.69%	8.98%
	Apr	125,418	112,244	10,828	1.87%	8.80%
	May	125,418	111,210	10,502	2.95%	8.63%
	Jun	122,185	107,989	11,534	2.18%	9.65%
	Jul	117,649	104,199	10,301	2.68%	9.00%
	Aug	127,118	110,982	10,107	4.74%	8.35%
	Sep	125,118	110,366	10,501	3.40%	8.69%
	Oct	122,185	108,883	10,838	2.02%	9.05%
	Nov	122,185	107,593	11,052	2.90%	9.32%
	Dec	122,185	105,377	10,825	4.90%	9.32%
2025	Jan	122,878	109,665	10,337	2.34%	8.61%
	Feb	125,146	110,810	10,749	2.87%	8.84%
	Mar	120,324	106,225	10,468	3.02%	8.97%
	Apr	134,218	119,211	11,490	2.62%	8.79%
	May	134,218	118,115	11,144	3.69%	8.62%
	Jun	132,118	114,700	12,239	3.92%	9.64%
	Jul	123,118	110,680	10,930	1.22%	8.99%
	Aug	134,218	117,878	10,724	4.18%	8.34%
	Sep	134,218	117,227	11,143	4.36%	8.68%
	Oct	129,118	115,655	11,500	1.52%	9.04%
	Nov	129,118	114,288	11,727	2.40%	9.31%
	Dec	127,118	111,938	11,486	2.91%	9.31%
2026	Jan	132,769	116,490	10,969	4.00%	8.61%
	Feb	132,769	117,707	11,406	2.75%	8.83%
	Mar	126,181	112,844	11,107	1.77%	8.96%

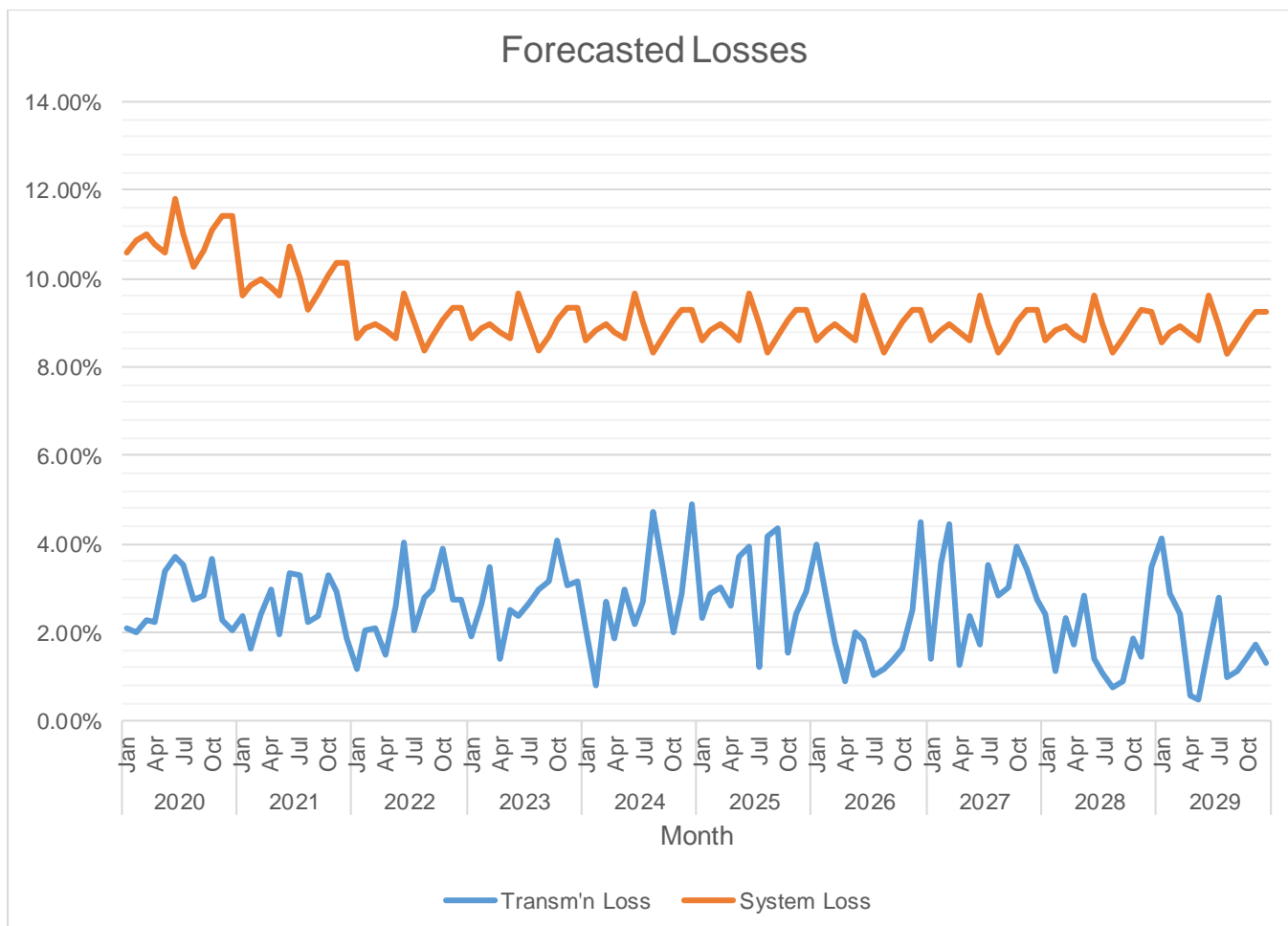
		MWh Offtake	MWh Output	MWh System Loss	Transm'n Loss	System Loss
	Apr	140,075	126,625	12,192	0.90%	8.78%
	May	140,075	125,464	11,825	1.99%	8.61%
	Jun	137,305	121,842	12,987	1.80%	9.63%
	Jul	130,501	117,579	11,598	1.01%	8.98%
	Aug	138,238	125,219	11,379	1.19%	8.33%
	Sep	138,238	124,530	11,824	1.36%	8.67%
	Oct	137,305	122,864	12,203	1.63%	9.03%
	Nov	137,305	121,415	12,444	2.51%	9.30%
	Dec	137,305	118,925	12,188	4.51%	9.30%
2027	Jan	137,305	123,757	11,639	1.39%	8.60%
	Feb	142,238	125,050	12,103	3.58%	8.82%
	Mar	137,807	119,892	11,786	4.45%	8.95%
	Apr	149,338	134,518	12,937	1.26%	8.77%
	May	149,338	133,289	12,547	2.35%	8.60%
	Jun	145,738	129,447	13,780	1.72%	9.62%
	Jul	142,238	124,926	12,307	3.52%	8.97%
	Aug	149,338	133,035	12,075	2.83%	8.32%
	Sep	149,338	132,306	12,546	3.00%	8.66%
	Oct	149,338	130,542	12,948	3.92%	9.02%
	Nov	147,238	129,007	13,204	3.41%	9.28%
	Dec	143,238	126,367	12,932	2.75%	9.28%
2028	Jan	147,385	131,497	12,350	2.40%	8.59%
	Feb	147,385	132,871	12,843	1.13%	8.81%
	Mar	143,208	127,401	12,506	2.31%	8.94%
	Apr	159,418	142,923	13,727	1.74%	8.76%
	May	159,418	141,622	13,314	2.81%	8.59%
	Jun	154,318	137,549	14,622	1.39%	9.61%
	Jul	147,385	132,754	13,059	1.07%	8.96%
	Aug	155,318	141,362	12,812	0.74%	8.31%
	Sep	155,318	140,591	13,312	0.91%	8.65%
	Oct	155,318	138,722	13,739	1.84%	9.01%
	Nov	153,318	137,096	14,011	1.44%	9.27%
	Dec	153,318	134,298	13,723	3.46%	9.27%
2029	Jan	159,418	139,744	13,105	4.12%	8.57%
	Feb	159,418	141,206	13,627	2.88%	8.80%
	Mar	152,318	135,405	13,270	2.39%	8.93%
	Apr	167,418	151,879	14,566	0.58%	8.75%
	May	165,418	150,501	14,127	0.48%	8.58%
	Jun	164,418	146,183	15,516	1.65%	9.60%
	Jul	159,418	141,098	13,856	2.80%	8.94%
	Aug	165,418	150,235	13,595	0.96%	8.30%
	Sep	165,418	149,421	14,126	1.13%	8.64%
	Oct	164,418	147,441	14,579	1.46%	9.00%
	Nov	163,418	145,720	14,867	1.73%	9.26%
	Dec	159,418	142,754	14,561	1.32%	9.26%

MWh Offtake is forecasted using Time Series Analysis. The assumed load factor is 70%.

System Loss is calculated through a Load Flow Study conducted using ETAP software. Based on the same study, the Distribution System can adequately convey electricity to customers.



MWh Output was expected to grow at a rate of 5-6% annually.



Transmission loss is generally between 2 to 4%. The System Loss is expected to range from 8% to 11%.

Power Supply

Case No.	Type	GenCo	Minimum MW	Minimum MWh/yr	PSA Start	PSA End
2011-138RC	Base	Sarangani Energy Corporation	70.00	544,320	6/3/2011	6/11/2036
2014-041RC	Base	Therma South, Inc.	5.00	38,400	9/27/2013	9/28/2038
RESA	Base	Hedcor, Inc.	20.00	113,880	7/2/2018	12/30/2020
RESA	Base	Lamsan Power Corporation	13.50	110,000	5/1/2018	12/30/2020
2014-037RC	Peaking	Peakpower Soccsargen, Inc.	19.50	145,197	3/20/2013	3/20/2028
PSALM	Base	Power Sector Assets and Liabilities Management Corporation	63.45	555,779	12/26/2017	12/26/2020

The PSA with Sarangani Energy Corporation filed with ERC under Case No. 2011-138RC was procured through Swiss challenge. It was selected to provide for base requirements due to lack of power in the Mindanao grid resulting in manual load dropping in 2010. Historically, the utilization of the PSA is 40-100%. The actual billed overall monthly charge under the PSA ranged from 7.00 P/kWh to 11.00 P/KWh in the same period.

The PSA with Therma South, Inc. filed with ERC under Case No. 2014-041RC was procured through Swiss challenge. It was selected to provide for base requirements due to the immediate need of power to adequately supply the growing need in power in the SOCOTECO II franchise area. Historically, the utilization of the PSA is 40-100%. The actual billing for the overall monthly charges under the PSA ranges from 5.00 P/kWh to 7.00 P/KWh in the same period.

The PSA with Hedcor and Lamsan filed with ERC RESA was procured. It was selected to provide for base requirements due to immediate need of power to adequately supply the growing need in power in the SOCOTECO II franchise area as priority dispatch because it is a Renewable Energy Source. The actual billing for the overall monthly charge is based on previous month's blended rate of SOCOTECO II.

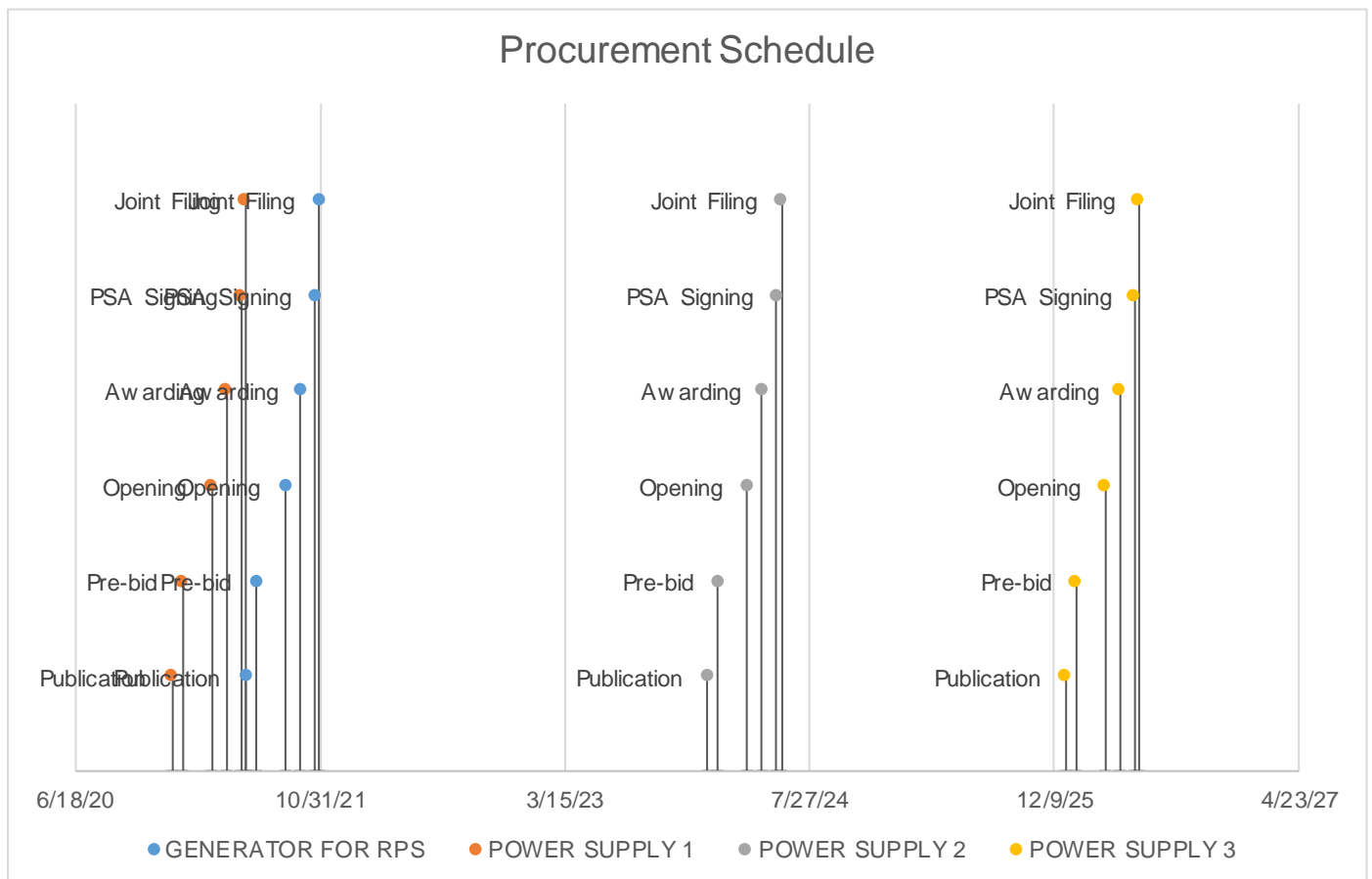
The PSA with Peak Power was procured ERC under Case No. 2014-037RC. It was selected to provide for peak requirements to cater the peak demand of SOCOTECO II without interruption and for voltage support in case of plant shutdown due to maintenance.

The PSA with PSALM was selected to provide for base requirements to maintain enough supply and minimize the generation cost. Historically, the utilization of the PSA is 40-100%. The actual billing for the overall monthly charge under the PSA ranged from 2.00 P/kWh to 3.00 P/KWh in the same period.

Case No.	Type	GenCo	Minimum MW	Minimum MWh/yr	PSA Start	PSA End
PSALM	Base	Power Sector Assets and Liabilities Management Corporation	65.00	500,000	12/26/2020	12/25/2029

The PSA with PSALM filed was procured through an agreement. It was selected to provide for base requirements due to rate considerations. Historically, the utilization of the PSA is 40% or less during summer months and 100% of the contract during rainy season. The actual billing for the overall monthly charge under the PSA ranged from 2.00 P/kWh to 3.00 P/KWh in the same period.

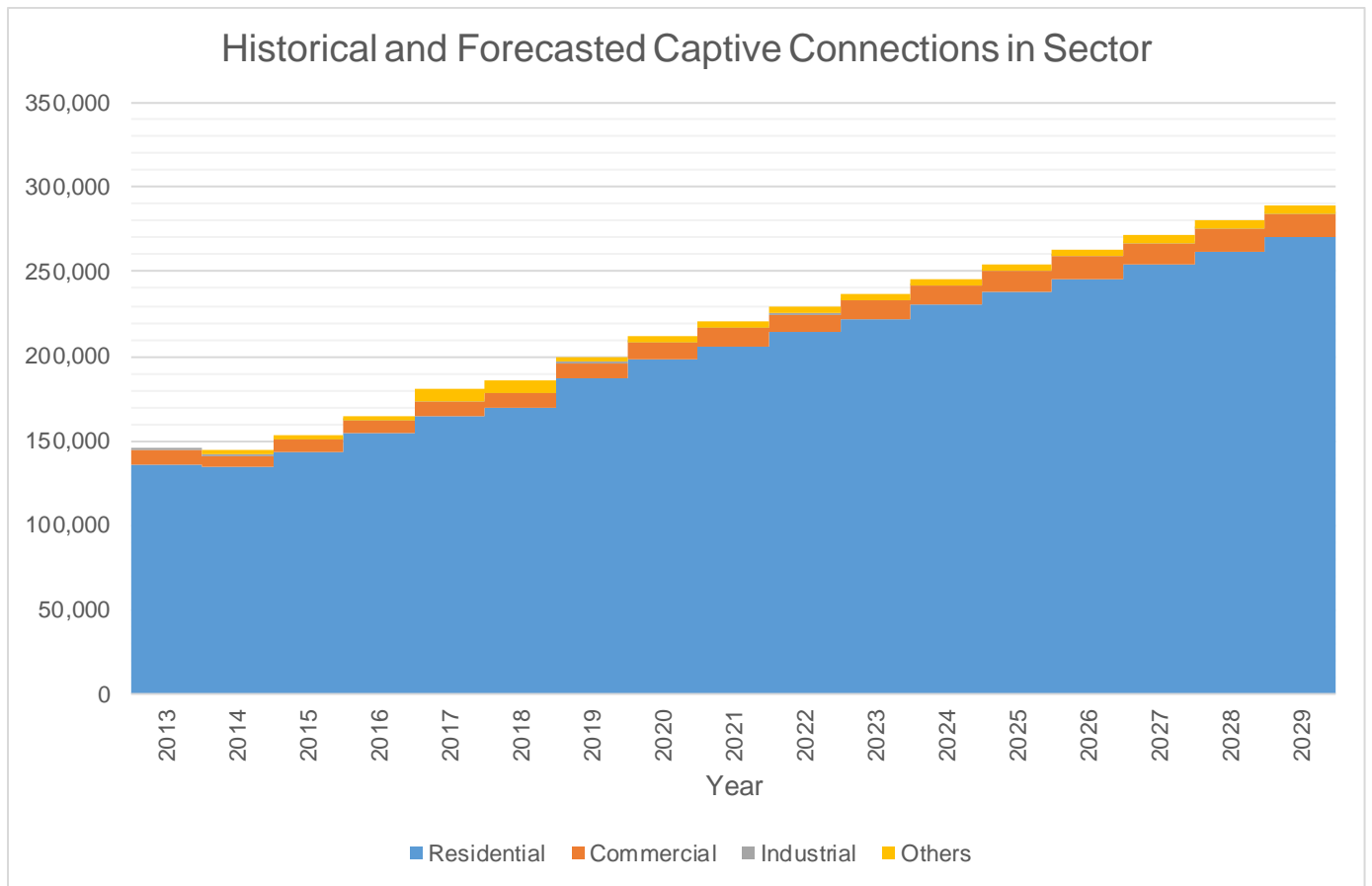
	GENERATOR FOR RPS	POWER SUPPLY 1	POWER SUPPLY 2	POWER SUPPLY 3
Type	Base	Base	Base	Base
Minimum MW	15.00	40.00	30.00	20.00
Minimum MWh/yr	85,000	241,920	181,440	120,960
PSA Start	1/1/2023	1/1/2022	1/1/2026	1/1/2028
PSA End	1/1/2033	1/1/2037	1/1/2041	1/1/2043
Publication	6/1/2021	1/1/2021	1/1/2024	1/1/2026
Pre-bid	6/22/2021	1/22/2021	1/22/2024	1/22/2026
Opening	8/21/2021	3/23/2021	3/22/2024	3/23/2026
Awarding	9/20/2021	4/22/2021	4/21/2024	4/22/2026
PSA Signing	10/20/2021	5/22/2021	5/21/2024	5/22/2026
Joint Filing	10/29/2021	5/31/2021	5/30/2024	5/31/2026



Please refer to the following activities which are the schedule of our power procurement:

- 40 MW of supply which is planned to be available on 2022;
- 15 MW supply for the RPS Compliance in 2023;
- 30 MW power supply agreement will be on 2024 that will be on commercial operation in January 2026;
- 20 MW power supply agreement that will be commercially available on January 2028

Captive Customer Connections



The number of residential connections is expected to grow at a rate of 6% annually. This type of customer class is expected to account for 37-40% of the total consumption in the next succeeding years.