



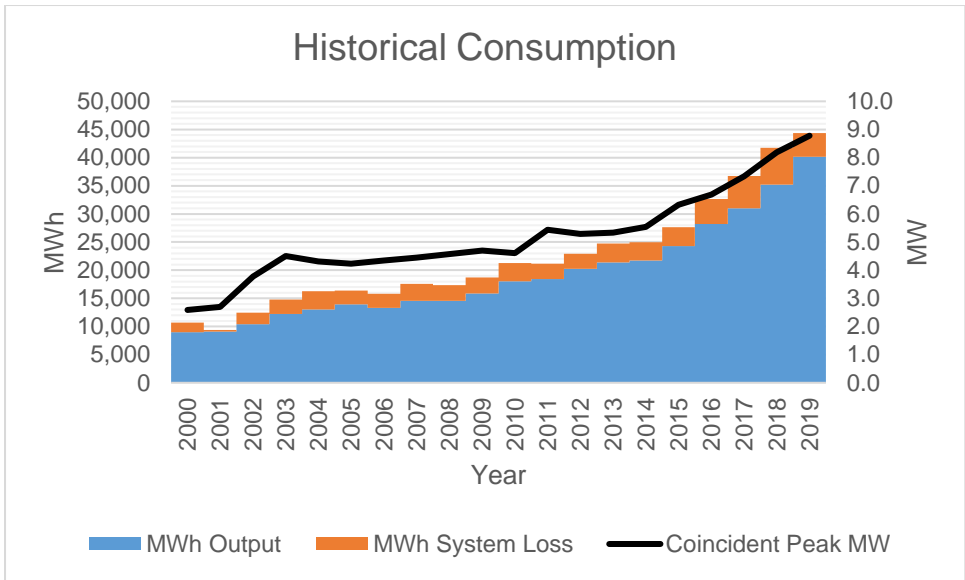
# **Power Supply Procurement Plan 2020**

**GUIMARAS ELECTRIC COOPERATIVE  
(GUIMELCO)**

## Historical Consumption Data

	Coincident Peak MW	MWh Offtake	WESM	MWh Input	MWh Output	MWh System Loss	Load Factor	Discrepancy	Transm'n Loss	System Loss
2000	2.59	10,686	0	10,686	8,968	1,718	47%	0.00%	0.00%	16.07%
2001	2.70	9,386	0	9,386	9,107	279	40%	0.00%	0.00%	2.98%
2002	3.77	12,457	0	12,457	10,405	2,052	38%	0.00%	0.00%	16.47%
2003	4.51	14,783	0	14,783	12,229	2,554	37%	0.00%	0.00%	17.28%
2004	4.31	16,292	0	16,292	13,018	3,273	43%	0.00%	0.00%	20.09%
2005	4.23	16,362	0	16,362	13,942	2,420	44%	0.00%	0.00%	14.79%
2006	4.35	15,837	0	15,837	13,290	2,547	42%	0.00%	0.00%	16.08%
2007	4.44	17,573	0	17,573	14,551	3,022	45%	0.00%	0.00%	17.20%
2008	4.57	17,335	0	17,335	14,552	2,783	43%	0.00%	0.00%	16.05%
2009	4.70	18,718	0	18,718	15,842	2,877	45%	0.00%	0.00%	15.37%
2010	4.61	21,261	0	21,261	18,038	3,223	53%	0.00%	0.00%	15.16%
2011	5.44	21,649	511	21,130	18,449	2,681	44%	0.00%	2.39%	12.69%
2012	5.29	23,758	881	22,900	20,246	2,654	49%	0.00%	3.61%	11.59%
2013	5.33	25,236	370	24,751	21,361	3,390	53%	0.00%	1.92%	13.70%
2014	5.54	26,135	119	24,951	21,719	3,232	51%	0.00%	4.53%	12.95%
2015	6.32	28,338	-788	27,657	24,312	3,345	50%	0.00%	2.40%	12.09%
2016	6.69	32,740	446	32,666	28,182	4,485	56%	0.00%	0.23%	13.73%
2017	7.34	37,294	3,383	36,737	30,975	5,751	57%	-0.03%	1.49%	15.65%
2018	8.19	41,961	6,786	41,740	35,231	6,510	58%	0.00%	0.53%	15.60%
2019	8.78	45,057	2,596	44,362	40,178	4,184	58%	0.00%	1.54%	9.43%

The Peak Demand increased from 8.19 MW in 2018 to 8.78 MW in 2019 at a rate of 7.18 % due to additional loads. MWh Offtake increased from 41,961 MWh in 2018 to 45,057 MWh in 2019 at a rate of 7.95 % due to additional loads. Within the same period, Load Factor ranged from 57% to 58 %.

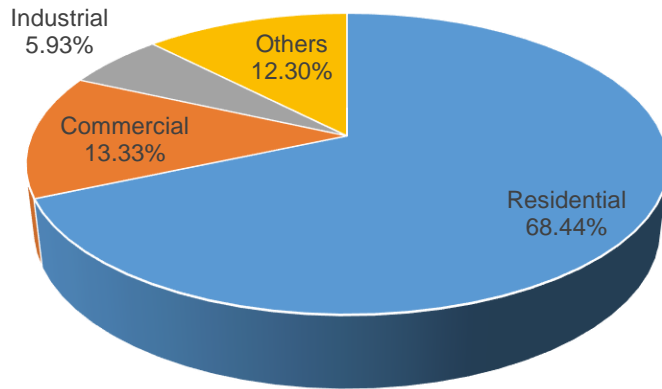


MWh Output increased from year 2018 to year 2019 at a rate of 13.10 %, while MWh System Loss decreased from 15.60% in year 2018 to 9.43% in year 2019 due to new to substation.



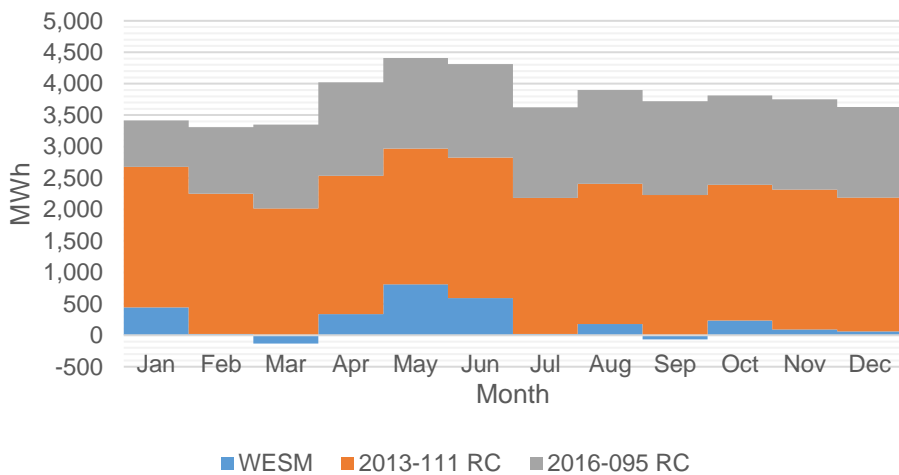
Historically, the overall Transmission Loss ranged from 0.53% to 4.53% while the overall System Loss ranged from 15.65% to 9.43%.

## Previous Year's Shares of Energy Sales

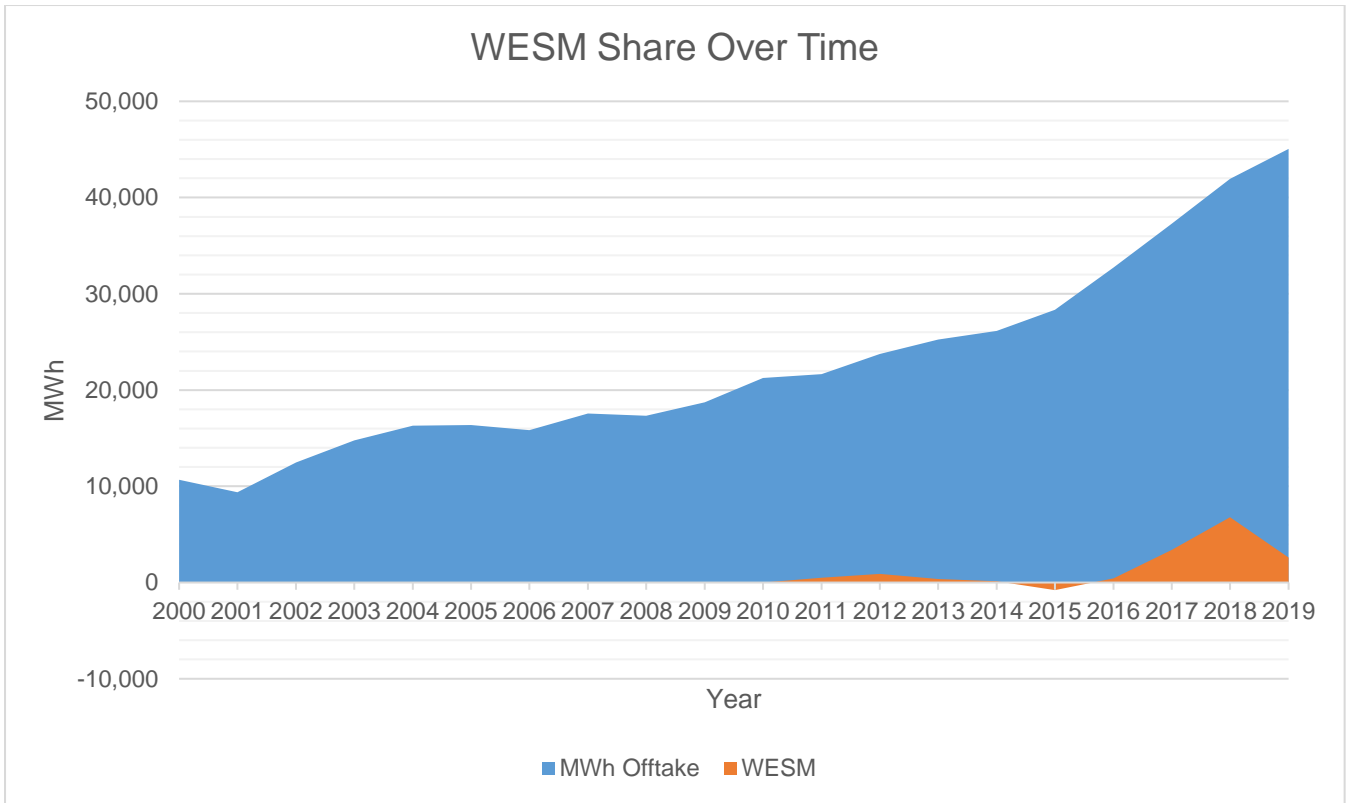


Residential customers account for the bulk of energy sales at 68.44% due to the high number of connections.

## MWh Offtake for Last Historical Year

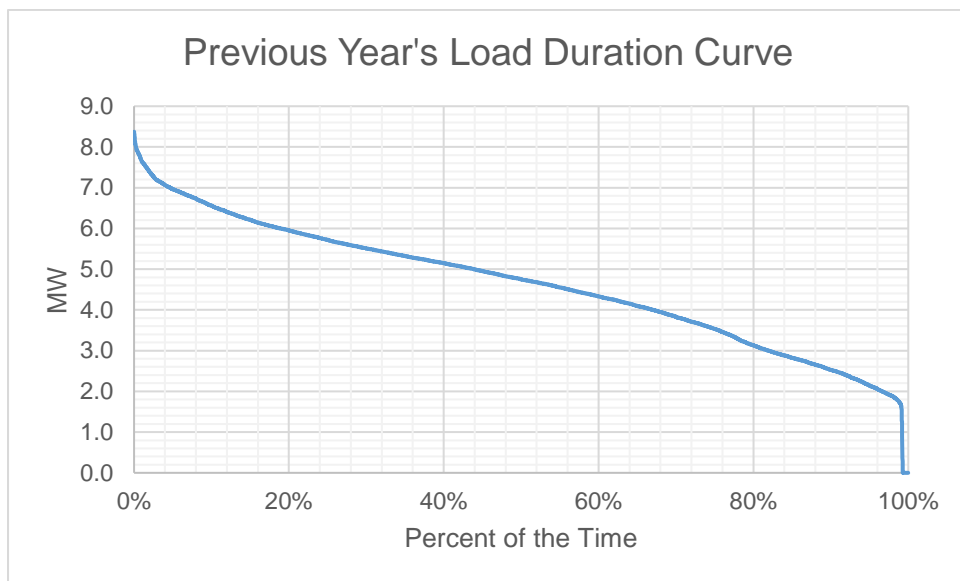


For 2013-111 RC and 2016-095 RC, the total Offtake for the last historical year is lower than the quantity stipulated in the PSA. The PSA with 2013-111 RC accounts for the bulk of MWh Offtake.

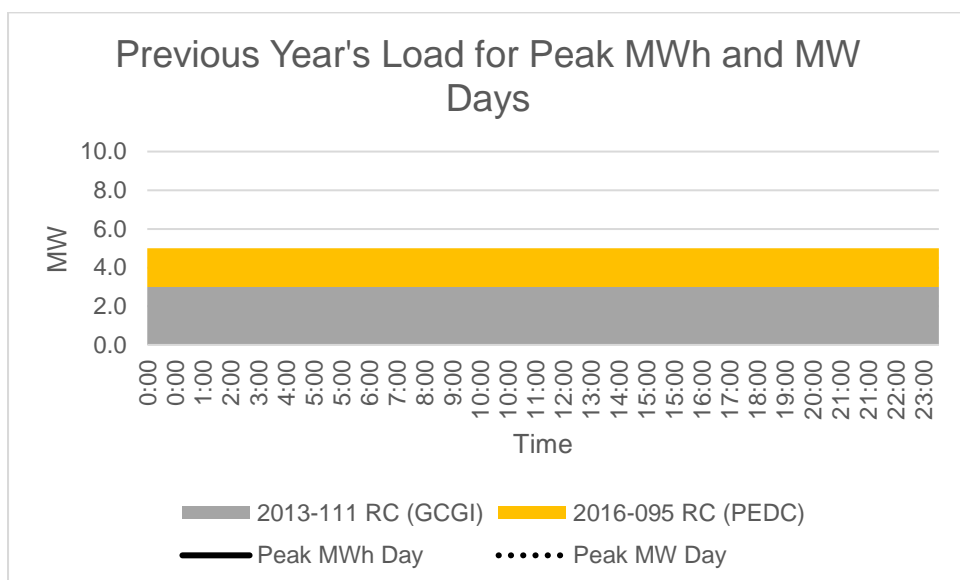


WESM Offtake decreased from 6,786 MWh in 2018 to 2,596 MWh in 2019 at a rate of 62 % due to additional contracted capacity from PEDC. The share of WESM in the total Offtake ranged from 0.46 % to 16.17 %.

# Previous Year's Load Profile

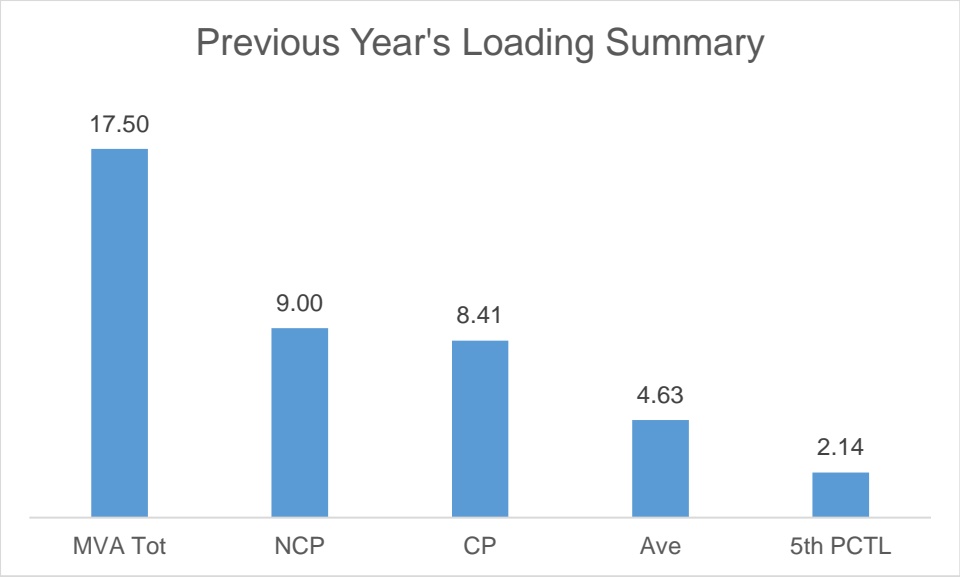


Based on the Load Duration Curve, the minimum load is 2.14 MW and the maximum load is 9 MW for the last historical year.



Peak MW occurred on 19:00 due to bulk of customers are residential. As shown in the Load Curves, the available supply is lower than the Peak Demand.

### Previous Year's Loading Summary



The Non-coincident Peak Demand is 9 MW, which is around 29% of the total substation capacity of 23 MVA at a power factor of 97.52%. A safe estimate of the true minimum load is the fifth percentile load of 2.14 MW which is 23% of the Non-coincident Peak Demand.

Metering Point	Substation MVA	Substation Peak MW
San Miguel	10	5.112
Zaldivar	7.5	3.884

As of this year there is no substation/s loaded at above 70%.

## Forecasted Consumption Data

		Coincident Peak MW	Contracted MW	Pending MW	Planned MW	Retail Electricity Suppliers MW	Existing Contracting Level	Target Contracting Level	MW Surplus / Deficit
2020	Jan	8.40	5.00	0.00	0.000		59%	59%	-3.40
	Feb	7.00	5.00	0.00	0.000		71%	71%	-2.00
	Mar	7.33	5.00	0.00	0.000		68%	68%	-2.33
	Apr	9.34	5.00	0.00	0.000		54%	54%	-4.34
	May	9.24	7.50	0.00	0.000		81%	81%	-1.74
	Jun	9.04	7.50	0.00	0.000		83%	83%	-1.54
	Jul	8.25	7.50	0.00	0.000		91%	91%	-0.75
	Aug	7.88	7.50	0.00	0.000		95%	95%	-0.38
	Sep	7.98	7.50	0.00	0.000		94%	94%	-0.48
	Oct	8.84	7.50	0.00	0.000		85%	85%	-1.34
	Nov	8.14	7.50	0.00	0.000		92%	92%	-0.64
	Dec	8.30	7.50	0.00	0.000		90%	90%	-0.80
2021	Jan	8.96	7.50	0.00	0.000		84%	84%	-1.46
	Feb	7.46	7.50	0.00	0.000		100%	100%	0.04
	Mar	7.82	7.50	0.00	0.000		96%	96%	-0.32
	Apr	9.96	7.50	0.00	0.000		75%	75%	-2.46
	May	9.85	7.50	0.00	0.000		76%	76%	-2.35
	Jun	9.64	7.50	0.00	0.000		78%	78%	-2.14
	Jul	8.80	7.50	0.00	0.000		85%	85%	-1.30
	Aug	8.41	7.50	0.00	0.000		89%	89%	-0.91
	Sep	8.51	7.50	0.00	0.000		88%	88%	-1.01
	Oct	9.43	7.50	0.00	0.000		80%	80%	-1.93
	Nov	8.68	7.50	0.00	0.000		86%	86%	-1.18
	Dec	8.85	7.50	0.00	0.000		85%	85%	-1.35
2022	Jan	9.51	7.50	0.00	0.000		79%	79%	-2.01
	Feb	7.92	7.50	0.00	0.000		95%	95%	-0.42
	Mar	8.30	7.50	0.00	0.000		90%	90%	-0.80
	Apr	10.57	7.50	0.00	0.000		71%	71%	-3.07
	May	10.45	5.00	0.00	2.500		48%	72%	-2.95

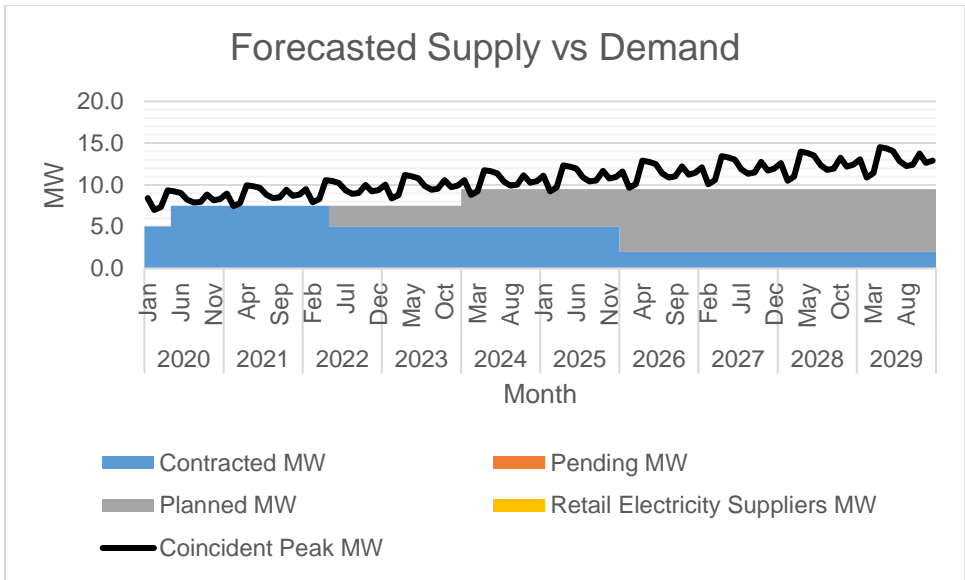


	Jun	10.23	5.00	0.00	2.500		49%	73%	-2.73
	Jul	9.34	5.00	0.00	2.500		54%	80%	-1.84
	Aug	8.92	5.00	0.00	2.500		56%	84%	-1.42
	Sep	9.03	5.00	0.00	2.500		55%	83%	-1.53
	Oct	10.01	5.00	0.00	2.500		50%	75%	-2.51
	Nov	9.21	5.00	0.00	2.500		54%	81%	-1.71
	Dec	9.40	5.00	0.00	2.500		53%	80%	-1.90
2023	Jan	10.05	5.00	0.00	2.500		50%	75%	-2.55
	Feb	8.37	5.00	0.00	2.500		60%	90%	-0.87
	Mar	8.77	5.00	0.00	2.500		57%	86%	-1.27
	Apr	11.17	5.00	0.00	2.500		45%	67%	-3.67
	May	11.05	5.00	0.00	2.500		45%	68%	-3.55
	Jun	10.81	5.00	0.00	2.500		46%	69%	-3.31
	Jul	9.86	5.00	0.00	2.500		51%	76%	-2.36
	Aug	9.43	5.00	0.00	2.500		53%	80%	-1.93
	Sep	9.54	5.00	0.00	2.500		52%	79%	-2.04
	Oct	10.58	5.00	0.00	2.500		47%	71%	-3.08
	Nov	9.73	5.00	0.00	2.500		51%	77%	-2.23
	Dec	9.93	5.00	0.00	2.500		50%	76%	-2.43
2024	Jan	10.58	5.00	0.00	4.500		47%	90%	-1.08
	Feb	8.81	5.00	0.00	4.500		57%	108%	0.69
	Mar	9.23	5.00	0.00	4.500		54%	103%	0.27
	Apr	11.75	5.00	0.00	4.500		43%	81%	-2.25
	May	11.63	5.00	0.00	4.500		43%	82%	-2.13
	Jun	11.38	5.00	0.00	4.500		44%	84%	-1.88
	Jul	10.38	5.00	0.00	4.500		48%	91%	-0.88
	Aug	9.92	5.00	0.00	4.500		50%	96%	-0.42
	Sep	10.05	5.00	0.00	4.500		50%	95%	-0.55
	Oct	11.13	5.00	0.00	4.500		45%	85%	-1.63
	Nov	10.24	5.00	0.00	4.500		49%	93%	-0.74
	Dec	10.45	5.00	0.00	4.500		48%	91%	-0.95
2025	Jan	11.10	5.00	0.00	4.500		45%	86%	-1.60
	Feb	9.24	5.00	0.00	4.500		54%	103%	0.26
	Mar	9.68	5.00	0.00	4.500		52%	98%	-0.18
	Apr	12.33	5.00	0.00	4.500		41%	77%	-2.83

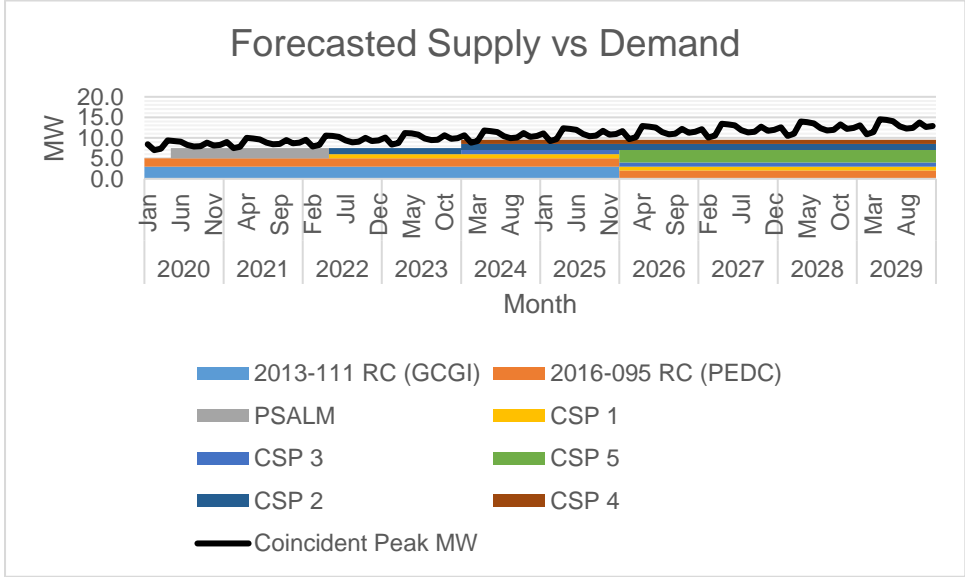
	May	12.19	5.00	0.00	4.500		41%	78%	-2.69
	Jun	11.93	5.00	0.00	4.500		42%	80%	-2.43
	Jul	10.89	5.00	0.00	4.500		46%	87%	-1.39
	Aug	10.41	5.00	0.00	4.500		48%	91%	-0.91
	Sep	10.54	5.00	0.00	4.500		47%	90%	-1.04
	Oct	11.68	5.00	0.00	4.500		43%	81%	-2.18
	Nov	10.75	5.00	0.00	4.500		47%	88%	-1.25
	Dec	10.96	5.00	0.00	4.500		46%	87%	-1.46
2026	Jan	11.60	2.00	0.00	7.500		17%	82%	-2.10
	Feb	9.66	2.00	0.00	7.500		21%	98%	-0.16
	Mar	10.12	2.00	0.00	7.500		20%	94%	-0.62
	Apr	12.89	2.00	0.00	7.500		16%	74%	-3.39
	May	12.75	2.00	0.00	7.500		16%	74%	-3.25
	Jun	12.48	2.00	0.00	7.500		16%	76%	-2.98
	Jul	11.39	2.00	0.00	7.500		18%	83%	-1.89
	Aug	10.88	2.00	0.00	7.500		18%	87%	-1.38
	Sep	11.02	2.00	0.00	7.500		18%	86%	-1.52
	Oct	12.21	2.00	0.00	7.500		16%	78%	-2.71
	Nov	11.24	2.00	0.00	7.500		18%	85%	-1.74
	Dec	11.46	2.00	0.00	7.500		17%	83%	-1.96
2027	Jan	12.10	2.00	0.00	7.500		17%	79%	-2.60
	Feb	10.08	2.00	0.00	7.500		20%	94%	-0.58
	Mar	10.56	2.00	0.00	7.500		19%	90%	-1.06
	Apr	13.44	2.00	0.00	7.500		15%	71%	-3.94
	May	13.30	2.00	0.00	7.500		15%	71%	-3.80
	Jun	13.01	2.00	0.00	7.500		15%	73%	-3.51
	Jul	11.87	2.00	0.00	7.500		17%	80%	-2.37
	Aug	11.35	2.00	0.00	7.500		18%	84%	-1.85
	Sep	11.49	2.00	0.00	7.500		17%	83%	-1.99
	Oct	12.73	2.00	0.00	7.500		16%	75%	-3.23
	Nov	11.72	2.00	0.00	7.500		17%	81%	-2.22
	Dec	11.95	2.00	0.00	7.500		17%	79%	-2.45
2028	Jan	12.59	2.00	0.00	7.500		16%	75%	-3.09
	Feb	10.48	2.00	0.00	7.500		19%	91%	-0.98
	Mar	10.98	2.00	0.00	7.500		18%	87%	-1.48

	Apr	13.98	2.00	0.00	7.500		14%	68%	-4.48
	May	13.83	2.00	0.00	7.500		14%	69%	-4.33
	Jun	13.53	2.00	0.00	7.500		15%	70%	-4.03
	Jul	12.35	2.00	0.00	7.500		16%	77%	-2.85
	Aug	11.80	2.00	0.00	7.500		17%	80%	-2.30
	Sep	11.95	2.00	0.00	7.500		17%	79%	-2.45
	Oct	13.25	2.00	0.00	7.500		15%	72%	-3.75
	Nov	12.19	2.00	0.00	7.500		16%	78%	-2.69
	Dec	12.43	2.00	0.00	7.500		16%	76%	-2.93
2029	Jan	13.06	2.00	0.00	7.500		15%	73%	-3.56
	Feb	10.88	2.00	0.00	7.500		18%	87%	-1.38
	Mar	11.40	2.00	0.00	7.500		18%	83%	-1.90
	Apr	14.51	2.00	0.00	7.500		14%	65%	-5.01
	May	14.36	2.00	0.00	7.500		14%	66%	-4.86
	Jun	14.05	2.00	0.00	7.500		14%	68%	-4.55
	Jul	12.82	2.00	0.00	7.500		16%	74%	-3.32
	Aug	12.25	2.00	0.00	7.500		16%	78%	-2.75
	Sep	12.40	2.00	0.00	7.500		16%	77%	-2.90
	Oct	13.75	2.00	0.00	7.500		15%	69%	-4.25
	Nov	12.65	2.00	0.00	7.500		16%	75%	-3.15
	Dec	12.91	2.00	0.00	7.500		15%	74%	-3.41

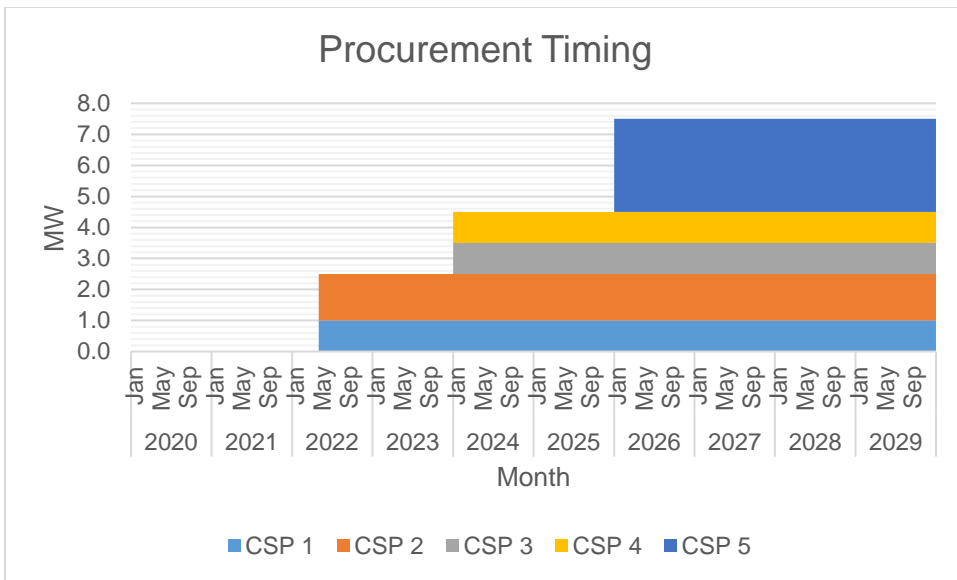
The Peak Demand was forecasted using 2019 historical data and was assumed to occur on the month of April due to summer season and Guimaras manggahan festival. Monthly Peak Demand is at its lowest on the month of February due to cold weather. In general, Peak Demand is expected to grow at a rate of 4.52 % annually.



The available supply is generally below the Peak Demand. This is because our peak demand is very high compared to our base demand.



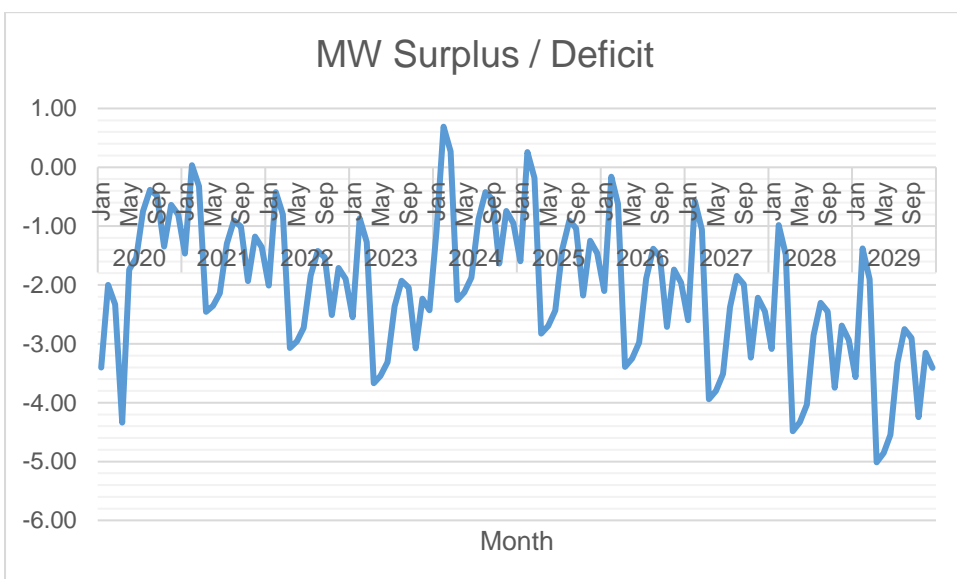
Of the available supply, the largest is 3 MW from 2013-111 RC (GCGI). This is followed by 2.5 MW and 2 MW from PSALM and 2016-095 RC (PEDC) respectively.



The first wave of supply procurement will be for 2.5 MW planned to be available by the month of April 26, 2022. This will be followed by 2 MW.



Currently, there is under-contracting by around 59.45% relative to peak demand.



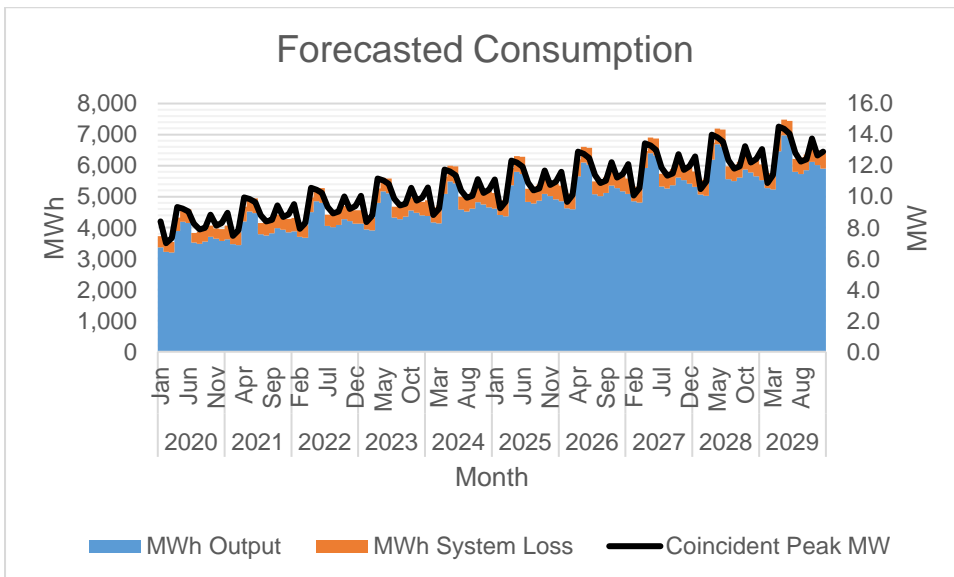
Currently, there is under-contacting by 3.40 MW relative to peak demand. The highest deficit is 6.17 MW which is expected to occur on the month of April 2029. The lowest deficit is 0.18 MW which is expected to occur on the month of March 2025.

		<b>MWh Offtake</b>	<b>MWh Output</b>	<b>MWh System Loss</b>	<b>Transm'n Loss</b>	<b>System Loss</b>
2020	Jan	3,735	3,369	362	0.12%	9.70%
	Feb	3,550	3,218	321	0.30%	9.07%
	Mar	3,560	3,196	349	0.43%	9.84%
	Apr	4,340	3,896	432	0.29%	9.98%
	May	4,620	4,192	407	0.45%	8.85%
	Jun	4,595	4,147	442	0.13%	9.64%
	Jul	3,860	3,520	312	0.72%	8.15%
	Aug	3,930	3,479	396	1.41%	10.22%
	Sep	3,970	3,547	387	0.90%	9.84%
	Oct	4,090	3,700	368	0.52%	9.05%
	Nov	4,030	3,646	328	1.39%	8.26%
	Dec	3,990	3,576	375	0.97%	9.49%
2021	Jan	4,128	3,627	437	1.56%	10.75%
	Feb	3,938	3,463	415	1.53%	10.70%
	Mar	3,897	3,438	407	1.32%	10.59%
	Apr	4,690	4,201	476	0.28%	10.18%
	May	5,005	4,523	435	0.92%	8.78%
	Jun	4,984	4,474	472	0.76%	9.54%
	Jul	4,185	3,791	354	0.94%	8.54%
	Aug	4,304	3,747	461	2.24%	10.95%
	Sep	4,334	3,821	441	1.64%	10.35%
	Oct	4,424	3,988	425	0.25%	9.64%
	Nov	4,361	3,928	398	0.78%	9.20%
	Dec	4,328	3,853	434	0.96%	10.12%
2022	Jan	4,365	3,881	430	1.24%	9.97%
	Feb	4,195	3,704	409	1.95%	9.94%
	Mar	4,093	3,678	401	0.36%	9.82%
	Apr	5,013	4,501	468	0.86%	9.43%
	May	5,304	4,850	437	0.32%	8.26%
	Jun	5,303	4,796	473	0.62%	8.98%
	Jul	4,442	4,059	356	0.61%	8.06%
	Aug	4,523	4,011	462	1.11%	10.34%
	Sep	4,572	4,091	443	0.83%	9.77%
	Oct	4,715	4,271	427	0.36%	9.09%
	Nov	4,626	4,207	400	0.41%	8.69%
	Dec	4,580	4,125	435	0.43%	9.54%
2023	Jan	4,572	4,131	431	0.22%	9.45%
	Feb	4,371	3,941	411	0.43%	9.44%
	Mar	4,341	3,913	402	0.60%	9.32%
	Apr	5,311	4,797	470	0.83%	8.93%
	May	5,650	5,171	434	0.80%	7.75%
	Jun	5,593	5,114	471	0.16%	8.43%
	Jul	4,697	4,322	354	0.45%	7.57%
	Aug	4,751	4,270	459	0.45%	9.71%
	Sep	4,834	4,357	440	0.77%	9.17%

	Oct	5,003	4,550	424	0.58%	8.53%
	Nov	4,942	4,481	398	1.27%	8.16%
	Dec	4,852	4,393	432	0.54%	8.96%
2024	Jan	4,918	4,377	508	0.68%	10.40%
	Feb	4,710	4,174	485	1.07%	10.42%
	Mar	4,818	4,144	573	2.09%	12.16%
	Apr	5,662	5,087	555	0.36%	9.83%
	May	6,015	5,486	512	0.28%	8.53%
	Jun	6,005	5,425	555	0.42%	9.28%
	Jul	5,026	4,580	418	0.55%	8.36%
	Aug	5,103	4,525	542	0.71%	10.69%
	Sep	5,190	4,617	519	1.04%	10.10%
	Oct	5,330	4,823	500	0.13%	9.39%
	Nov	5,239	4,750	470	0.36%	9.01%
	Dec	5,203	4,656	510	0.71%	9.87%
2025	Jan	5,159	4,618	505	0.71%	9.85%
	Feb	4,916	4,403	483	0.62%	9.89%
	Mar	4,882	4,371	471	0.83%	9.72%
	Apr	5,958	5,372	551	0.59%	9.31%
	May	6,333	5,795	508	0.46%	8.07%
	Jun	6,314	5,731	551	0.51%	8.78%
	Jul	5,290	4,834	416	0.76%	7.92%
	Aug	5,368	4,775	538	1.02%	10.13%
	Sep	5,416	4,873	515	0.51%	9.56%
	Oct	5,624	5,092	497	0.63%	8.88%
	Nov	5,503	5,014	468	0.38%	8.54%
	Dec	5,433	4,915	506	0.22%	9.34%
2026	Jan	5,382	4,854	501	0.50%	9.35%
	Feb	5,167	4,627	479	1.18%	9.39%
	Mar	5,074	4,593	467	0.27%	9.24%
	Apr	6,228	5,651	547	0.48%	8.83%
	May	6,702	6,099	505	1.46%	7.65%
	Jun	6,678	6,030	548	1.50%	8.33%
	Jul	5,534	5,083	412	0.71%	7.50%
	Aug	5,591	5,021	535	0.64%	9.62%
	Sep	5,689	5,124	512	0.94%	9.08%
	Oct	5,920	5,355	493	1.21%	8.43%
	Nov	5,809	5,273	464	1.23%	8.09%
	Dec	5,730	5,168	503	1.03%	8.87%
2027	Jan	5,614	5,086	501	0.48%	8.97%
	Feb	5,407	4,847	479	1.50%	9.00%
	Mar	5,333	4,811	467	1.02%	8.85%
	Apr	6,522	5,925	547	0.76%	8.46%
	May	6,991	6,397	505	1.28%	7.32%
	Jun	6,953	6,324	548	1.16%	7.97%
	Jul	5,780	5,327	412	0.71%	7.18%
	Aug	5,805	5,261	535	0.16%	9.22%
	Sep	5,911	5,370	512	0.49%	8.70%
	Oct	6,141	5,614	493	0.56%	8.07%
	Nov	6,018	5,527	464	0.44%	7.75%
	Dec	5,939	5,416	503	0.33%	8.50%

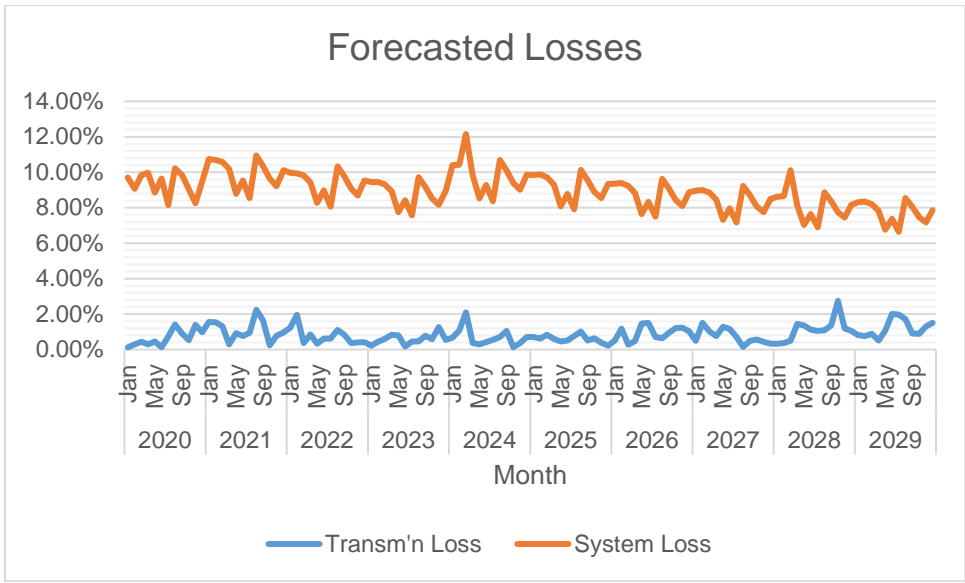
2028	Jan	5,834	5,313	501	0.34%	8.61%
	Feb	5,562	5,063	479	0.36%	8.65%
	Mar	5,618	5,025	566	0.49%	10.12%
	Apr	6,840	6,194	547	1.44%	8.12%
	May	7,293	6,689	505	1.36%	7.02%
	Jun	7,242	6,613	548	1.12%	7.65%
	Jul	6,042	5,566	412	1.06%	6.89%
	Aug	6,098	5,497	535	1.08%	8.86%
	Sep	6,208	5,612	512	1.36%	8.35%
	Oct	6,540	5,867	493	2.75%	7.75%
	Nov	6,316	5,776	464	1.19%	7.44%
	Dec	6,228	5,660	503	1.04%	8.16%
2029	Jan	6,088	5,537	501	0.82%	8.30%
	Feb	5,798	5,274	480	0.76%	8.34%
	Mar	5,754	5,235	468	0.89%	8.20%
	Apr	7,041	6,458	548	0.51%	7.82%
	May	7,562	6,975	505	1.08%	6.76%
	Jun	7,596	6,896	548	2.00%	7.36%
	Jul	6,339	5,801	413	1.98%	6.64%
	Aug	6,374	5,729	535	1.72%	8.54%
	Sep	6,419	5,849	512	0.91%	8.05%
	Oct	6,669	6,116	493	0.89%	7.46%
	Nov	6,571	6,021	465	1.30%	7.17%
	Dec	6,500	5,899	503	1.50%	7.86%

MWh Offtake was forecasted using the historical data. The assumed load factor is 67 %.



MWh Output was expected to grow at an average rate of 6.07 %.





Transmission Loss is expected to range from 2.75 % to 0.12 % while System Loss is expected to range from 10.24 % to 7.72 %

## Power Supply

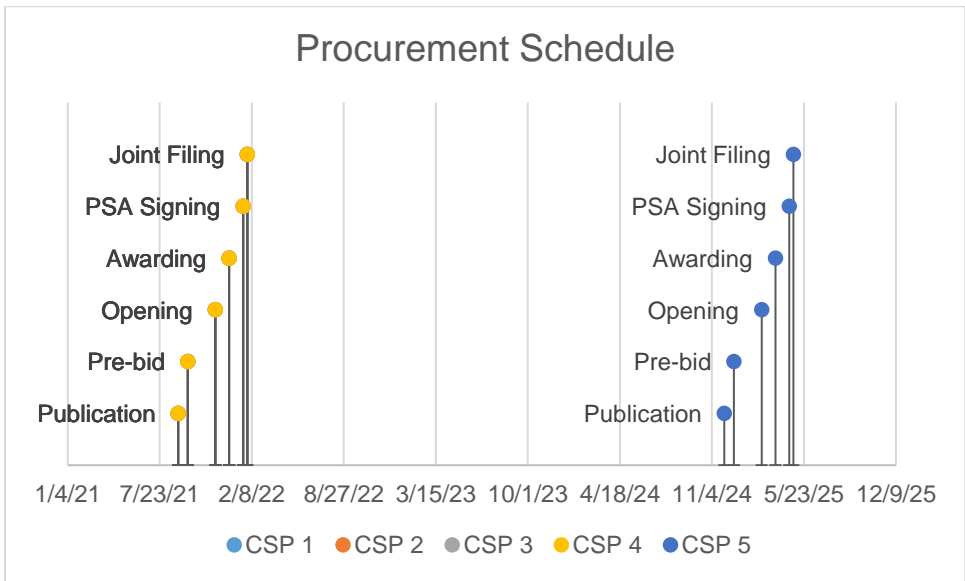
Case No.	Type	GenCo	Minimum MW	Minimum MWh/yr	PSA Start	PSA End
2013-111 RC	Base	Green Core Geothermal, Inc.	3.00	26,280	12/26/2012	12/25/2025
2016-095 RC	Base	Panay Energy Development Corporation	2.00	17,520	2/26/2017	2/25/2042
PSALM	Base	Power Sector Assets and Liabilities Management Corporation	2.50	10,950	4/26/2020	4/25/2022

The PSA with Green Core Geothermal filed with ERC under Case No. 2013-111 RC was procured through negotiation from NPC expired contract since they are the one bought the NPC power plant. It was selected to provide for base requirements.

The PSA with Panay Energy Development Corporation filed with ERC under Case No. 2016-095 RC was procured through Panay-Guimaras Power Supply Consortium. It was selected to provide for base requirements.

The PSA with Power Sector Assets and Liabilities Management Corporation was procured through emergency purchased. It was selected to provide for peak requirements.

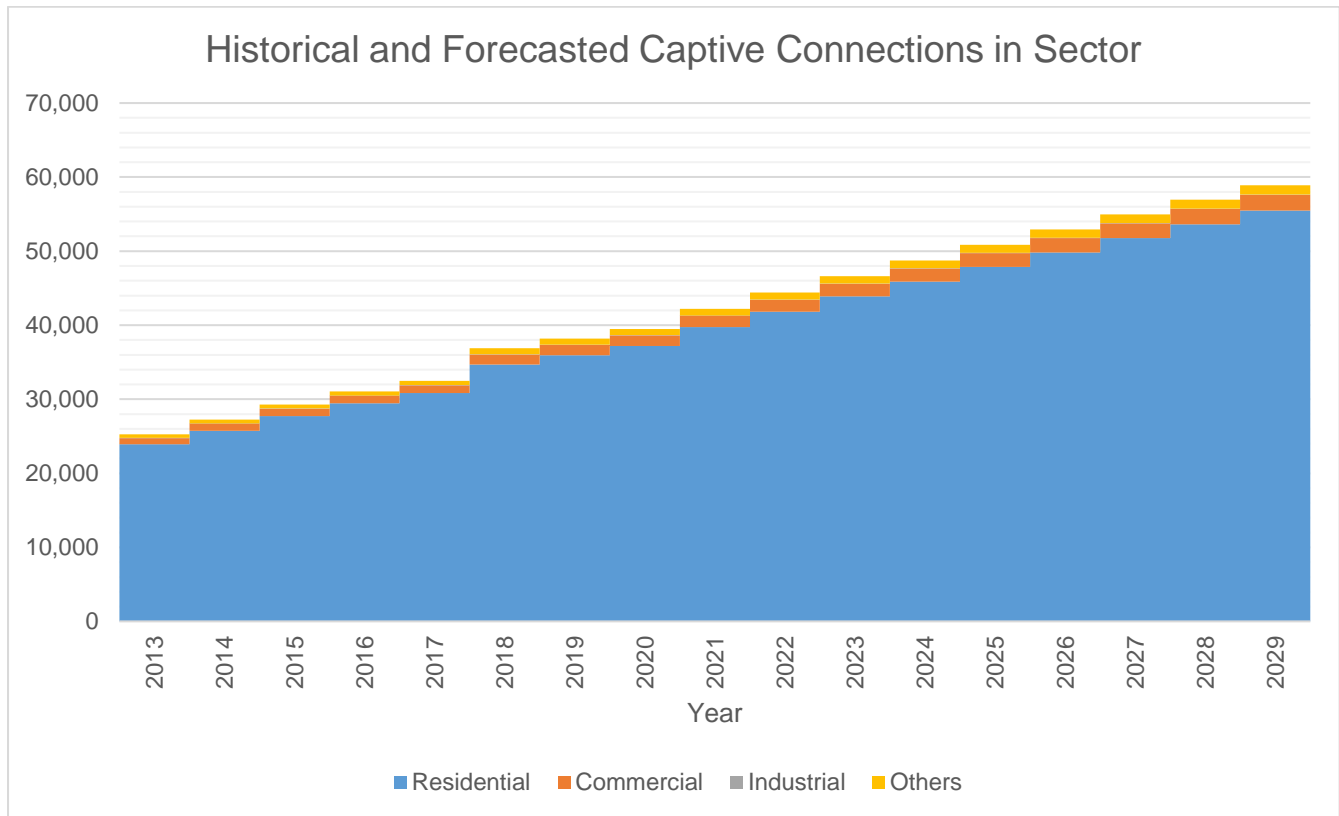
	CSP 1	CSP 2	CSP 3	CSP 4	CSP 5
Type	Base	Peaking	Base	Peaking	Base
Minimum MW	1.00	1.50	1.00	1.00	3.00
Minimum MWh/yr	8,760	2,190	8,760	1,460	26,280
PSA Start	4/26/2022	4/26/2022	12/26/2024	12/26/2024	12/26/2025
PSA End	4/25/2031	4/25/2031	12/25/2033	12/25/2033	12/25/2034
Publication	9/1/2021	9/1/2021	9/1/2021	9/1/2021	12/1/2024
Pre-bid	9/22/2021	9/22/2021	9/22/2021	9/22/2021	12/22/2024
Opening	11/21/2021	11/21/2021	11/21/2021	11/21/2021	2/20/2025
Awarding	12/21/2021	12/21/2021	12/21/2021	12/21/2021	3/22/2025
PSA Signing	1/20/2022	1/20/2022	1/20/2022	1/20/2022	4/21/2025
Joint Filing	1/29/2022	1/29/2022	1/29/2022	1/29/2022	4/30/2025



For the procurement of CSP 1, 2, 3 and 4 that has a total of 4.5 MW of supply which is planned to be available on April 26, 2022 for CSP 1 and 2 and December 26, 2024 for CSP 3 and 4, the first publication or launch of CSP will be on September 01, 2021. Joint filing is planned on January 29, 2022, or 150 days later, in accordance with DOE's 2018 CSP Policy.

For the procurement of 3 MW of supply which is planned to be available on December 26, 2025, the first publication or launch of CSP will be on December 01, 2024. Joint filing is planned on April 30, 2025, or 150 days later, in accordance with DOE's 2018 CSP Policy

# Captive Customer Connections



The number of Residential connections is expected to grow at a rate of 4.09 % annually. Said customer class is expected to account for 4.13 % of the total consumption.