

## INTRODUCTION

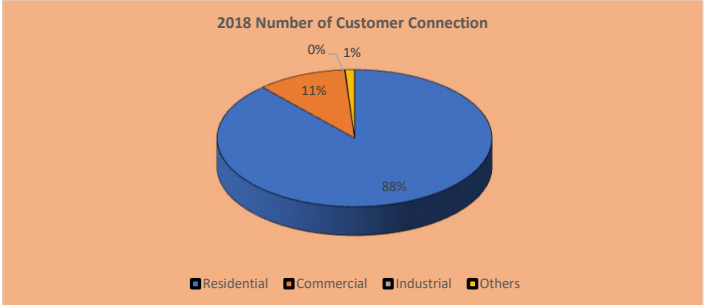
### DISTRIBUTION UTILITIES PROFILE

Cabanatuan, a first-class component city comprising 89 barangays and Central Luzon's fifth largest city in terms of population. Cabanatuan Electric Corporation (formerly Samahang Magsasaka Incorporada) has been granted a renewed franchise to construct, operate and maintain distribution system for the conveyance of power to the end-users in the City of Cabanatuan with a franchise area of 192.28 sq.km. for another twenty-five years starting February 06, 2010. Based on the status of energization last 2018, City's area is 98% electrified.



| Number of Customer      | ACTUAL       |              | FORECAST         |              |              |              |               |               |               |               |               |
|-------------------------|--------------|--------------|------------------|--------------|--------------|--------------|---------------|---------------|---------------|---------------|---------------|
|                         | 2018         | 2019         | 2020             | 2021         | 2022         | 2023         | 2024          | 2025          | 2026          | 2027          | 2028          |
| Residential             | 68590        | 72050        | 75515            | 78985        | 82460        | 85940        | 89425         | 92915         | 96410         | 99910         | 103415        |
| Commercial              | 8164         | 8370         | 8578             | 8789         | 9012         | 9236         | 9465          | 9700          | 9941          | 10164         | 10164         |
| Industrial              | 55           | 58           | 60               | 63           | 66           | 68           | 70            | 73            | 75            | 77            | 80            |
| Others                  | 851          | 895          | 935.082965       | 975          | 1019         | 1063         | 1112          | 1162          | 1212          | 1265          | 1319          |
| Contestable             | 3            | 3            | 5                | 5            | 5            | 5            | 5             | 5             | 5             | 5             | 5             |
| <b>Total (Captives)</b> | <b>77660</b> | <b>81373</b> | <b>85088.083</b> | <b>88812</b> | <b>92557</b> | <b>96307</b> | <b>100072</b> | <b>103850</b> | <b>107638</b> | <b>111416</b> | <b>114978</b> |

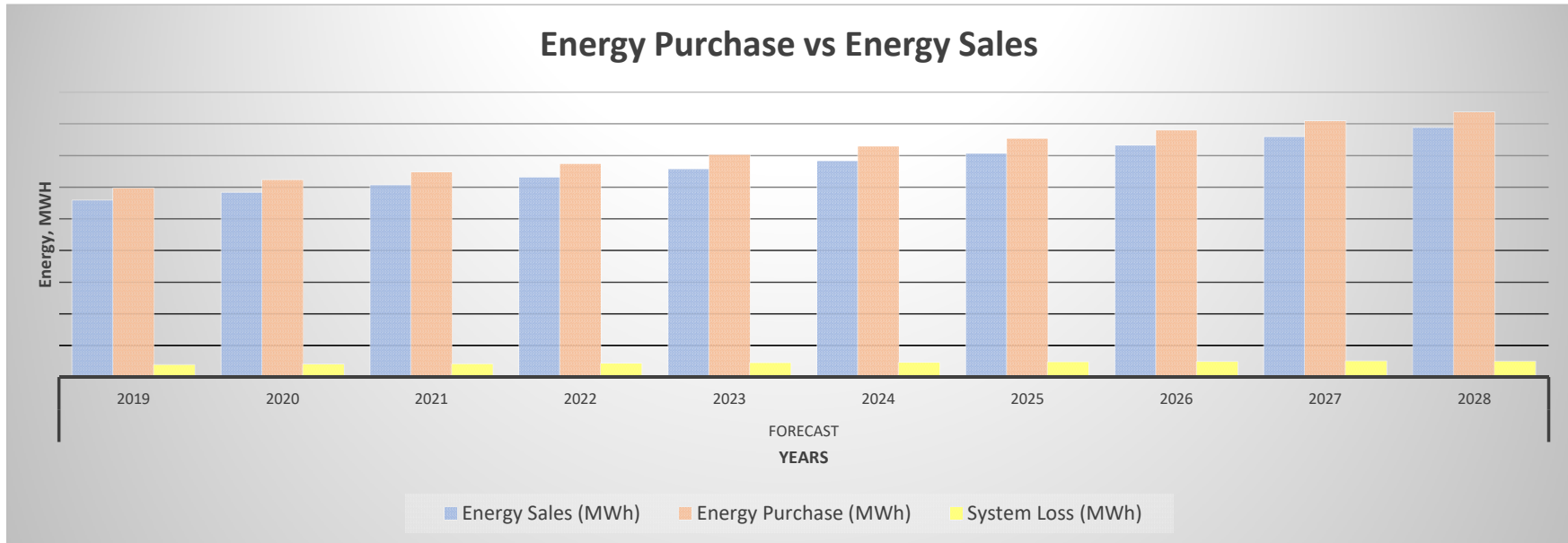
Based on the submitted data coming from Cabanatuan City Planning and Development Office, the city's population is growing at a rate of around 2% annually while the number of households is increasing at a rate of around 5%. Majority of CELCOR loads, around 45% of its total demand, are consumed by residential customers. Significant projection in loads are accounted to subdivisions by some well known developer in the housing sector (Camella, Ayala Land, Aboitiz Land, MDC and SMDC), and growth in the commercial and industry zone.



## ENERGY SALES AND PURCHASE

| ENERGY SALES AND PURCHASE | HISTORICAL |         |         |         |         |         |         |         |         |         |
|---------------------------|------------|---------|---------|---------|---------|---------|---------|---------|---------|---------|
|                           | 2009       | 2010    | 2011    | 2012    | 2013    | 2014    | 2015    | 2016    | 2017    | 2018    |
| Energy Sales (MWh)        | 162,572    | 177,209 | 172,701 | 182,242 | 183,025 | 195,280 | 211,717 | 243,365 | 254,304 | 265,779 |
| Energy Purchase (MWh)     | 176,267    | 190,997 | 184,968 | 195,284 | 196,725 | 209,834 | 226,918 | 260,320 | 271,143 | 284,171 |
| System Loss (MWh)         | 14,075     | 13,788  | 12,267  | 13,042  | 13,700  | 14,555  | 15,201  | 16,955  | 16,839  | 18,392  |

| ENERGY SALES AND PURCHASE | FORECAST |         |         |         |         |         |         |         |         |         |
|---------------------------|----------|---------|---------|---------|---------|---------|---------|---------|---------|---------|
|                           | 2019     | 2020    | 2021    | 2022    | 2023    | 2024    | 2025    | 2026    | 2027    | 2028    |
| Energy Sales (MWh)        | 279,151  | 291,457 | 302,920 | 315,223 | 328,449 | 341,236 | 352,883 | 365,487 | 379,048 | 393,546 |
| Energy Purchase (MWh)     | 298,251  | 311,398 | 323,647 | 336,792 | 350,923 | 364,158 | 376,388 | 389,640 | 404,023 | 418,375 |
| System Loss (MWh)         | 19,101   | 19,941  | 20,727  | 21,569  | 22,474  | 22,921  | 23,505  | 24,153  | 24,974  | 24,829  |

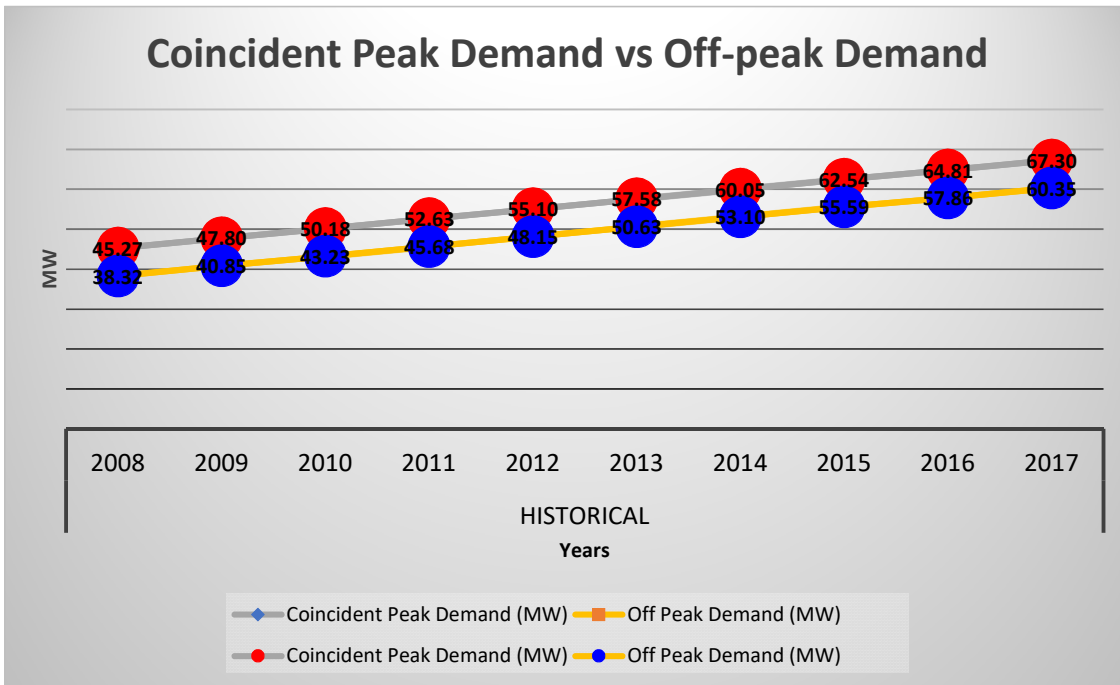


## DEMAND

**Note: CAPTIVE ONLY**

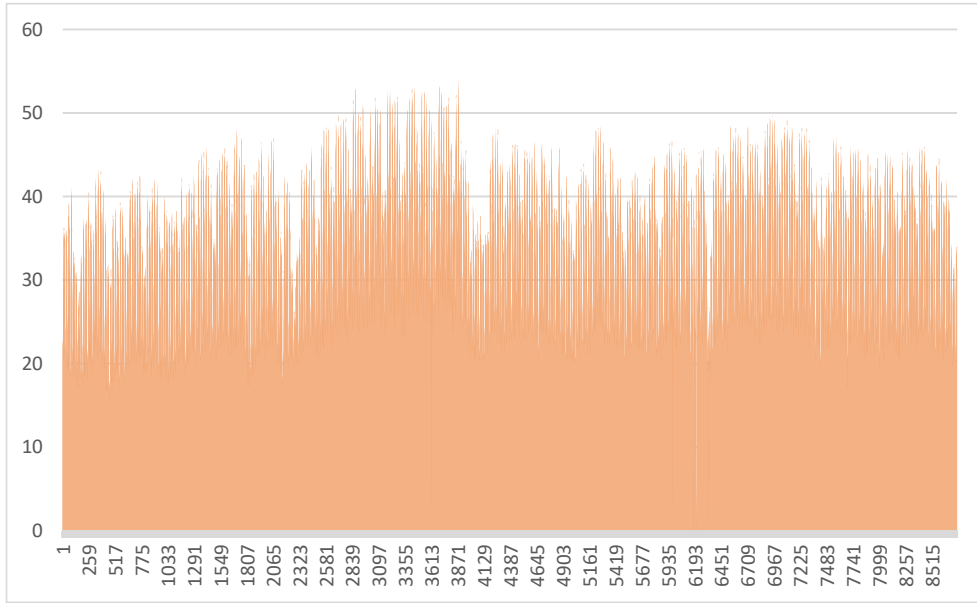
| Demand                      | HISTORICAL |       |       |       |       |       |       |       |       |       |
|-----------------------------|------------|-------|-------|-------|-------|-------|-------|-------|-------|-------|
|                             | 2009       | 2010  | 2011  | 2012  | 2013  | 2014  | 2015  | 2016  | 2017  | 2018  |
| Coincident Peak Demand (MW) | 31.95      | 36.71 | 34.90 | 35.90 | 37.90 | 40.38 | 43.24 | 49.27 | 44.04 | 45.24 |
| Off Peak Demand (MW)        | 27.55      | 32.11 | 30.10 | 30.97 | 31.58 | 32.66 | 37.16 | 42.32 | 36.57 | 38.64 |

| Demand                      | FORECAST |       |       |       |       |       |       |       |       |       |
|-----------------------------|----------|-------|-------|-------|-------|-------|-------|-------|-------|-------|
|                             | 2019     | 2020  | 2021  | 2022  | 2023  | 2024  | 2025  | 2026  | 2027  | 2028  |
| Coincident Peak Demand (MW) | 45.27    | 47.80 | 50.18 | 52.63 | 55.10 | 57.58 | 60.05 | 62.54 | 64.81 | 67.30 |
| Off Peak Demand (MW)        | 38.32    | 40.85 | 43.23 | 45.68 | 48.15 | 50.63 | 53.10 | 55.59 | 57.86 | 60.35 |

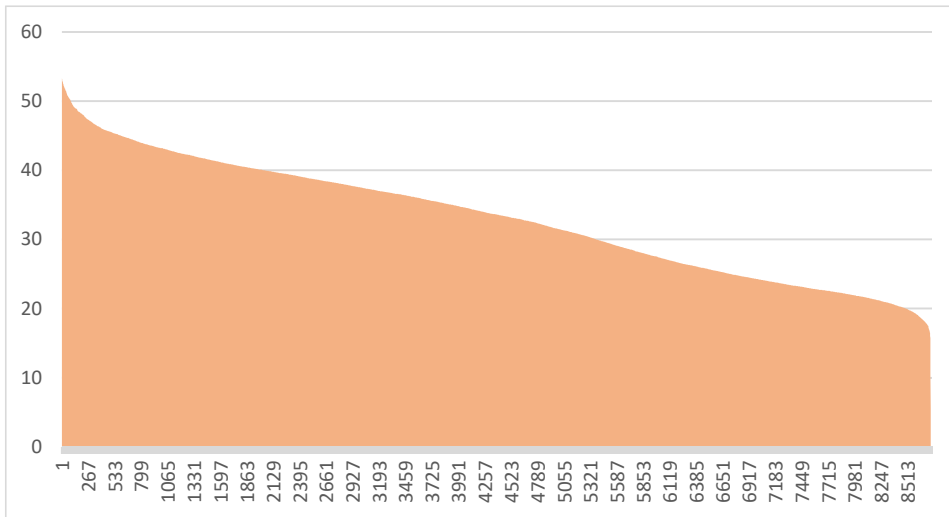


## LOAD PROFILE AND LOAD DURATION CURVE

2018 DU's Hourly Load Profile (MW)



2018 DU's Load Curve (MW)

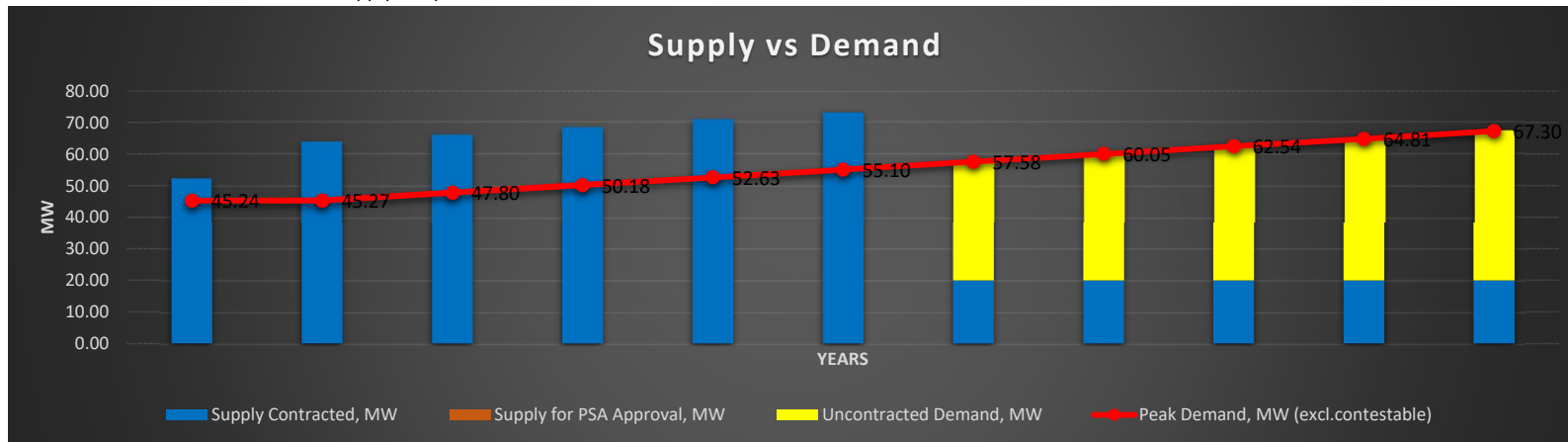


### MIXSUPPLY VS DEMAND AND THE OPTIMAL SUPPLY

| Supply Demand                             | ACTUAL | FORECAST |       |       |       |       |       |       |       |       |       |
|---|--------|----------|-------|-------|-------|-------|-------|-------|-------|-------|-------|
|   | 2018   | 2019     | 2020  | 2021  | 2022  | 2023  | 2024  | 2025  | 2026  | 2027  | 2028  |
| <b>Peak Demand, MW (excl.contestable)</b> | 45.24  | 45.27    | 47.80 | 50.18 | 52.63 | 55.10 | 57.58 | 60.05 | 62.54 | 64.81 | 67.30 |
| <b>Supply Contracted, MW</b>              | 52.42  | 63.80    | 66.00 | 68.30 | 70.80 | 73.20 | 20.00 | 20.00 | 20.00 | 20.00 | 20.00 |
| SN Aboitiz Power Inc                      | 34.63  | 43.80    | 46.00 | 48.30 | 50.80 | 53.20 |       |       |       |       |       |
| First Cabanatuan Ventures Corp. *         | 10.61  |          |       |       |       |       |       |       |       |       |       |
| CELCOR - Generation Segment **            |        | 20.00    | 20.00 | 20.00 | 20.00 | 20.00 | 20.00 | 20.00 | 20.00 | 20.00 | 20.00 |
| WESM                                      | 7.18   |          |       |       |       |       |       |       |       |       |       |
| <b>Supply for PSA Approval, MW</b>        | 0.00   | 0.00     | 0.00  | 0.00  | 0.00  | 0.00  | 0.00  | 0.00  | 0.00  | 0.00  | 0.00  |
| -   |        |          |       |       |       |       |       |       |       |       |       |
| -   |        |          |       |       |       |       |       |       |       |       |       |
| -   |        |          |       |       |       |       |       |       |       |       |       |
| <b>Uncontracted Demand, MW</b>            | 0.00   | 0.00     | 0.00  | 0.00  | 0.00  | 0.00  | 37.58 | 40.05 | 42.54 | 44.81 | 47.30 |

Note:

- \* The term of the PPA ended on July 25, 2018, the operations of the whole power plant were turned-over to CELCOR the contracted supply is equivalent to 11.75MW
- \*\* CELCOR - Generation Segment (submitted to ERC for approval to maintain and operate starting July 26, 2018) the contracted supply is equivalent to 20MW



POWER SUPPLY PROCUREMENT PLAN

List of Existing Contracts and Details

| Supply Contracted | Plant Owner/ Operator | Capacity Factor | PSA Effectivity (MM/YR) | PSA Expiration (MM/YR) | Contracted Capacity, MW | Contracted Energy, MWH | Base / Mid-merit / Peaking | Embedded/ Grid Connected | Utility-owned/ NPC/ IPP/ NPC-IPP | Status | Fuel Type | Installed Capacity (MW) | Net Dependable Capacity (MW) |
|-------------------|-----------------------|-----------------|-------------------------|------------------------|-------------------------|------------------------|----------------------------|--------------------------|----------------------------------|--------|-----------|-------------------------|------------------------------|
| GenCo 1           |                       |                 |                         |                        |                         |                        |                            |                          |                                  |        |           |                         |                              |
| GenCo 2           |                       |                 |                         |                        |                         |                        |                            |                          |                                  |        |           |                         |                              |
| GenCo 3           |                       |                 |                         |                        |                         |                        |                            |                          |                                  |        |           |                         |                              |
| GenCo 4           |                       |                 |                         |                        |                         |                        |                            |                          |                                  |        |           |                         |                              |
| GenCo 5           |                       |                 |                         |                        |                         |                        |                            |                          |                                  |        |           |                         |                              |

Discuss the following:  
 Performance of the existing Contracted Generation Companies.  
 For off-grid DUs specify the approved SAGR  
 Further, discuss the **optimal supply mix** for the DU given the load curve, performance of the existing contracted generation companies and other factors as found significant

## DISTRIBUTION IMPACT STUDY

Due to its strategic location, the city has claimed as the major economic, educational, medical, entertainment shopping and transportation center in Nueva Ecija and its nearby provinces such as Aurora and Bulacan. As being the gateway of the north, the city embraces a number of developments that must be accompanied with adequate and reliable supply of power. In such CELCOR establishes number of projects in order to provide services which in return attract economic growth. The recently applied CELCOR capital expenditure for year 2018-2020 includes power quality, network rehabilitation and upgrading, capacity augmentation and innovation and technological advancement are align with the vision of the City to promote and fuel this demand. The Company intends to allocate additional investment into our network transmission facilities and improve non-network support facilities to complement a synergistic approach to support customer requirements and constantly satisfy their expectations. The project 69KV N-1 scheme will provide reliability in terms of continuous supply as the present network being fed by a single bus scheme, which failure results to a whole power shutdown. The additional substation will provide capacity adequacy as the load growth of the franchise area are in its peak with the development and attraction of businesses. The rehabilitation and upgrading of its distribution system are targeted to continuously implement as evident with its positive results with CELCOR averaging a single digit loss which is below the system loss cap for the last five years.





## 10 Year Monthly Data

| Year        | Forecast                    |                      |                          | Contracted and For PSA Approval Demand and Energy |              | Contracted Demand and Energy |                           | Committed for CSP |              |
|-------------|-----------------------------|----------------------|--------------------------|---|--------------|------------------------------|---------------------------|-------------------|--------------|
|             | Coincident Peak Demand (MW) | Off Peak Demand (MW) | Energy Requirement (MWh) | Demand (MW)                                       | Energy (MWh) | Uncontracted Demand (MW)     | Uncontracted Energy (MWh) | Demand (MW)       | Energy (MWh) |
| <b>2019</b> |                             |                      |                          |   |              |                              |                           |                   |              |
| Jan         | 36.48                       | 31.98                | 19,278.19                | 43.80   | 16,740.00    |                              |                           |                   |              |
| Feb         | 36.55                       | 34.05                | 21,389.02                | 43.80   | 17,394.00    |                              |                           |                   |              |
| Mar         | 41.93                       | 34.73                | 20,813.70                | 43.80   | 17,256.00    |                              |                           |                   |              |
| Apr         | 43.33                       | 36.93                | 23,643.39                | 43.80   | 21,105.00    |                              |                           |                   |              |
| May         | 45.27                       | 38.07                | 24,727.17                | 43.80   | 22,553.00    |                              |                           |                   |              |
| Jun         | 43.21                       | 38.01                | 24,927.41                | 43.80   | 22,233.00    |                              |                           |                   |              |
| Jul         | 41.73                       | 37.53                | 22,017.90                | 43.80   | 19,248.00    |                              |                           |                   |              |
| Aug         | 40.24                       | 34.34                | 22,308.68                | 43.80   | 19,165.00    |                              |                           |                   |              |
| Sep         | 39.13                       | 35.93                | 21,906.21                | 43.80   | 18,564.00    |                              |                           |                   |              |
| Oct         | 39.10                       | 33.90                | 22,138.87                | 43.80   | 19,016.00    |                              |                           |                   |              |
| Nov         | 39.17                       | 34.97                | 22,274.48                | 43.80   | 19,303.00    |                              |                           |                   |              |
| Dec         | 37.30                       | 32.50                | 22,026.21                | 43.80   | 18,984.00    |                              |                           |                   |              |
| <b>2020</b> |                             |                      |                          |   |              |                              |                           |                   |              |
| Jan         | 37.83                       | 33.33                | 20,450.76                | 46.00   | 17,535.00    |                              |                           |                   |              |
| Feb         | 38.33                       | 35.83                | 21,048.34                | 46.00   | 18,221.00    |                              |                           |                   |              |
| Mar         | 43.97                       | 36.77                | 21,362.29                | 46.00   | 18,072.00    |                              |                           |                   |              |
| Apr         | 46.13                       | 39.73                | 24,603.26                | 46.00   | 22,123.00    |                              |                           |                   |              |
| May         | 47.80                       | 40.60                | 25,770.13                | 46.00   | 23,643.00    |                              |                           |                   |              |
| Jun         | 46.56                       | 41.36                | 26,209.73                | 46.00   | 23,309.00    |                              |                           |                   |              |
| Jul         | 44.49                       | 40.29                | 22,949.92                | 46.00   | 20,173.00    |                              |                           |                   |              |
| Aug         | 42.93                       | 37.03                | 23,253.36                | 46.00   | 20,087.00    |                              |                           |                   |              |
| Sep         | 41.91                       | 38.71                | 22,911.51                | 46.00   | 19,456.00    |                              |                           |                   |              |
| Oct         | 41.75                       | 36.55                | 23,080.42                | 46.00   | 19,925.00    |                              |                           |                   |              |
| Nov         | 41.84                       | 37.64                | 23,237.93                | 46.00   | 20,228.00    |                              |                           |                   |              |
| Dec         | 39.86                       | 35.06                | 22,970.83                | 46.00   | 19,892.00    |                              |                           |                   |              |
| <b>2021</b> |                             |                      |                          |   |              |                              |                           |                   |              |
| Jan         | 41.58                       | 37.08                | 23,986.20                | 48.30   | 18,372.00    |                              |                           |                   |              |
| Feb         | 40.66                       | 36.16                | 23,898.37                | 48.30   | 19,090.00    |                              |                           |                   |              |
| Mar         | 47.26                       | 44.76                | 24,447.67                | 48.30   | 18,930.00    |                              |                           |                   |              |
| Apr         | 48.85                       | 41.65                | 27,900.95                | 48.30   | 23,194.00    |                              |                           |                   |              |
| May         | 50.18                       | 43.78                | 28,743.21                | 48.30   | 24,790.00    |                              |                           |                   |              |
| Jun         | 47.38                       | 40.18                | 28,641.07                | 48.30   | 24,441.00    |                              |                           |                   |              |
| Jul         | 48.53                       | 43.33                | 26,766.62                | 48.30   | 21,146.00    |                              |                           |                   |              |
| Aug         | 46.43                       | 42.23                | 26,886.80                | 48.30   | 21,057.00    |                              |                           |                   |              |
| Sep         | 44.96                       | 39.06                | 26,289.12                | 48.30   | 20,394.00    |                              |                           |                   |              |
| Oct         | 43.10                       | 39.90                | 25,558.81                | 48.30   | 20,882.00    |                              |                           |                   |              |
| Nov         | 44.12                       | 38.92                | 26,248.63                | 48.30   | 21,201.00    |                              |                           |                   |              |
| Dec         | 39.89                       | 35.69                | 24,715.46                | 48.30   | 20,848.00    |                              |                           |                   |              |
| <b>2022</b> |                             |                      |                          |   |              |                              |                           |                   |              |
| Jan         | 43.90                       | 39.40                | 23,261.87                | 50.80   | 19,252.00    |                              |                           |                   |              |
| Feb         | 42.94                       | 40.44                | 23,181.53                | 50.80   | 20,005.00    |                              |                           |                   |              |
| Mar         | 49.80                       | 42.60                | 23,683.95                | 50.80   | 19,833.00    |                              |                           |                   |              |
| Apr         | 51.10                       | 44.70                | 26,842.52                | 50.80   | 24,320.00    |                              |                           |                   |              |
| May         | 52.63                       | 45.43                | 27,704.12                | 50.80   | 25,997.00    |                              |                           |                   |              |
| Jun         | 49.53                       | 44.33                | 27,519.48                | 50.80   | 25,631.00    |                              |                           |                   |              |
| Jul         | 50.86                       | 46.66                | 25,804.99                | 50.80   | 22,169.00    |                              |                           |                   |              |
| Aug         | 48.67                       | 42.77                | 25,914.92                | 50.80   | 22,077.00    |                              |                           |                   |              |
| Sep         | 47.21                       | 44.01                | 25,368.24                | 50.80   | 21,381.00    |                              |                           |                   |              |

POWER SUPPLY PROCUREMENT PLAN

|      |       |       |           |       |           |  |  |  |  |
|------|-------|-------|-----------|-------|-----------|--|--|--|--|
| Oct  | 45.34 | 40.14 | 24,700.27 | 50.80 | 21,888.00 |  |  |  |  |
| Nov  | 46.33 | 42.13 | 25,331.22 | 50.80 | 22,225.00 |  |  |  |  |
| Dec  | 42.08 | 37.28 | 23,928.88 | 50.80 | 21,853.00 |  |  |  |  |
| 2023 |       |       |           |       |           |  |  |  |  |
| Jan  | 46.01 | 41.51 | 24,415.50 | 53.20 | 20,178.00 |  |  |  |  |
| Feb  | 45.00 | 42.50 | 24,335.72 | 53.20 | 20,967.00 |  |  |  |  |
| Mar  | 51.81 | 44.61 | 24,834.68 | 53.20 | 20,783.00 |  |  |  |  |
| Apr  | 53.58 | 47.18 | 28,198.01 | 53.20 | 25,505.00 |  |  |  |  |
| May  | 55.10 | 47.90 | 29,053.69 | 53.20 | 27,266.00 |  |  |  |  |
| Jun  | 51.45 | 46.25 | 28,643.83 | 53.20 | 26,883.00 |  |  |  |  |
| Jul  | 52.95 | 48.75 | 26,941.13 | 53.20 | 23,245.00 |  |  |  |  |
| Aug  | 50.69 | 44.79 | 27,050.30 | 53.20 | 23,150.00 |  |  |  |  |
| Sep  | 49.22 | 46.02 | 26,507.39 | 53.20 | 22,419.00 |  |  |  |  |
| Oct  | 47.36 | 42.16 | 25,844.01 | 53.20 | 22,946.00 |  |  |  |  |
| Nov  | 48.31 | 44.11 | 26,470.62 | 53.20 | 23,302.00 |  |  |  |  |
| Dec  | 44.06 | 39.26 | 25,077.93 | 53.20 | 22,910.00 |  |  |  |  |
| 2024 |       |       |           |       |           |  |  |  |  |
| Jan  | 48.21 | 43.71 | 25,488.67 |       |           |  |  |  |  |
| Feb  | 47.16 | 44.66 | 25,409.77 |       |           |  |  |  |  |
| Mar  | 54.21 | 47.01 | 25,903.20 |       |           |  |  |  |  |
| Apr  | 56.24 | 49.84 | 29,498.02 |       |           |  |  |  |  |
| May  | 57.58 | 50.38 | 30,254.61 |       |           |  |  |  |  |
| Jun  | 53.81 | 48.61 | 29,849.30 |       |           |  |  |  |  |
| Jul  | 55.15 | 50.95 | 27,986.30 |       |           |  |  |  |  |
| Aug  | 52.80 | 46.90 | 28,094.26 |       |           |  |  |  |  |
| Sep  | 51.34 | 48.14 | 27,557.37 |       |           |  |  |  |  |
| Oct  | 49.48 | 44.28 | 26,901.34 |       |           |  |  |  |  |
| Nov  | 50.39 | 46.19 | 27,521.00 |       |           |  |  |  |  |
| Dec  | 46.13 | 41.33 | 26,143.76 |       |           |  |  |  |  |
| 2025 |       |       |           |       |           |  |  |  |  |
| Jan  | 50.49 | 45.99 | 26,496.60 |       |           |  |  |  |  |
| Feb  | 49.40 | 46.90 | 26,418.82 |       |           |  |  |  |  |
| Mar  | 56.98 | 49.78 | 26,905.26 |       |           |  |  |  |  |
| Apr  | 58.88 | 52.48 | 30,669.96 |       |           |  |  |  |  |
| May  | 60.05 | 52.85 | 31,327.52 |       |           |  |  |  |  |
| Jun  | 56.17 | 50.97 | 30,927.94 |       |           |  |  |  |  |
| Jul  | 57.44 | 53.24 | 28,958.85 |       |           |  |  |  |  |
| Aug  | 55.00 | 49.10 | 29,065.28 |       |           |  |  |  |  |
| Sep  | 53.54 | 50.34 | 28,536.00 |       |           |  |  |  |  |
| Oct  | 51.67 | 46.47 | 27,889.26 |       |           |  |  |  |  |
| Nov  | 52.54 | 48.34 | 28,500.14 |       |           |  |  |  |  |
| Dec  | 48.27 | 43.47 | 27,142.41 |       |           |  |  |  |  |
| 2026 |       |       |           |       |           |  |  |  |  |
| Jan  | 52.78 | 48.28 | 27,581.98 |       |           |  |  |  |  |
| Feb  | 51.64 | 49.14 | 27,504.99 |       |           |  |  |  |  |
| Mar  | 59.48 | 52.28 | 27,986.48 |       |           |  |  |  |  |
| Apr  | 61.54 | 55.14 | 31,931.42 |       |           |  |  |  |  |
| May  | 62.54 | 55.34 | 32,494.86 |       |           |  |  |  |  |
| Jun  | 58.54 | 53.34 | 32,099.35 |       |           |  |  |  |  |
| Jul  | 59.74 | 55.54 | 30,019.17 |       |           |  |  |  |  |
| Aug  | 57.22 | 51.32 | 30,124.52 |       |           |  |  |  |  |
| Sep  | 55.76 | 52.56 | 29,600.62 |       |           |  |  |  |  |
| Oct  | 53.88 | 48.68 | 28,960.46 |       |           |  |  |  |  |
| Nov  | 54.72 | 50.52 | 29,565.13 |       |           |  |  |  |  |
| Dec  | 50.43 | 45.63 | 28,221.21 |       |           |  |  |  |  |
| 2027 |       |       |           |       |           |  |  |  |  |
| Jan  | 54.86 | 50.36 | 28,664.03 |       |           |  |  |  |  |
| Feb  | 53.68 | 51.18 | 28,584.08 |       |           |  |  |  |  |

POWER SUPPLY PROCUREMENT PLAN

|      |       |       |           |  |  |  |  |  |  |
|------|-------|-------|-----------|--|--|--|--|--|--|
| Mar  | 61.78 | 54.58 | 29,077.20 |  |  |  |  |  |  |
| Apr  | 63.92 | 57.52 | 33,173.58 |  |  |  |  |  |  |
| May  | 64.81 | 57.61 | 33,760.77 |  |  |  |  |  |  |
| Jun  | 60.83 | 55.63 | 33,348.08 |  |  |  |  |  |  |
| Jul  | 62.06 | 57.86 | 31,195.80 |  |  |  |  |  |  |
| Aug  | 59.47 | 53.57 | 31,306.68 |  |  |  |  |  |  |
| Sep  | 57.96 | 54.76 | 30,764.13 |  |  |  |  |  |  |
| Oct  | 56.02 | 50.82 | 30,095.89 |  |  |  |  |  |  |
| Nov  | 56.87 | 52.67 | 30,722.89 |  |  |  |  |  |  |
| Dec  | 52.46 | 47.66 | 29,329.77 |  |  |  |  |  |  |
| 2028 |       |       |           |  |  |  |  |  |  |
| Jan  | 56.80 | 52.30 | 29,772.83 |  |  |  |  |  |  |
| Feb  | 55.58 | 53.08 | 29,689.72 |  |  |  |  |  |  |
| Mar  | 64.01 | 56.81 | 30,209.46 |  |  |  |  |  |  |
| Apr  | 66.23 | 59.83 | 34,467.74 |  |  |  |  |  |  |
| May  | 67.30 | 60.10 | 35,075.94 |  |  |  |  |  |  |
| Jun  | 63.00 | 57.80 | 34,649.02 |  |  |  |  |  |  |
| Jul  | 64.29 | 60.09 | 32,403.61 |  |  |  |  |  |  |
| Aug  | 61.58 | 55.68 | 32,517.32 |  |  |  |  |  |  |
| Sep  | 60.00 | 56.80 | 31,951.81 |  |  |  |  |  |  |
| Oct  | 57.99 | 52.79 | 31,260.80 |  |  |  |  |  |  |
| Nov  | 58.89 | 54.69 | 31,913.50 |  |  |  |  |  |  |
| Dec  | 54.27 | 49.47 | 30,462.84 |  |  |  |  |  |  |