

# OVERVIEW OF RE PROGRAMS

**Director Mylene C. Capongcol**  
*Renewable Energy Management Bureau*  
*Department of Energy*



**e – POWER MO**

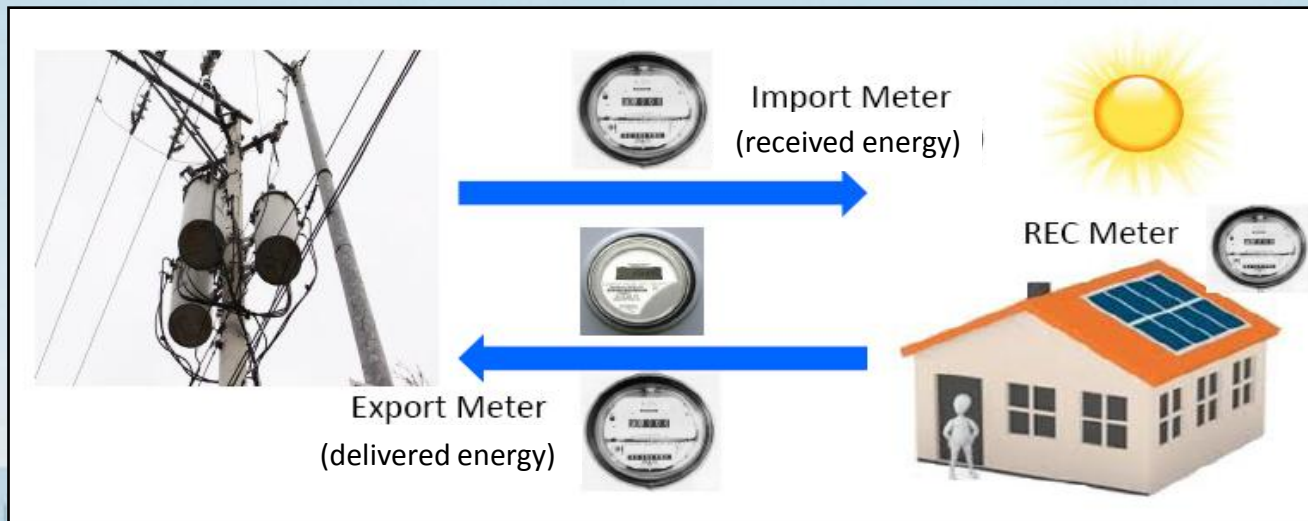
- e – Secure Mo
- e – Safety Mo
- e – Diskarte Mo



## Net Metering Program

- ✓ A Renewable Energy Policy Mechanism which shall provide consumers to produce its own electricity requirement with maximum capacity of 100 kW.

### Interconnection Set-up



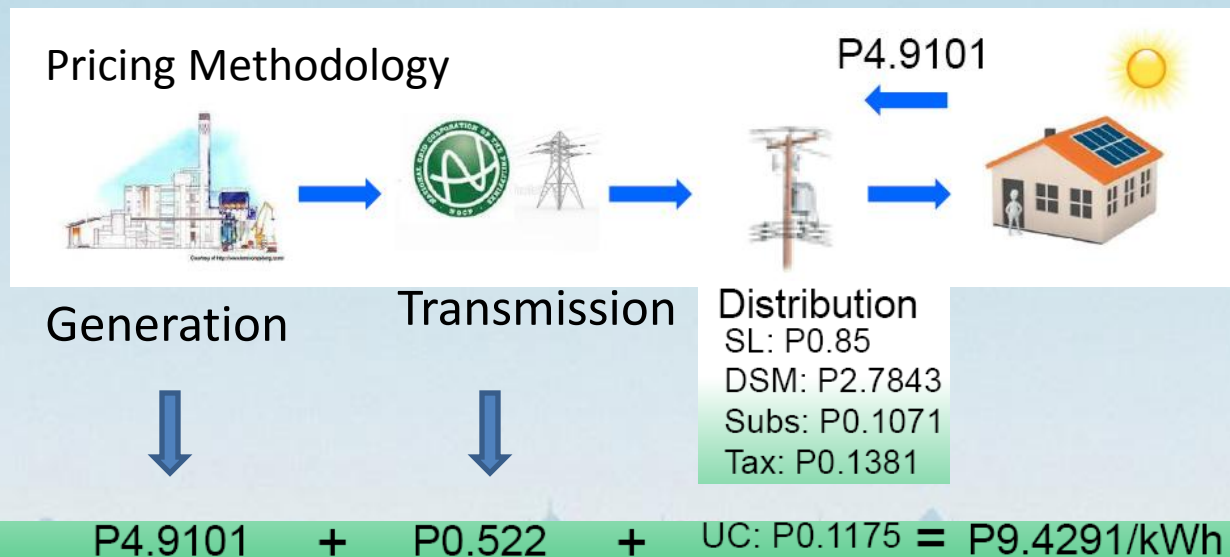
 Power of Choice



# e – POWER MO

## Net Metering Program

- ✓ A Renewable Energy Policy Mechanism which shall provide consumers to produce its own electricity requirement with maximum capacity of 100 kW.

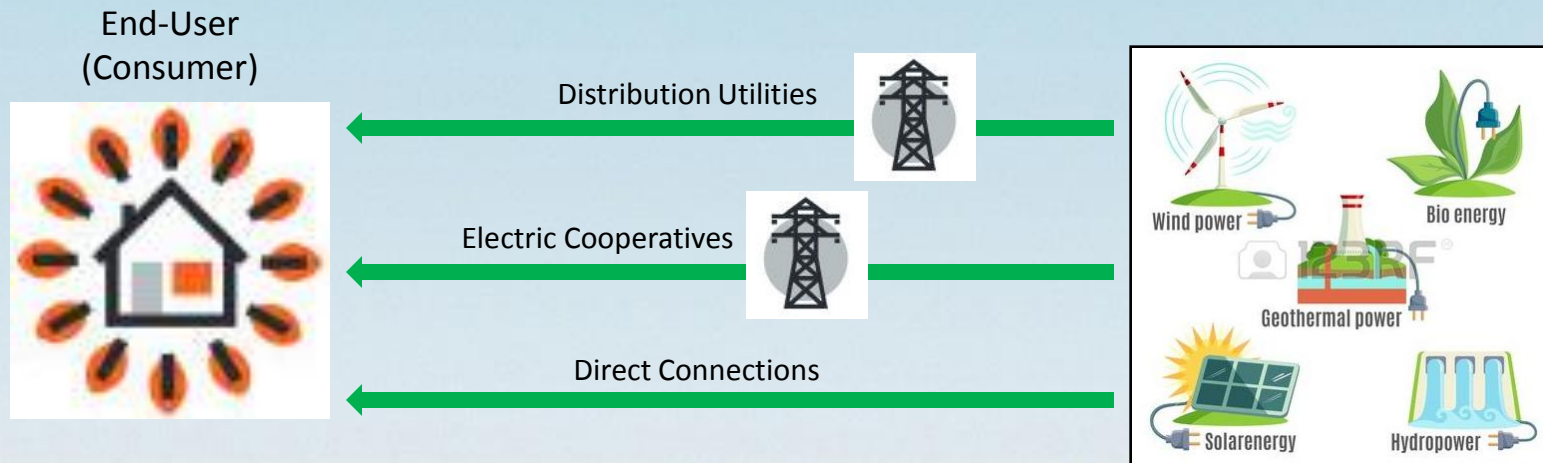


 Power of Choice



## Green Energy Option Program

- ✓ A Renewable Energy Policy Mechanism which shall provide end-user the option to choose RE Resources as their source of Energy.

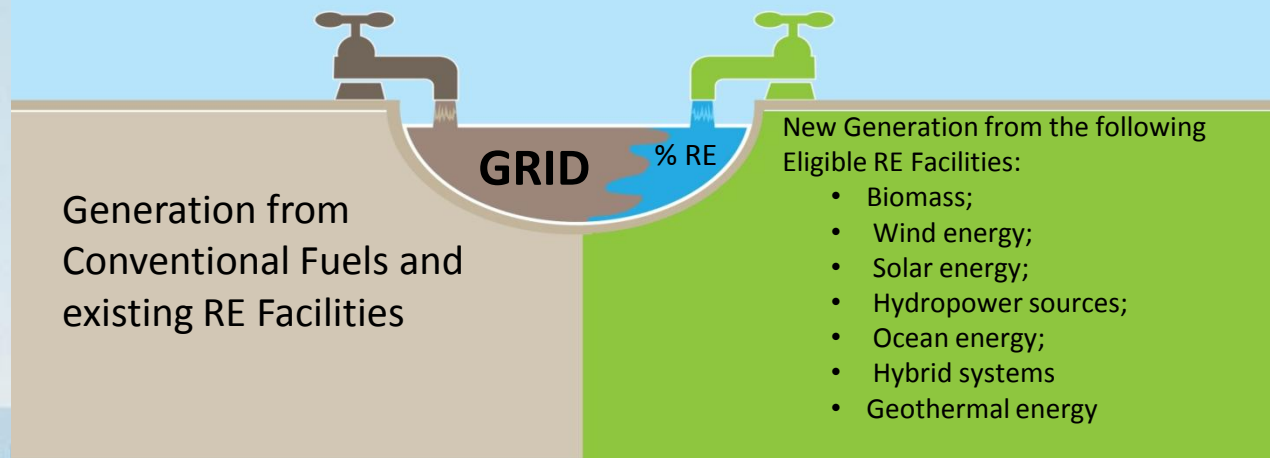


 Power of Choice

## Renewable Portfolio Standards (RPS)

- ✓ Mandated Renewable Energy electricity blend to the total supply of electricity for on-grid and off-grid areas.

**Will Create Market for Renewable Energy**



 **Power of Choice**



# Thank You!

## *e-Diskarte Mo!*

## **#KuryenteMo**

## **#eRenewableMo**



(+632) 479-2900



mylene.capongcol@doe.gov.ph



www.doe.gov.ph



//doe.gov.ph



@doe\_ph

