

# **Power Supply Procurement Plan 2021**

**ALIGUAY**

**(ZANECO)**

## Historical Consumption Data

	Coincident Peak MW	MWh Offtake	WESM	MWh Input	MWh Output	MWh System Loss	Load Factor	Discrepancy	Transm'n Loss	System Loss
2000	0.00	0	0	0	0	0	0%	0%	0%	0%
2001	0.00	0	0	0	0	0	0%	0%	0%	0%
2002	0.00	0	0	0	0	0	0%	0%	0%	0%
2003	0.00	0	0	0	0	0	0%	0%	0%	0%
2004	0.00	0	0	0	0	0	0%	0%	0%	0%
2005	0.00	0	0	0	0	0	0%	0%	0%	0%
2006	0.00	0	0	0	0	0	0%	0%	0%	0%
2007	0.00	0	0	0	0	0	0%	0%	0%	0%
2008	0.00	0	0	0	0	0	0%	0%	0%	0%
2009	0.00	0	0	0	0	0	0%	0%	0%	0%
2010	0.00	0	0	0	0	0	0%	0%	0%	0%
2011	0.00	0	0	0	0	0	0%	0%	0%	0%
2012	0.00	0	0	0	0	0	0%	0%	0%	0%
2013	0.00	0	0	0	0	0	0%	0%	0%	0%
2014	0.00	0	0	0	0	0	0%	0%	0%	0%
2015	0.00	0	0	0	0	0	0%	0%	0%	0%
2016	0.00	0	0	0	0	0	0%	0%	0%	0%
2017	0.00	0	0	0	0	0	0%	0%	0%	0%
2018	0.00	0	0	0	0	0	0%	0%	0%	0%
2019	0.00	0	0	0	0	0	0%	0%	0%	0%
2020	0.00	0	0	0	0	0	0%	0%	0%	0%

Since the Island of Aliguay is not yet energized, there is no available historical data that can be provided.



## **Previous Year's Load Profile**

The previous year's load profile and load curve is not available because it has no historical data.

## Forecasted Consumption Data

		Coincident Peak MW	Contracted MW	Pending MW	Planned MW	Retail Electricity Suppliers MW	Existing Contracting Level	Target Contracting Level	MW Surplus / Deficit
2021	Jan		0.00	0.00	0.000		0%	0%	0.00
	Feb		0.00	0.00	0.000		0%	0%	0.00
	Mar		0.00	0.00	0.000		0%	0%	0.00
	Apr		0.00	0.00	0.000		0%	0%	0.00
	May		0.00	0.00	0.000		0%	0%	0.00
	Jun		0.00	0.00	0.000		0%	0%	0.00
	Jul		0.00	0.00	0.000		0%	0%	0.00
	Aug		0.00	0.00	0.000		0%	0%	0.00
	Sep		0.00	0.00	0.000		0%	0%	0.00
	Oct		0.00	0.00	0.000		0%	0%	0.00
	Nov		0.00	0.00	0.000		0%	0%	0.00
	Dec		0.00	0.00	0.000		0%	0%	0.00
2022	Jan		0.00	0.00	0.000		0%	0%	0.00
	Feb		0.00	0.00	0.000		0%	0%	0.00
	Mar		0.00	0.00	0.000		0%	0%	0.00
	Apr		0.00	0.00	0.000		0%	0%	0.00
	May		0.00	0.00	0.000		0%	0%	0.00
	Jun		0.00	0.00	0.000		0%	0%	0.00
	Jul	0.75	0.00	0.00	1.000		0%	133%	0.25
	Aug	0.78	0.00	0.00	1.000		0%	128%	0.22
	Sep	0.72	0.00	0.00	1.000		0%	139%	0.28
	Oct	0.73	0.00	0.00	1.000		0%	137%	0.27
	Nov	0.76	0.00	0.00	1.000		0%	131%	0.24
	Dec	0.79	0.00	0.00	1.000		0%	126%	0.21
2023	Jan	0.70	0.00	0.00	1.000		0%	143%	0.30
	Feb	0.72	0.00	0.00	1.000		0%	139%	0.28
	Mar	0.73	0.00	0.00	1.000		0%	138%	0.28
	Apr	0.74	0.00	0.00	1.000		0%	136%	0.27
	May	0.74	0.00	0.00	1.000		0%	136%	0.26

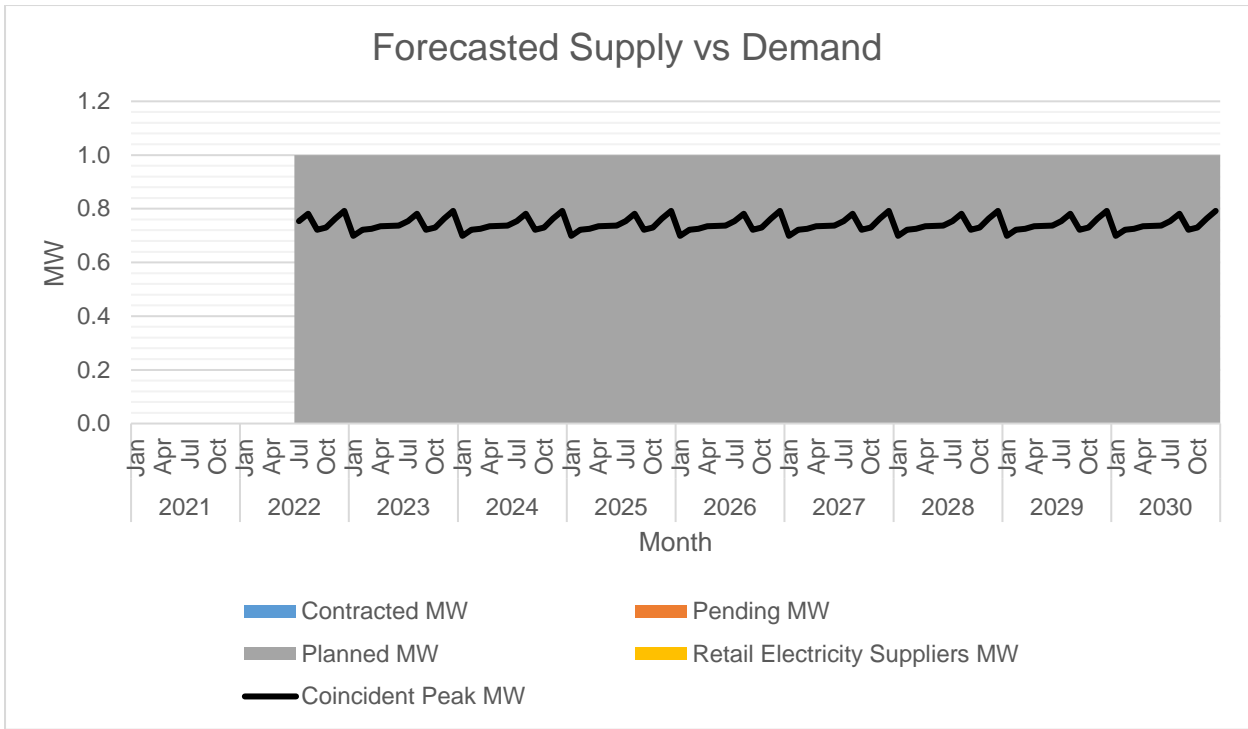
	Jun	0.74	0.00	0.00	1.000		0%	136%	0.26
	Jul	0.75	0.00	0.00	1.000		0%	133%	0.25
	Aug	0.78	0.00	0.00	1.000		0%	128%	0.22
	Sep	0.72	0.00	0.00	1.000		0%	139%	0.28
	Oct	0.73	0.00	0.00	1.000		0%	137%	0.27
	Nov	0.76	0.00	0.00	1.000		0%	131%	0.24
	Dec	0.79	0.00	0.00	1.000		0%	126%	0.21
2024	Jan	0.70	0.00	0.00	1.000		0%	143%	0.30
	Feb	0.72	0.00	0.00	1.000		0%	139%	0.28
	Mar	0.73	0.00	0.00	1.000		0%	138%	0.28
	Apr	0.74	0.00	0.00	1.000		0%	136%	0.27
	May	0.74	0.00	0.00	1.000		0%	136%	0.26
	Jun	0.74	0.00	0.00	1.000		0%	136%	0.26
	Jul	0.75	0.00	0.00	1.000		0%	133%	0.25
	Aug	0.78	0.00	0.00	1.000		0%	128%	0.22
	Sep	0.72	0.00	0.00	1.000		0%	139%	0.28
	Oct	0.73	0.00	0.00	1.000		0%	137%	0.27
	Nov	0.76	0.00	0.00	1.000		0%	131%	0.24
	Dec	0.79	0.00	0.00	1.000		0%	126%	0.21
2025	Jan	0.70	0.00	0.00	1.000		0%	143%	0.30
	Feb	0.72	0.00	0.00	1.000		0%	139%	0.28
	Mar	0.73	0.00	0.00	1.000		0%	138%	0.28
	Apr	0.74	0.00	0.00	1.000		0%	136%	0.27
	May	0.74	0.00	0.00	1.000		0%	136%	0.26
	Jun	0.74	0.00	0.00	1.000		0%	136%	0.26
	Jul	0.75	0.00	0.00	1.000		0%	133%	0.25
	Aug	0.78	0.00	0.00	1.000		0%	128%	0.22
	Sep	0.72	0.00	0.00	1.000		0%	139%	0.28
	Oct	0.73	0.00	0.00	1.000		0%	137%	0.27
	Nov	0.76	0.00	0.00	1.000		0%	131%	0.24
	Dec	0.79	0.00	0.00	1.000		0%	126%	0.21
2026	Jan	0.70	0.00	0.00	1.000		0%	143%	0.30
	Feb	0.72	0.00	0.00	1.000		0%	139%	0.28
	Mar	0.73	0.00	0.00	1.000		0%	138%	0.28
	Apr	0.74	0.00	0.00	1.000		0%	136%	0.27

	May	0.74	0.00	0.00	1.000		0%	136%	0.26
	Jun	0.74	0.00	0.00	1.000		0%	136%	0.26
	Jul	0.75	0.00	0.00	1.000		0%	133%	0.25
	Aug	0.78	0.00	0.00	1.000		0%	128%	0.22
	Sep	0.72	0.00	0.00	1.000		0%	139%	0.28
	Oct	0.73	0.00	0.00	1.000		0%	137%	0.27
	Nov	0.76	0.00	0.00	1.000		0%	131%	0.24
	Dec	0.79	0.00	0.00	1.000		0%	126%	0.21
2027	Jan	0.70	0.00	0.00	1.000		0%	143%	0.30
	Feb	0.72	0.00	0.00	1.000		0%	139%	0.28
	Mar	0.73	0.00	0.00	1.000		0%	138%	0.28
	Apr	0.74	0.00	0.00	1.000		0%	136%	0.27
	May	0.74	0.00	0.00	1.000		0%	136%	0.26
	Jun	0.74	0.00	0.00	1.000		0%	136%	0.26
	Jul	0.75	0.00	0.00	1.000		0%	133%	0.25
	Aug	0.78	0.00	0.00	1.000		0%	128%	0.22
	Sep	0.72	0.00	0.00	1.000		0%	139%	0.28
	Oct	0.73	0.00	0.00	1.000		0%	137%	0.27
	Nov	0.76	0.00	0.00	1.000		0%	131%	0.24
	Dec	0.79	0.00	0.00	1.000		0%	126%	0.21
2028	Jan	0.70	0.00	0.00	1.000		0%	143%	0.30
	Feb	0.72	0.00	0.00	1.000		0%	139%	0.28
	Mar	0.73	0.00	0.00	1.000		0%	138%	0.28
	Apr	0.74	0.00	0.00	1.000		0%	136%	0.27
	May	0.74	0.00	0.00	1.000		0%	136%	0.26
	Jun	0.74	0.00	0.00	1.000		0%	136%	0.26
	Jul	0.75	0.00	0.00	1.000		0%	133%	0.25
	Aug	0.78	0.00	0.00	1.000		0%	128%	0.22
	Sep	0.72	0.00	0.00	1.000		0%	139%	0.28
	Oct	0.73	0.00	0.00	1.000		0%	137%	0.27
	Nov	0.76	0.00	0.00	1.000		0%	131%	0.24
	Dec	0.79	0.00	0.00	1.000		0%	126%	0.21
2029	Jan	0.70	0.00	0.00	1.000		0%	143%	0.30
	Feb	0.72	0.00	0.00	1.000		0%	139%	0.28
	Mar	0.73	0.00	0.00	1.000		0%	138%	0.28

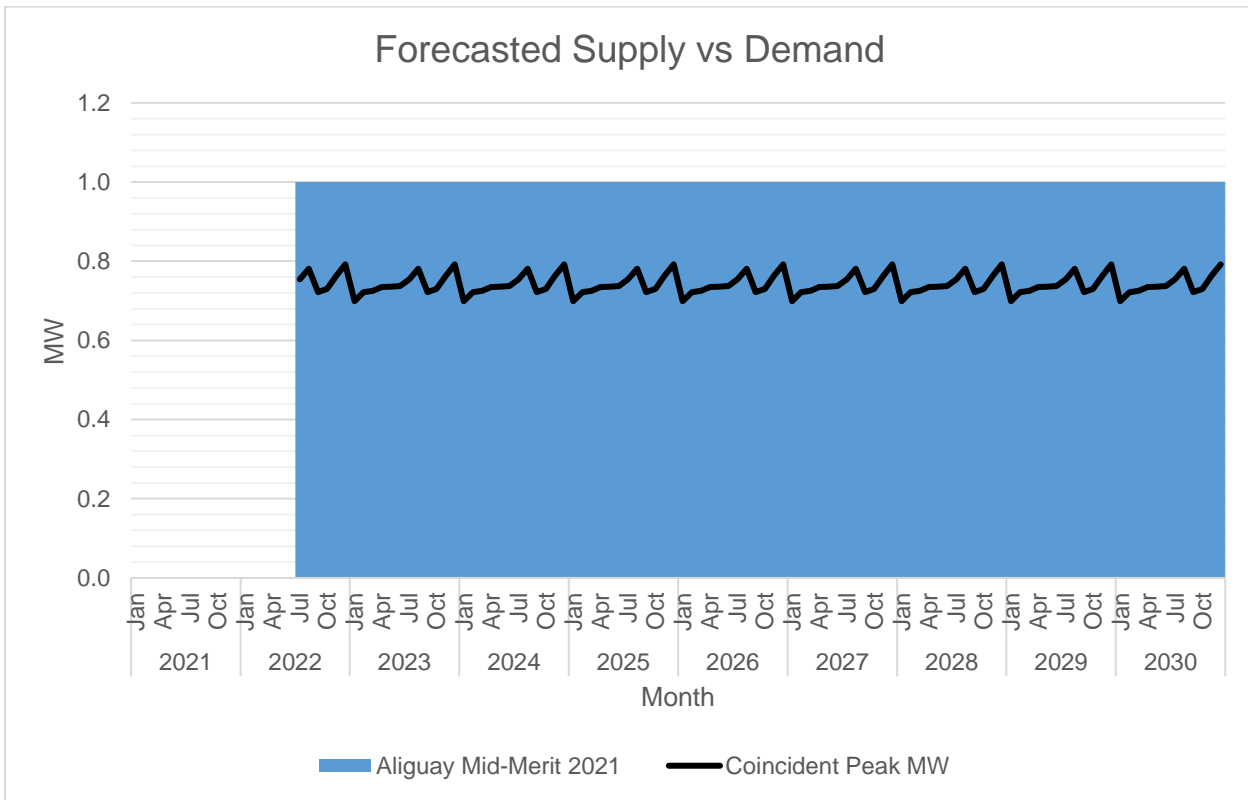
	Apr	0.74	0.00	0.00	1.000		0%	136%	0.27
	May	0.74	0.00	0.00	1.000		0%	136%	0.26
	Jun	0.74	0.00	0.00	1.000		0%	136%	0.26
	Jul	0.75	0.00	0.00	1.000		0%	133%	0.25
	Aug	0.78	0.00	0.00	1.000		0%	128%	0.22
	Sep	0.72	0.00	0.00	1.000		0%	139%	0.28
	Oct	0.73	0.00	0.00	1.000		0%	137%	0.27
	Nov	0.76	0.00	0.00	1.000		0%	131%	0.24
	Dec	0.79	0.00	0.00	1.000		0%	126%	0.21
2030	Jan	0.70	0.00	0.00	1.000		0%	143%	0.30
	Feb	0.72	0.00	0.00	1.000		0%	139%	0.28
	Mar	0.73	0.00	0.00	1.000		0%	138%	0.28
	Apr	0.74	0.00	0.00	1.000		0%	136%	0.27
	May	0.74	0.00	0.00	1.000		0%	136%	0.26
	Jun	0.74	0.00	0.00	1.000		0%	136%	0.26
	Jul	0.75	0.00	0.00	1.000		0%	133%	0.25
	Aug	0.78	0.00	0.00	1.000		0%	128%	0.22
	Sep	0.72	0.00	0.00	1.000		0%	139%	0.28
	Oct	0.73	0.00	0.00	1.000		0%	137%	0.27
	Nov	0.76	0.00	0.00	1.000		0%	131%	0.24
	Dec	0.79	0.00	0.00	1.000		0%	126%	0.21

The Peak Demand was forecasted using Short Term Load Forecasting using Seasonal Effects and was assumed to occur on the month of December due to Christmas season. Monthly Peak Demand is at its lowest on the month to its first month of the year. The data given was base from the actual survey of the island potential consumers with a growth rate of 1.11% annually.

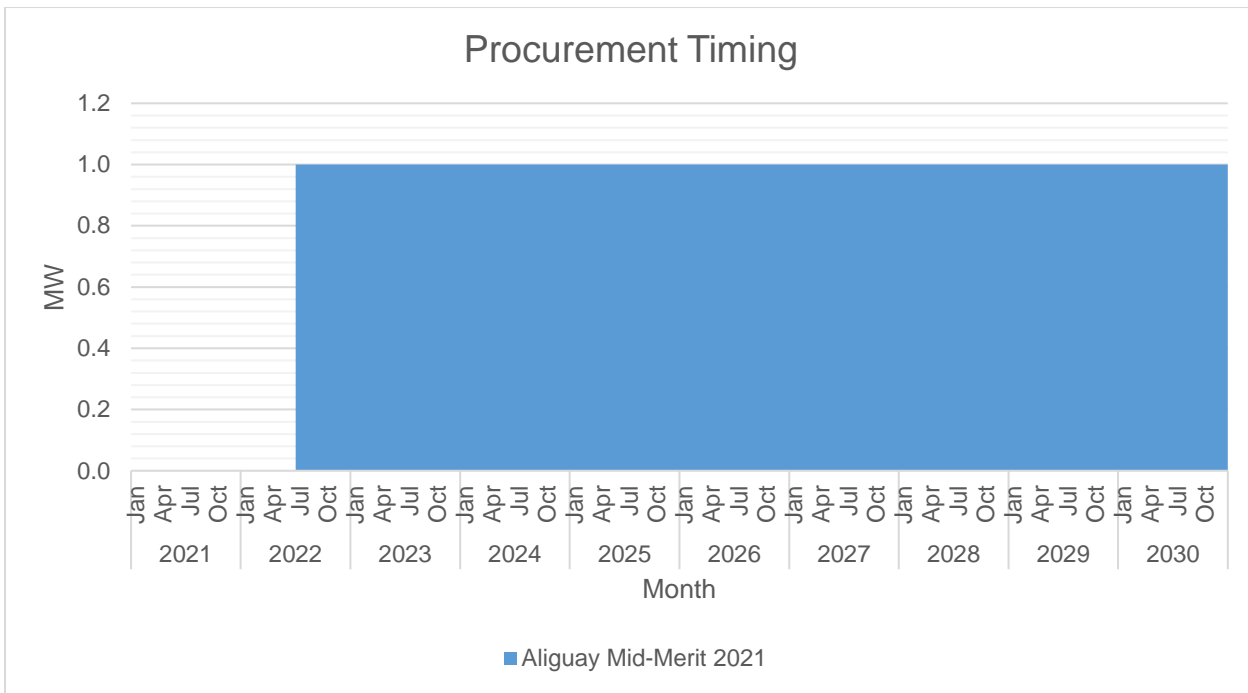




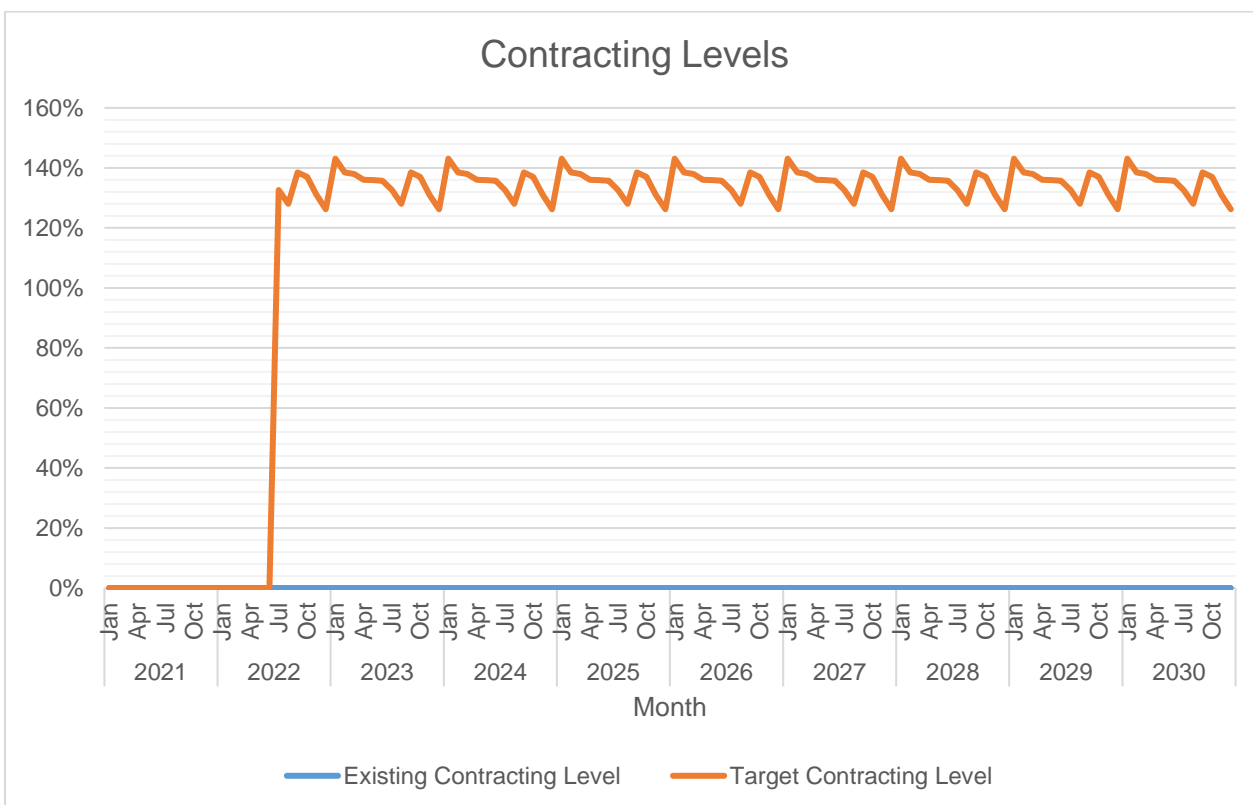
The available supply is generally above the Peak Demand. This is to ensure capacity for unprecedented potential new connections.



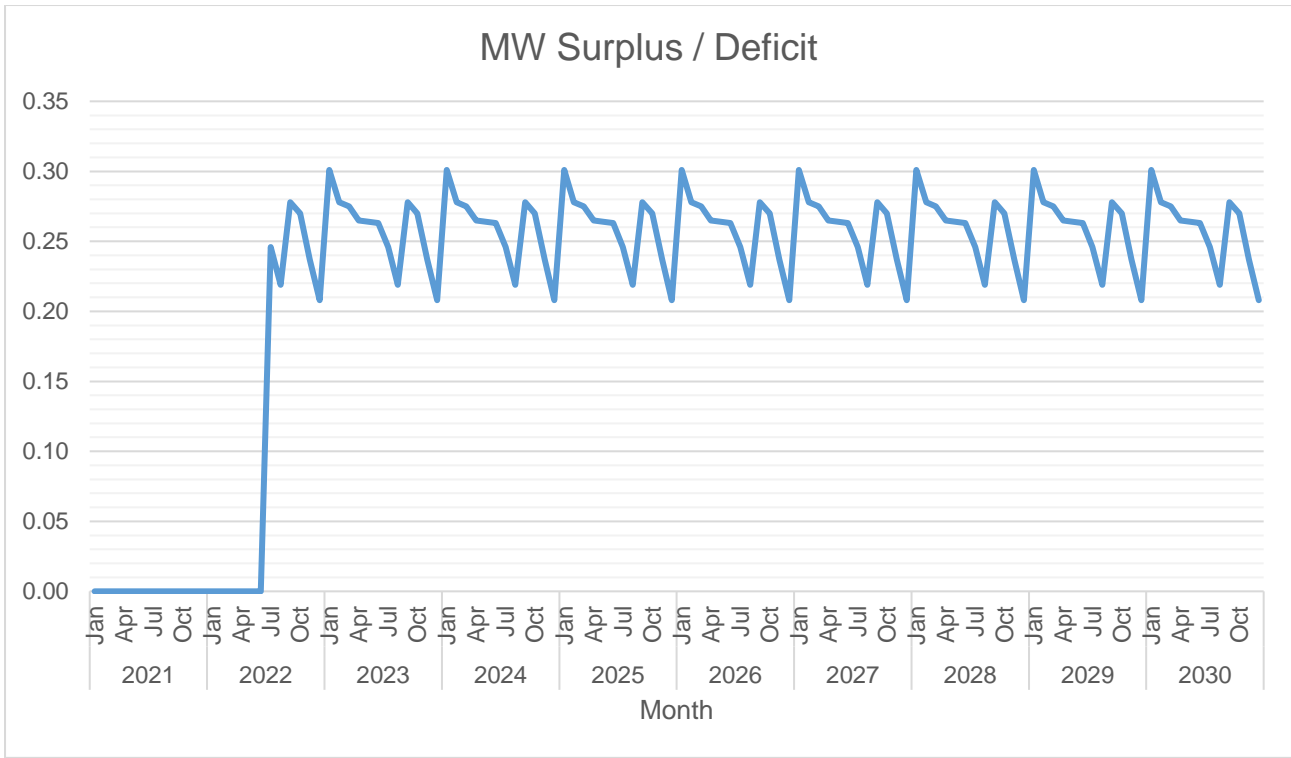
There is only one available supply which is subject for CSP this year 2021 with one (1) MW from a mid-merit power plant.



The first wave of supply procurement will be for 1 MW planned to be available by the month of July 2022.



Currently, there is no existing power supply contracts. The highest target contracting level is 143% which is expected to occur on the month of January. The lowest target contracting level is 126% which is expected to occur on the month of December.



Currently, there is no existing power supply contracts. The highest surplus is 0.30 MW which is expected to occur on the month of January. The lowest surplus is 0.21 MW which is expected to occur on the month of December.

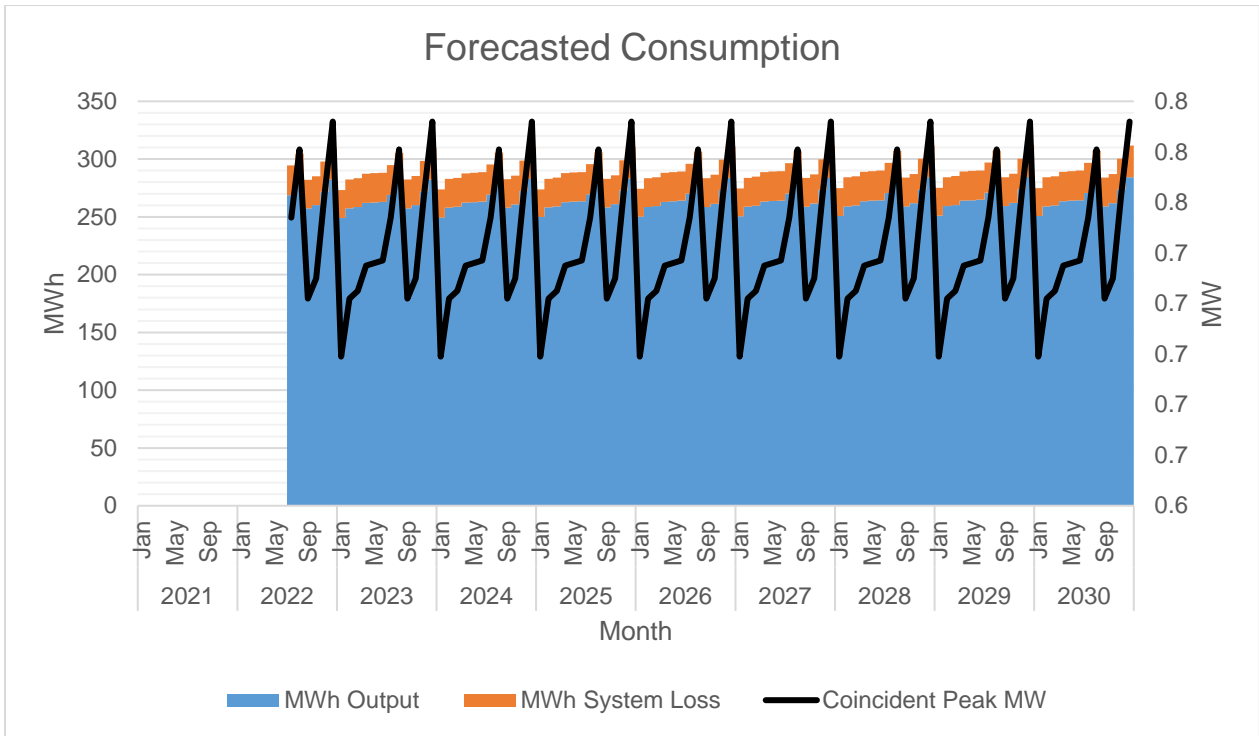
		MWh Offtake	MWh Output	MWh System Loss	Transm'n Loss	System Loss
2021	Jan	0	0	0	0.00%	0.00%
	Feb	0	0	0	0.00%	0.00%
	Mar	0	0	0	0.00%	0.00%
	Apr	0	0	0	0.00%	0.00%
	May	0	0	0	0.00%	0.00%
	Jun	0	0	0	0.00%	0.00%
	Jul	0	0	0	0.00%	0.00%
	Aug	0	0	0	0.00%	0.00%
	Sep	0	0	0	0.00%	0.00%
	Oct	0	0	0	0.00%	0.00%
	Nov	0	0	0	0.00%	0.00%
	Dec	0	0	0	0.00%	0.00%
2022	Jan	0	0	0	0.00%	0.00%
	Feb	0	0	0	0.00%	0.00%
	Mar	0	0	0	0.00%	0.00%
	Apr	0	0	0	0.00%	0.00%
	May	0	0	0	0.00%	0.00%
	Jun	0	0	0	0.00%	0.00%
	Jul	295	269	26	0.00%	8.75%
	Aug	305	278	27	0.00%	8.75%
	Sep	282	257	25	0.00%	8.75%
	Oct	285	260	25	0.00%	8.75%
	Nov	298	272	26	0.00%	8.75%
	Dec	309	282	27	0.00%	8.75%
2023	Jan	273	249	24	0.00%	8.81%

	Feb	282	258	25	0.00%	8.81%
	Mar	283	258	25	0.00%	8.81%
	Apr	287	262	25	0.00%	8.81%
	May	288	262	25	0.00%	8.81%
	Jun	288	263	25	0.00%	8.81%
	Jul	295	269	26	0.00%	8.81%
	Aug	305	278	27	0.00%	8.81%
	Sep	282	257	25	0.00%	8.81%
	Oct	285	260	25	0.00%	8.81%
	Nov	298	272	26	0.00%	8.81%
	Dec	310	282	27	0.00%	8.81%
2024	Jan	274	250	24	0.00%	8.81%
	Feb	283	258	25	0.00%	8.81%
	Mar	284	259	25	0.00%	8.81%
	Apr	288	262	25	0.00%	8.81%
	May	288	263	25	0.00%	8.81%
	Jun	289	263	25	0.00%	8.81%
	Jul	295	269	26	0.00%	8.81%
	Aug	306	279	27	0.00%	8.81%
	Sep	283	258	25	0.00%	8.81%
	Oct	286	261	25	0.00%	8.81%
	Nov	299	272	26	0.00%	8.81%
	Dec	310	283	27	0.00%	8.81%
2025	Jan	274	250	24	0.00%	8.75%
	Feb	283	258	25	0.00%	8.75%
	Mar	284	259	25	0.00%	8.75%
	Apr	288	263	25	0.00%	8.75%
	May	288	263	25	0.00%	8.75%
	Jun	289	264	25	0.00%	8.75%
	Jul	296	270	26	0.00%	8.75%
	Aug	306	279	27	0.00%	8.75%
	Sep	283	258	25	0.00%	8.75%
	Oct	286	261	25	0.00%	8.75%
	Nov	299	273	26	0.00%	8.75%
	Dec	310	283	27	0.00%	8.75%
2026	Jan	274	250	24	0.00%	8.75%
	Feb	283	259	25	0.00%	8.75%
	Mar	284	259	25	0.00%	8.75%
	Apr	288	263	25	0.00%	8.75%
	May	289	263	25	0.00%	8.75%
	Jun	289	264	25	0.00%	8.75%
	Jul	296	270	26	0.00%	8.75%
	Aug	306	280	27	0.00%	8.75%
	Sep	283	259	25	0.00%	8.75%
	Oct	286	261	25	0.00%	8.75%
	Nov	299	273	26	0.00%	8.75%
	Dec	311	284	27	0.00%	8.75%
2027	Jan	275	250	24	0.00%	8.81%
	Feb	284	259	25	0.00%	8.81%
	Mar	285	260	25	0.00%	8.81%
	Apr	289	263	25	0.00%	8.81%

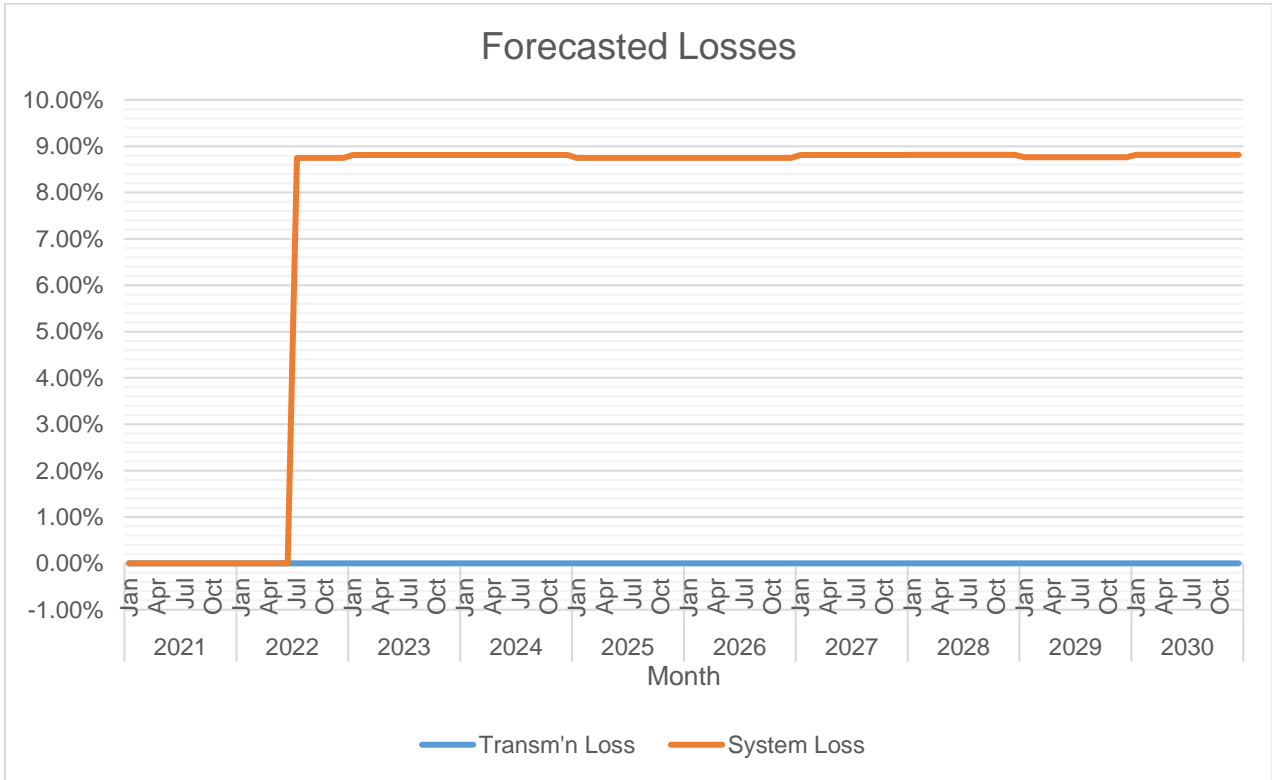
	May	289	264	25	0.00%	8.81%
	Jun	290	264	26	0.00%	8.81%
	Jul	296	270	26	0.00%	8.81%
	Aug	307	280	27	0.00%	8.81%
	Sep	284	259	25	0.00%	8.81%
	Oct	287	261	25	0.00%	8.81%
	Nov	300	273	26	0.00%	8.81%
	Dec	311	284	27	0.00%	8.81%
2028	Jan	275	251	24	0.00%	8.81%
	Feb	284	259	25	0.00%	8.81%
	Mar	285	260	25	0.00%	8.81%
	Apr	289	264	25	0.00%	8.81%
	May	290	264	26	0.00%	8.81%
	Jun	290	264	26	0.00%	8.81%
	Jul	297	271	26	0.00%	8.81%
	Aug	307	280	27	0.00%	8.81%
	Sep	284	259	25	0.00%	8.81%
	Oct	287	262	25	0.00%	8.81%
	Nov	300	274	26	0.00%	8.81%
	Dec	312	284	27	0.00%	8.81%
2029	Jan	275	251	24	0.00%	8.77%
	Feb	284	259	25	0.00%	8.77%
	Mar	285	260	25	0.00%	8.77%
	Apr	289	264	25	0.00%	8.77%
	May	290	264	25	0.00%	8.77%
	Jun	290	265	25	0.00%	8.77%
	Jul	297	271	26	0.00%	8.77%
	Aug	307	280	27	0.00%	8.77%
	Sep	284	259	25	0.00%	8.77%
	Oct	287	262	25	0.00%	8.77%
	Nov	300	274	26	0.00%	8.77%
	Dec	312	285	27	0.00%	8.77%
2030	Jan	275	251	24	0.00%	8.81%
	Feb	284	259	25	0.00%	8.81%
	Mar	285	260	25	0.00%	8.81%
	Apr	289	264	25	0.00%	8.81%
	May	290	264	26	0.00%	8.81%
	Jun	290	264	26	0.00%	8.81%
	Jul	297	271	26	0.00%	8.81%
	Aug	307	280	27	0.00%	8.81%
	Sep	284	259	25	0.00%	8.81%
	Oct	287	262	25	0.00%	8.81%
	Nov	300	274	26	0.00%	8.81%
	Dec	312	284	27	0.00%	8.81%

MWh Offtake was forecasted using Short Term Load Forecasting using Seasonal Effects.

System Loss was calculated through a Load Flow Study conducted on February of 2021 by the Technical Data Processors (TDP) using Synergee software. Based on the same study, the Distribution System can adequately convey electricity to customers.



The MWH Input and System Loss for Aliguay has no progression over the forecast timeline because of the unavailability of historical data.



There is no Sub-Transmission Loss over the forecast timeline since it is an off-grid while System Loss is expected to range from 8.75% to 8.81%.

## Power Supply

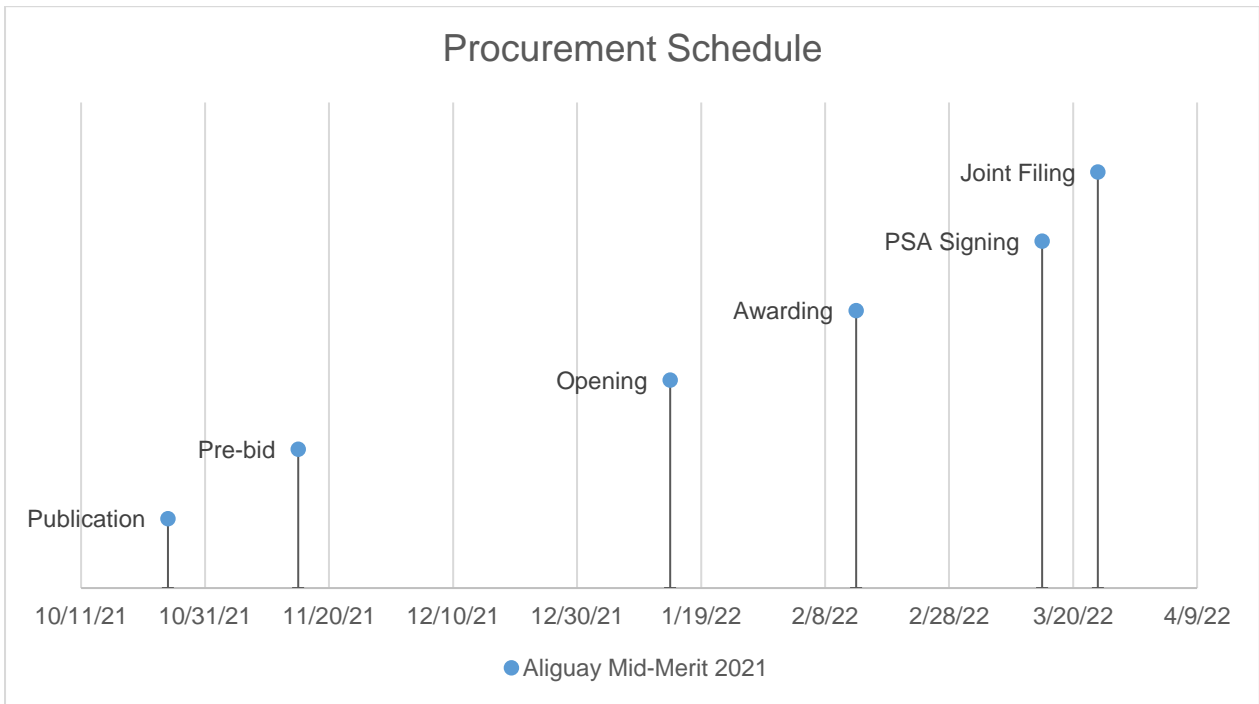
Case No.	Type	GenCo	Minimum MW	Minimum MWh/yr	PSA Start	PSA End
----------	------	-------	------------	----------------	-----------	---------

There is no existing power supply contracts procured for Aliguay Island.

Case No.	Type	GenCo	Minimum MW	Minimum MWh/yr	PSA Start	PSA End
----------	------	-------	------------	----------------	-----------	---------

There is no existing power supply contracts procured for Aliguay Island.

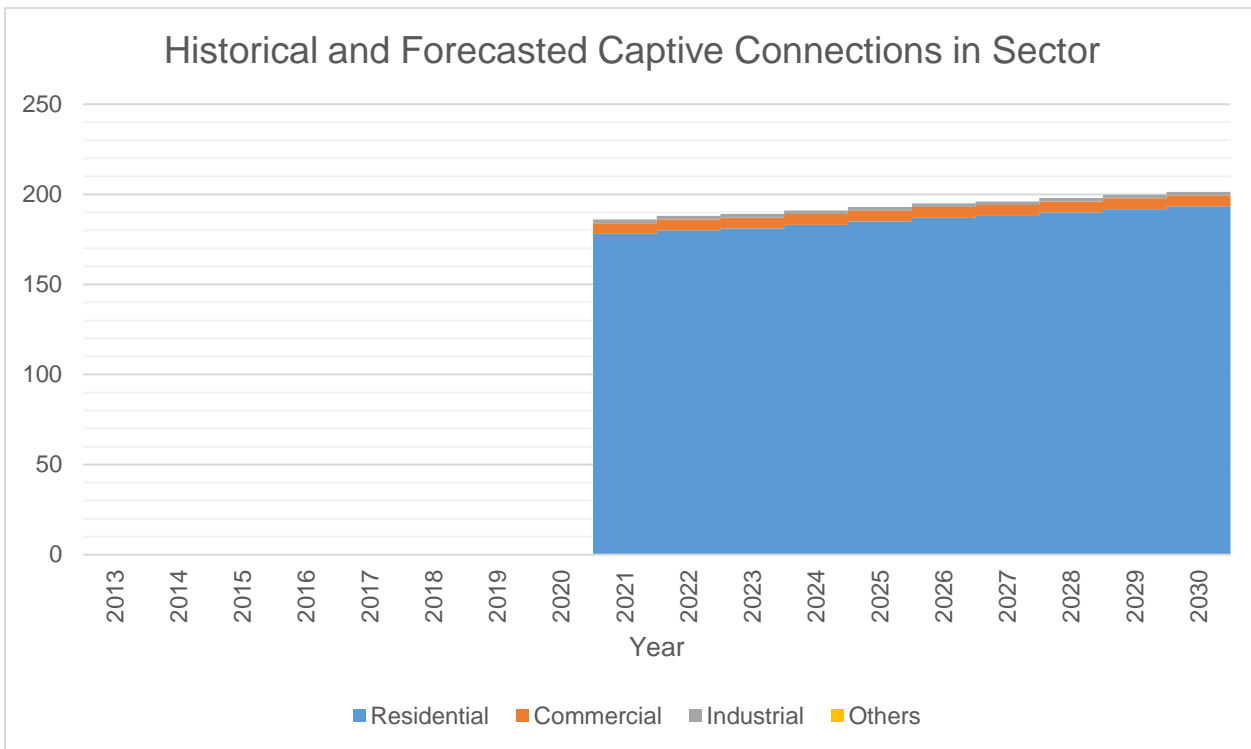
	Aliguay Mid-Merit 2021
Type	Intermediate
Minimum MW	1.00
Minimum MWh/yr	5,256
PSA Start	7/1/2022
PSA End	6/30/2032
Publication	10/25/2021
Pre-bid	11/15/2021
Opening	1/14/2022
Awarding	2/13/2022
PSA Signing	3/15/2022
Joint Filing	3/24/2022



For the procurement of 1 MW of supply which is planned to be available on July 2022, the first publication or launch of CSP will be tentatively on October 25, 2021. Joint filing is planned on March 24, 2022, or 150 days later, in accordance with DOE’s 2018 CSP Policy. These schedules are based on this PSPP for 2021. However, procurement of 1 MW of supply for Aliguay is already approved by DOE under the ZANECO’s PSPP for the year 2020.



# Captive Customer Connections



The number of residential connections is expected to grow at a rate of 1.11% annually. Said customer class is expected to account for 12.38% of the total consumption.