

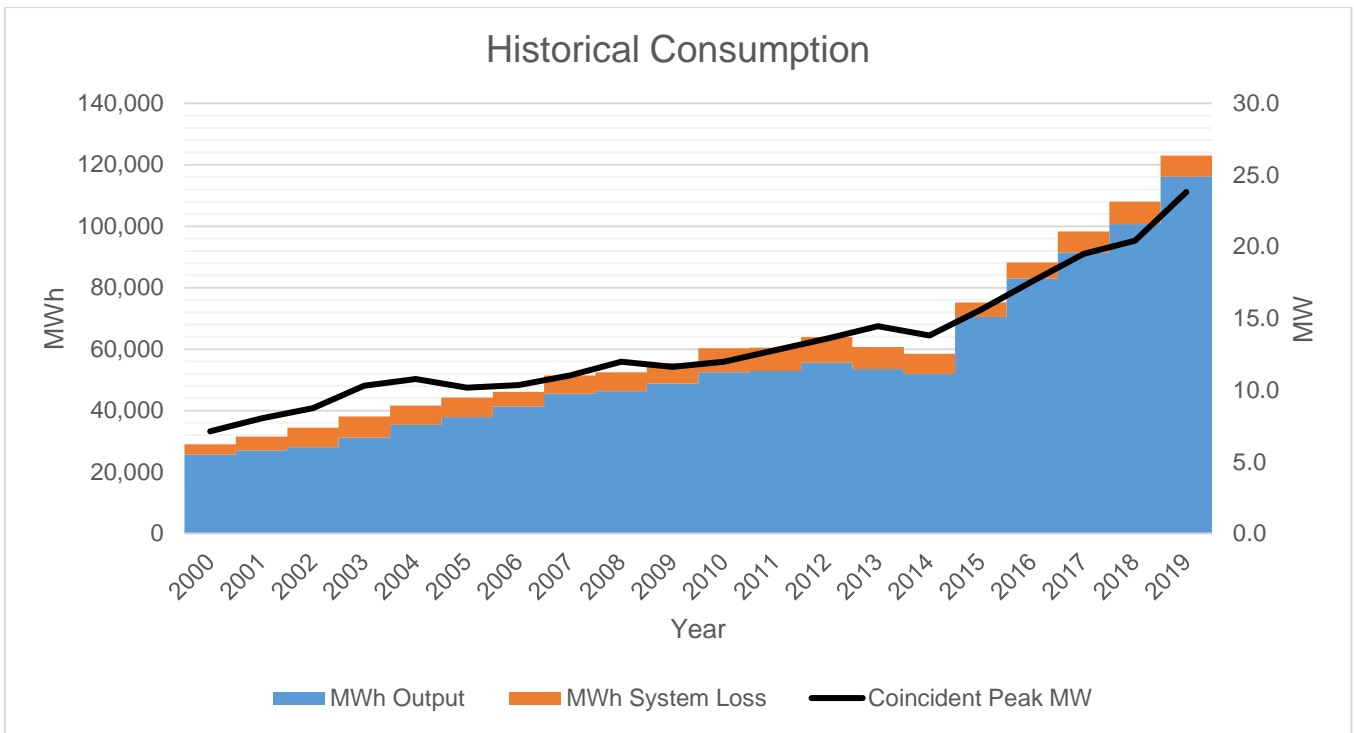
Power Supply Procurement Plan 2020

ILOILO III ELECTRIC COOPERATIVE, INC. (ILECO III)

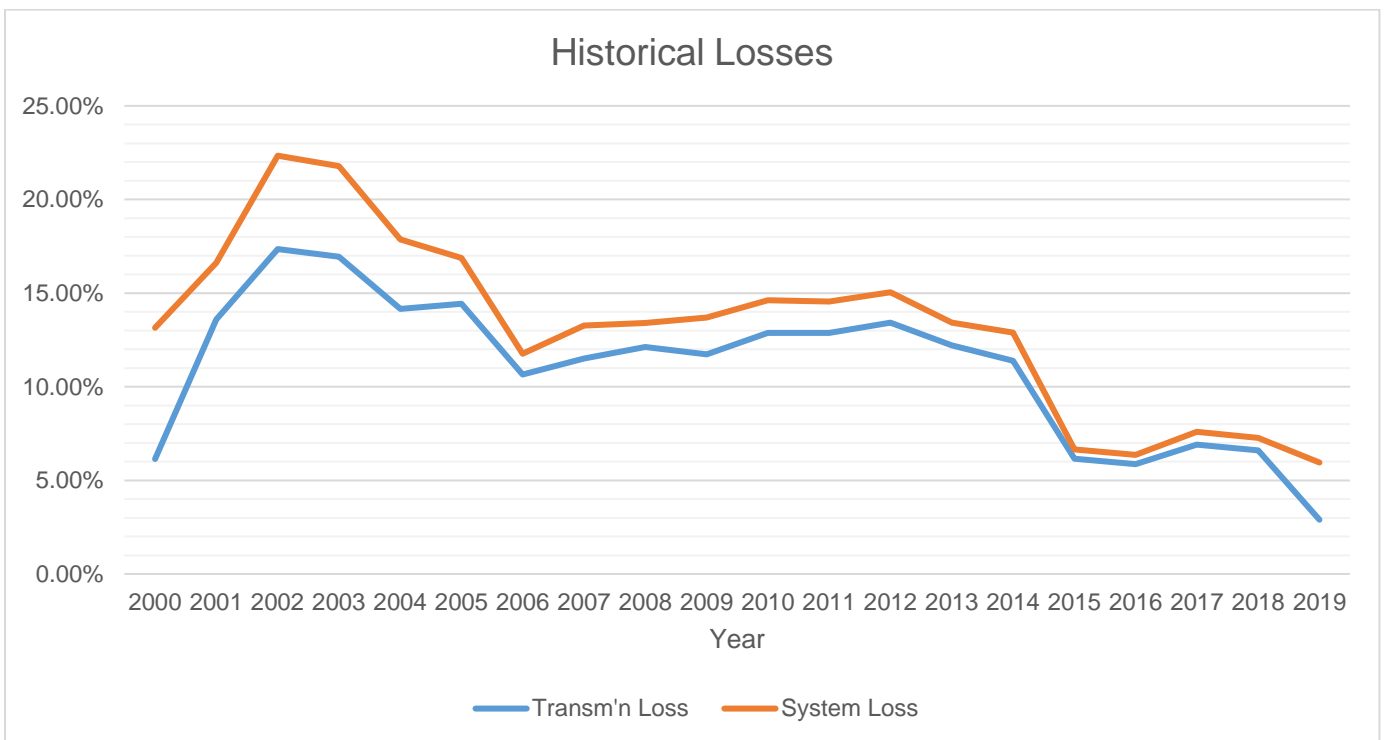
Historical Consumption Data

	Coincident Peak MW	MWh Offtake	WESM	MWh Input	MWh Output	MWh System Loss	Load Factor	Discrepancy	Transm'n Loss	System Loss
2000	7.13	27,335	0	25,657	25,657	3,372	41%	13.14%	6.14%	13.14%
2001	8.03	31,308	0	27,051	27,051	4,497	38%	16.62%	13.60%	16.62%
2002	8.75	34,025	0	28,121	28,121	6,282	37%	22.34%	17.35%	22.34%
2003	10.30	37,634	0	31,260	31,260	6,811	35%	21.79%	16.94%	21.79%
2004	10.77	41,195	0	35,361	35,361	6,321	37%	17.88%	14.16%	17.88%
2005	10.17	44,097	0	37,733	37,902	6,365	42%	17.32%	14.43%	16.87%
2006	10.35	45,979	0	41,082	41,325	4,836	45%	12.36%	10.65%	11.77%
2007	11.03	51,258	0	45,360	45,449	6,017	47%	13.46%	11.51%	13.27%
2008	11.97	52,680	0	46,294	46,294	6,208	44%	13.41%	12.12%	13.41%
2009	11.63	54,960	0	48,511	48,807	6,641	48%	14.30%	11.73%	13.69%
2010	11.97	60,741	0	52,923	52,504	7,733	50%	13.82%	12.87%	14.61%
2011	12.78	60,288	3,928	52,529	52,876	7,644	47%	15.21%	12.87%	14.55%
2012	13.59	63,773	6,157	55,218	55,607	8,303	46%	15.74%	13.41%	15.04%
2013	14.45	60,464	4,053	53,079	53,561	7,123	42%	14.33%	12.21%	13.42%
2014	13.81	58,245	4,126	51,615	51,907	6,652	43%	13.45%	11.38%	12.89%
2015	15.59	74,684	1,951	70,080	70,501	4,666	51%	7.26%	6.16%	6.66%
2016	17.59	87,863	4,774	82,704	82,994	5,258	54%	6.71%	5.87%	6.36%
2017	19.50	98,118	19,160	91,340	91,410	6,933	53%	7.67%	6.91%	7.59%
2018	20.42	107,865	18,932	100,738	100,704	7,325	56%	7.24%	6.61%	7.27%
2019	23.82	119,597	32,362	116,132	116,132	6,912	56%	5.95%	2.90%	5.95%

Peak Demand increased from 20.42 MW in 2018 to 23.82 in 2019 at a rate of 16%. MWh Offtake increased from 107,885 MWh in 2018 to 119,597 MWh in 2019 at a rate of 11%. Within the same period, Load Factor is still the same in years 2018 and 2019 with 56%. There was an abrupt change in consumption on 2019 due to increase of big load customers and increase in consumers' load.

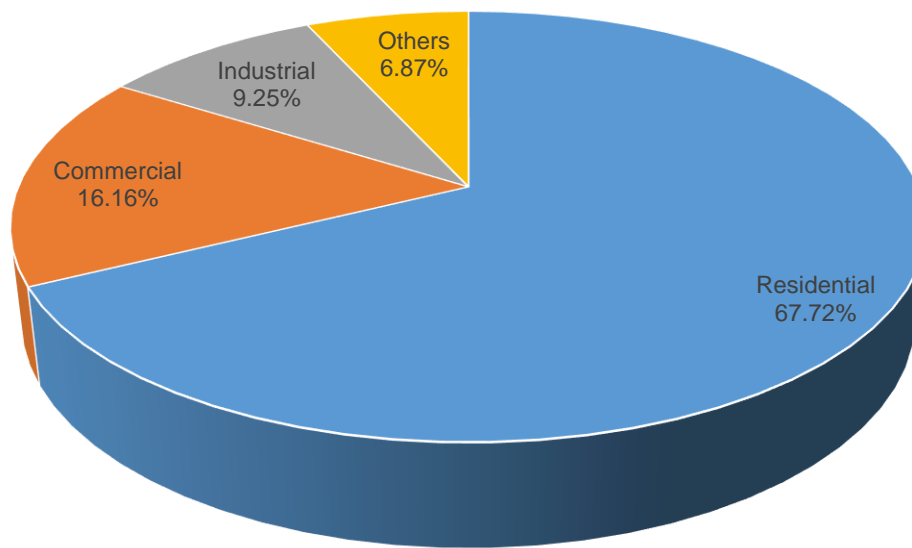


MWh Output increased from year 2018 to year 2019 at a rate of almost 15%, while MWh System Loss decreased at a rate of 4% within the same period.



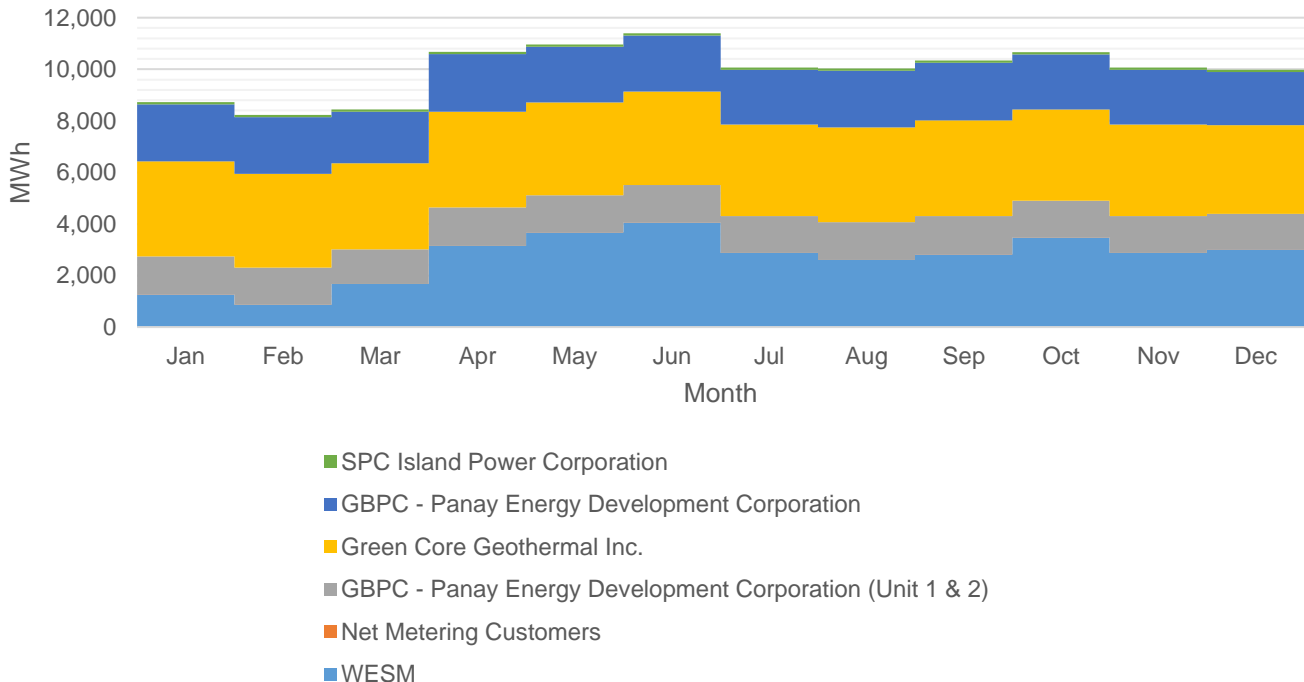
Historically, Transmission Loss ranged from 2.90% to 17.35% while System Loss ranged from 5.95% to 22.34%. Transmission Loss peaked at 17.35% on year 2002. System Loss peaked at 22.34% on year on the same year.

Previous Year's Shares of Energy Sales

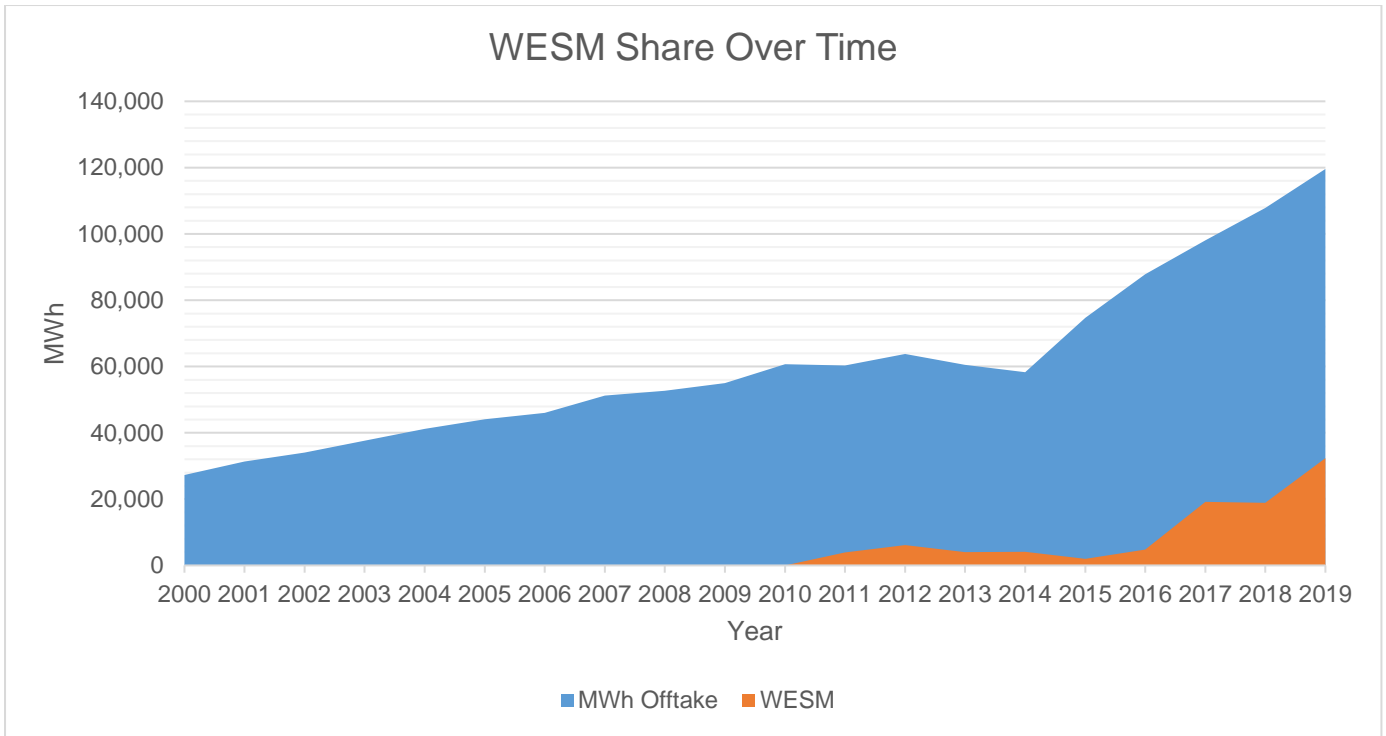


Residential customers account for the bulk of energy sales at 67.72% due to the high number of connections. In contrast, Other (Public Building and Streetlight) customers accounted for only 6.87% of energy sales due to the low number of connections.

MWh Offtake for Last Historical Year

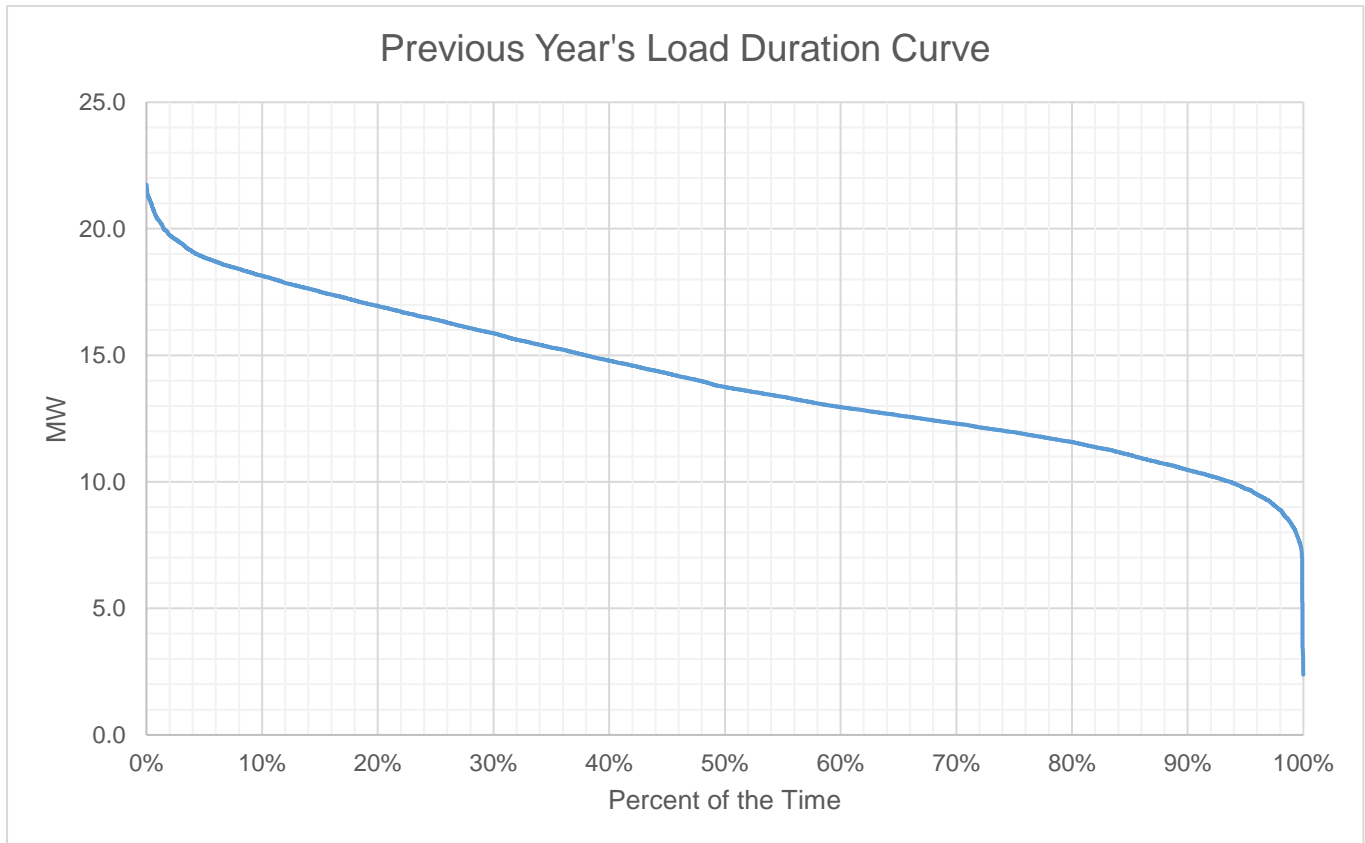


For 2019, the total Offtake for the last historical year is higher. The PSA with Green Core Geothermal, Inc. accounts for the bulk of MWh Offtake.

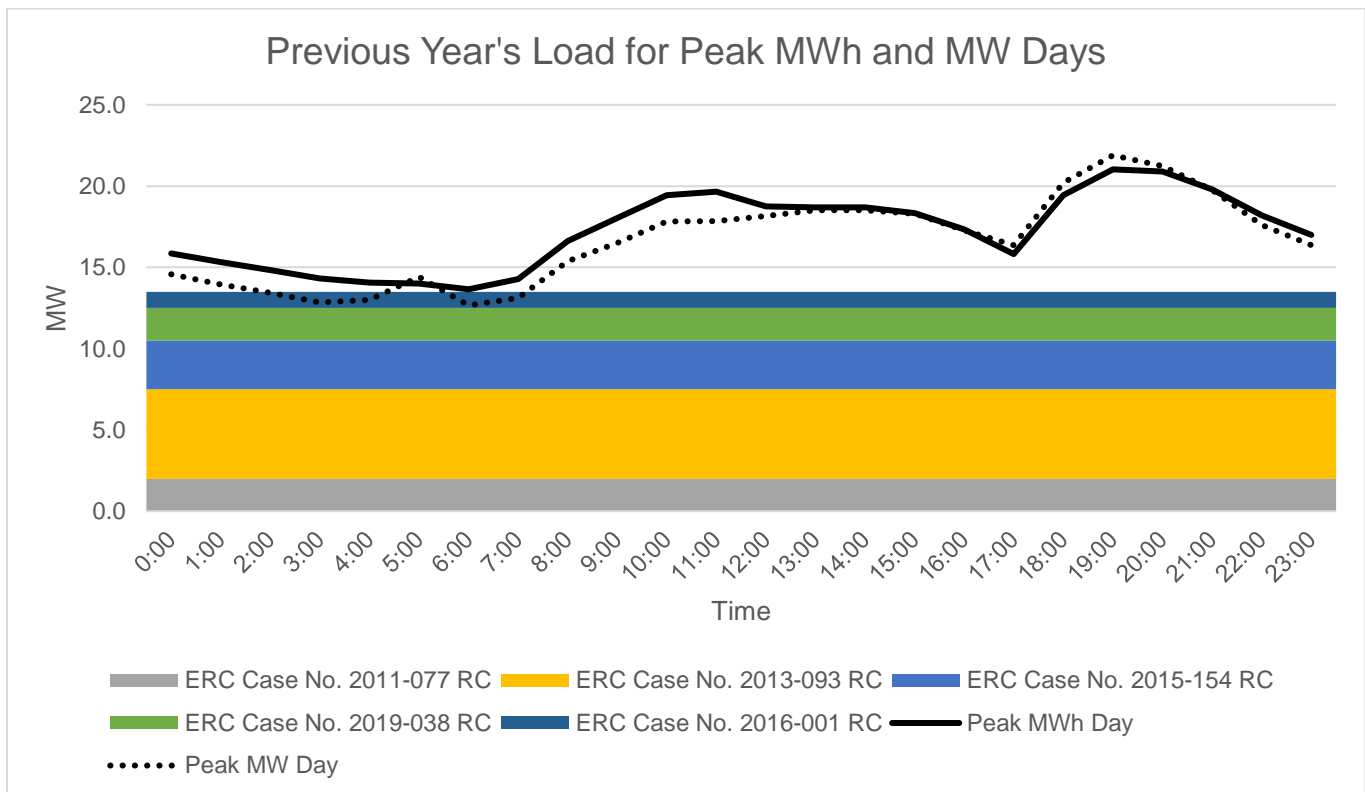


WESM Offtake increased from 107,865 MWh in 2018 to 119,597 MWh in 2019 at a rate of 11% due to increase in MWh Sales. The share of WESM in the total Offtake ranged from 10% to 34%.

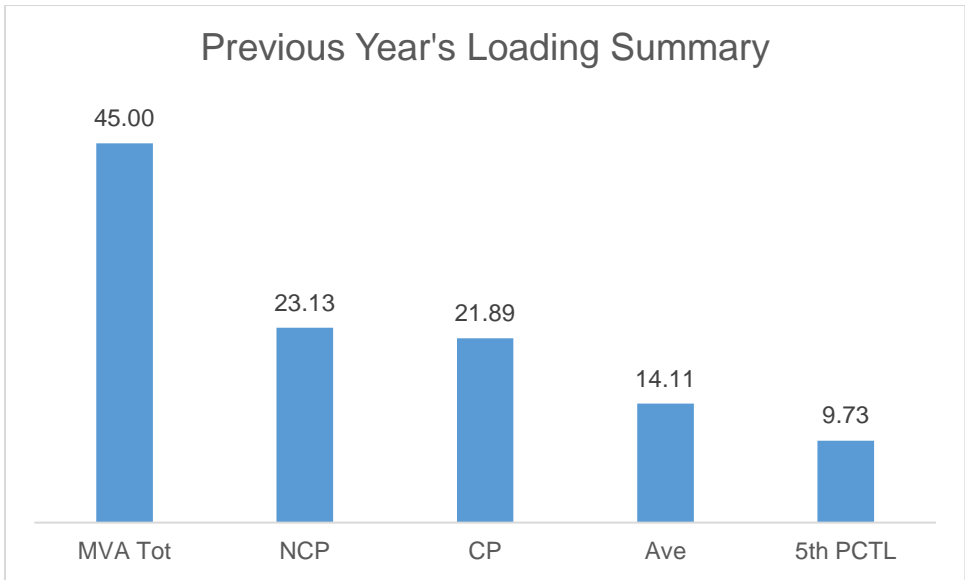
Previous Year's Load Profile



Based on the Load Duration Curve, the minimum load is 2.38 MW and the maximum load is 21.89 MW for the last historical year.



Peak MW occurred on Hour 19 likewise the Peak daily MWh. As shown in the Load Curves, the available supply is lower than the Peak Demand.



The Non-coincident Peak Demand is 23.13 MW, which is around 51% of the total substation capacity of 45 MVA at a power factor of 97.53%. The load factor or the ratio between the Average Load of 14.11 MW and the Non-coincident Peak Demand is 61% of. A safe estimate of the true minimum load is the fifth percentile load of 9.73 MW which is 42% of the Non-coincident Peak Demand.

Metering Point	Substation MVA	Substation Peak MW
CAPTIVE_PDPFILE303	10	6.475
CAPTIVE_PNTILE301	10	8.876
CAPTIVE_PNTILE302	5	3.830
CAPTIVE_PNTILE304	20	3.950

The substations loaded at above 70% are Sara Substation (CAPTIVE_PNTILECO301) and Panian Substation (CAPTIVE_PNTILE302). This loading problem will be solved by additional substation and uprating of the affected substation.

Forecasted Consumption Data

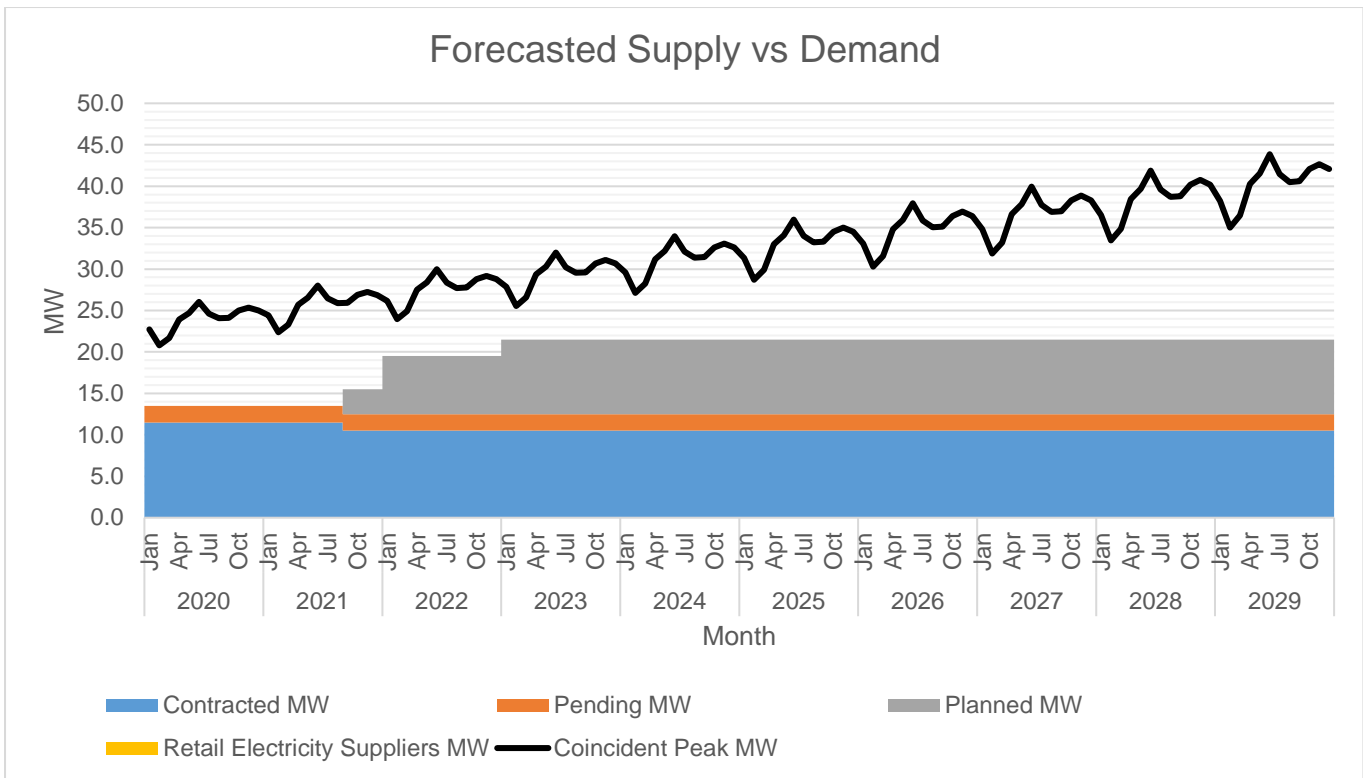
		Coincident Peak MW	Contracted MW	Pending MW	Planned MW	Retail Electricity Suppliers MW	Existing Contracting Level	Target Contracting Level	MW Surplus / Deficit
2020	Jan	22.71	11.50	2.00	0.000		51%	59%	-9.21
	Feb	20.80	11.50	2.00	0.000		55%	65%	-7.30
	Mar	21.66	11.50	2.00	0.000		53%	62%	-8.16
	Apr	23.91	11.50	2.00	0.000		48%	56%	-10.41
	May	24.67	11.50	2.00	0.000		47%	55%	-11.17
	Jun	26.05	11.50	2.00	0.000		44%	52%	-12.55
	Jul	24.62	11.50	2.00	0.000		47%	55%	-11.12
	Aug	24.06	11.50	2.00	0.000		48%	56%	-10.56
	Sep	24.12	11.50	2.00	0.000		48%	56%	-10.62
	Oct	24.99	11.50	2.00	0.000		46%	54%	-11.49
	Nov	25.35	11.50	2.00	0.000		45%	53%	-11.85
	Dec	24.99	11.50	2.00	0.000		46%	54%	-11.49
2021	Jan	24.42	11.50	2.00	0.000		47%	55%	-10.92
	Feb	22.36	11.50	2.00	0.000		51%	60%	-8.86
	Mar	23.29	11.50	2.00	0.000		49%	58%	-9.79
	Apr	25.71	11.50	2.00	0.000		45%	53%	-12.21
	May	26.53	11.50	2.00	0.000		43%	51%	-13.03
	Jun	28.02	11.50	2.00	0.000		41%	48%	-14.52
	Jul	26.47	11.50	2.00	0.000		43%	51%	-12.97
	Aug	25.88	11.50	2.00	0.000		44%	52%	-12.38
	Sep	25.94	10.50	2.00	3.000		40%	60%	-10.44
	Oct	26.88	10.50	2.00	3.000		39%	58%	-11.38
	Nov	27.26	10.50	2.00	3.000		39%	57%	-11.76
	Dec	26.87	10.50	2.00	3.000		39%	58%	-11.37
2022	Jan	26.14	10.50	2.00	7.000		40%	75%	-6.64
	Feb	23.95	10.50	2.00	7.000		44%	81%	-4.45
	Mar	24.94	10.50	2.00	7.000		42%	78%	-5.44
	Apr	27.52	10.50	2.00	7.000		38%	71%	-8.02

	May	28.41	10.50	2.00	7.000		37%	69%	-8.91
	Jun	30.00	10.50	2.00	7.000		35%	65%	-10.50
	Jul	28.34	10.50	2.00	7.000		37%	69%	-8.84
	Aug	27.71	10.50	2.00	7.000		38%	70%	-8.21
	Sep	27.77	10.50	2.00	7.000		38%	70%	-8.27
	Oct	28.78	10.50	2.00	7.000		36%	68%	-9.28
	Nov	29.19	10.50	2.00	7.000		36%	67%	-9.69
	Dec	28.77	10.50	2.00	7.000		36%	68%	-9.27
2023	Jan	27.88	10.50	2.00	9.000		38%	77%	-6.38
	Feb	25.53	10.50	2.00	9.000		41%	84%	-4.03
	Mar	26.59	10.50	2.00	9.000		39%	81%	-5.09
	Apr	29.35	10.50	2.00	9.000		36%	73%	-7.85
	May	30.29	10.50	2.00	9.000		35%	71%	-8.79
	Jun	31.99	10.50	2.00	9.000		33%	67%	-10.49
	Jul	30.22	10.50	2.00	9.000		35%	71%	-8.72
	Aug	29.54	10.50	2.00	9.000		36%	73%	-8.04
	Sep	29.61	10.50	2.00	9.000		35%	73%	-8.11
	Oct	30.69	10.50	2.00	9.000		34%	70%	-9.19
	Nov	31.12	10.50	2.00	9.000		34%	69%	-9.62
	Dec	30.68	10.50	2.00	9.000		34%	70%	-9.18
2024	Jan	29.61	10.50	2.00	9.000		35%	73%	-8.11
	Feb	27.12	10.50	2.00	9.000		39%	79%	-5.62
	Mar	28.25	10.50	2.00	9.000		37%	76%	-6.75
	Apr	31.18	10.50	2.00	9.000		34%	69%	-9.68
	May	32.18	10.50	2.00	9.000		33%	67%	-10.68
	Jun	33.98	10.50	2.00	9.000		31%	63%	-12.48
	Jul	32.11	10.50	2.00	9.000		33%	67%	-10.61
	Aug	31.38	10.50	2.00	9.000		33%	69%	-9.88
	Sep	31.45	10.50	2.00	9.000		33%	68%	-9.95
	Oct	32.60	10.50	2.00	9.000		32%	66%	-11.10
	Nov	33.06	10.50	2.00	9.000		32%	65%	-11.56
	Dec	32.59	10.50	2.00	9.000		32%	66%	-11.09
2025	Jan	31.35	10.50	2.00	9.000		33%	69%	-9.85

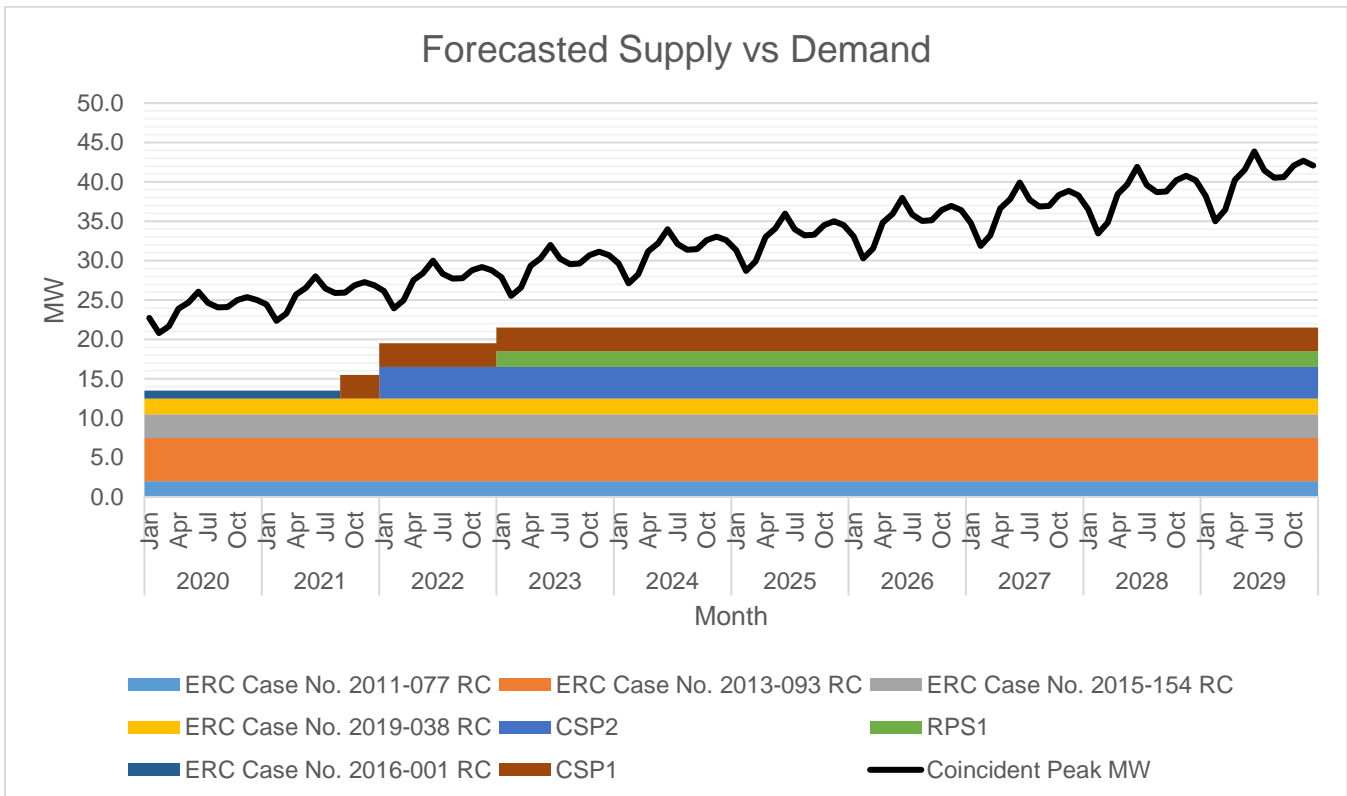
	Feb	28.71	10.50	2.00	9.000		37%	75%	-7.21
	Mar	29.90	10.50	2.00	9.000		35%	72%	-8.40
	Apr	33.00	10.50	2.00	9.000		32%	65%	-11.50
	May	34.06	10.50	2.00	9.000		31%	63%	-12.56
	Jun	35.97	10.50	2.00	9.000		29%	60%	-14.47
	Jul	33.99	10.50	2.00	9.000		31%	63%	-12.49
	Aug	33.22	10.50	2.00	9.000		32%	65%	-11.72
	Sep	33.30	10.50	2.00	9.000		32%	65%	-11.80
	Oct	34.51	10.50	2.00	9.000		30%	62%	-13.01
	Nov	35.00	10.50	2.00	9.000		30%	61%	-13.50
	Dec	34.50	10.50	2.00	9.000		30%	62%	-13.00
2026	Jan	33.08	10.50	2.00	9.000		32%	65%	-11.58
	Feb	30.30	10.50	2.00	9.000		35%	71%	-8.80
	Mar	31.55	10.50	2.00	9.000		33%	68%	-10.05
	Apr	34.82	10.50	2.00	9.000		30%	62%	-13.32
	May	35.95	10.50	2.00	9.000		29%	60%	-14.45
	Jun	37.95	10.50	2.00	9.000		28%	57%	-16.45
	Jul	35.86	10.50	2.00	9.000		29%	60%	-14.36
	Aug	35.05	10.50	2.00	9.000		30%	61%	-13.55
	Sep	35.13	10.50	2.00	9.000		30%	61%	-13.63
	Oct	36.41	10.50	2.00	9.000		29%	59%	-14.91
	Nov	36.93	10.50	2.00	9.000		28%	58%	-15.43
	Dec	36.41	10.50	2.00	9.000		29%	59%	-14.91
2027	Jan	34.80	10.50	2.00	9.000		30%	62%	-13.30
	Feb	31.87	10.50	2.00	9.000		33%	67%	-10.37
	Mar	33.20	10.50	2.00	9.000		32%	65%	-11.70
	Apr	36.64	10.50	2.00	9.000		29%	59%	-15.14
	May	37.82	10.50	2.00	9.000		28%	57%	-16.32
	Jun	39.93	10.50	2.00	9.000		26%	54%	-18.43
	Jul	37.73	10.50	2.00	9.000		28%	57%	-16.23
	Aug	36.88	10.50	2.00	9.000		28%	58%	-15.38
	Sep	36.96	10.50	2.00	9.000		28%	58%	-15.46
	Oct	38.31	10.50	2.00	9.000		27%	56%	-16.81

	Nov	38.85	10.50	2.00	9.000		27%	55%	-17.35
	Dec	38.30	10.50	2.00	9.000		27%	56%	-16.80
2028	Jan	36.52	10.50	2.00	9.000		29%	59%	-15.02
	Feb	33.45	10.50	2.00	9.000		31%	64%	-11.95
	Mar	34.83	10.50	2.00	9.000		30%	62%	-13.33
	Apr	38.45	10.50	2.00	9.000		27%	56%	-16.95
	May	39.68	10.50	2.00	9.000		26%	54%	-18.18
	Jun	41.90	10.50	2.00	9.000		25%	51%	-20.40
	Jul	39.59	10.50	2.00	9.000		27%	54%	-18.09
	Aug	38.70	10.50	2.00	9.000		27%	56%	-17.20
	Sep	38.79	10.50	2.00	9.000		27%	55%	-17.29
	Oct	40.20	10.50	2.00	9.000		26%	53%	-18.70
	Nov	40.77	10.50	2.00	9.000		26%	53%	-19.27
	Dec	40.19	10.50	2.00	9.000		26%	53%	-18.69
2029	Jan	38.22	10.50	2.00	9.000		27%	56%	-16.72
	Feb	35.01	10.50	2.00	9.000		30%	61%	-13.51
	Mar	36.46	10.50	2.00	9.000		29%	59%	-14.96
	Apr	40.24	10.50	2.00	9.000		26%	53%	-18.74
	May	41.54	10.50	2.00	9.000		25%	52%	-20.04
	Jun	43.86	10.50	2.00	9.000		24%	49%	-22.36
	Jul	41.44	10.50	2.00	9.000		25%	52%	-19.94
	Aug	40.51	10.50	2.00	9.000		26%	53%	-19.01
	Sep	40.60	10.50	2.00	9.000		26%	53%	-19.10
	Oct	42.07	10.50	2.00	9.000		25%	51%	-20.57
	Nov	42.67	10.50	2.00	9.000		25%	50%	-21.17
	Dec	42.07	10.50	2.00	9.000		25%	51%	-20.57

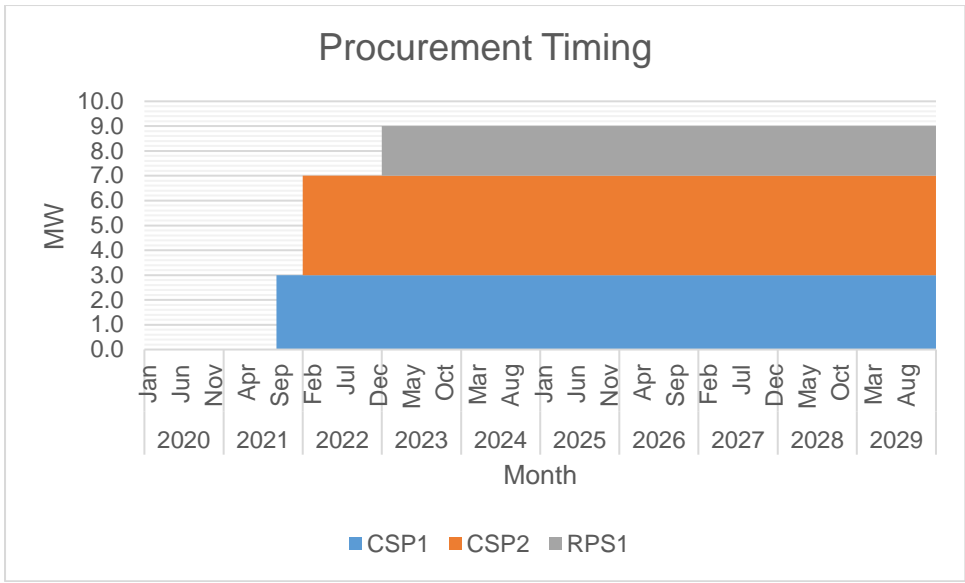
The Peak Demand was assumed to occur on the month of June. Monthly Peak Demand is at its lowest on the month of February due to cold weather. In general, Peak Demand is expected to grow at a rate of 6% annually.



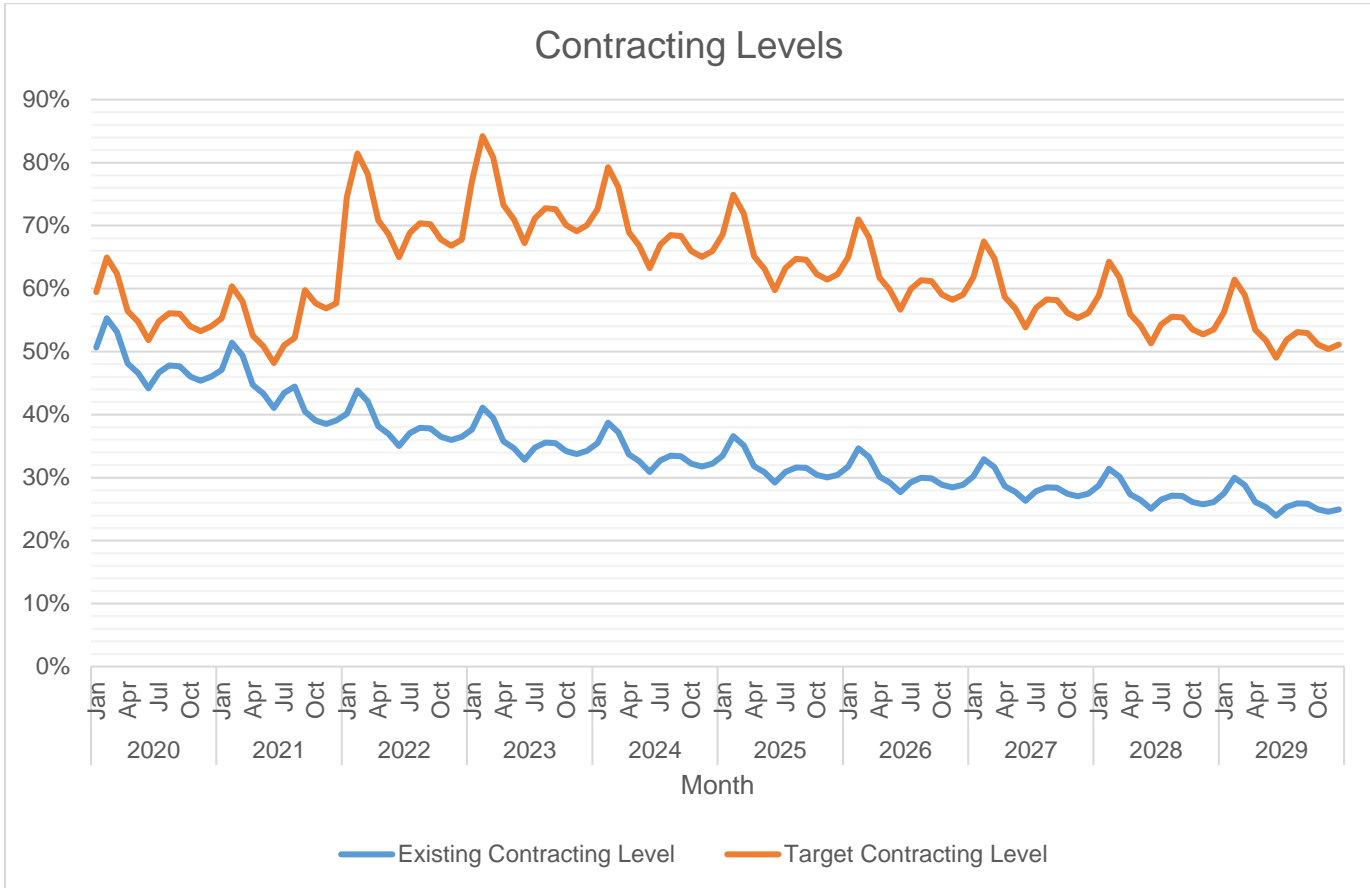
The available supply is generally below the Peak Demand.



Of the available supply, the largest is 5.5 MW from Green Core Geothermal, Inc. (GCGI). This is followed by 5 MW from CSP1. This is followed by 3 MW each from Panay Energy Development Corp. (PEDC) - Unit 3 and CSP2. This is followed by 2 MW from Panay Energy Development Corp. (PEDC) - Unit 1 & 2, GNPOWER Mariveles Coal Plant Ltd. (GMCP) and RPS1 with 2 MW each and 1 MW from SPC Island Power Corp. (SIPC).

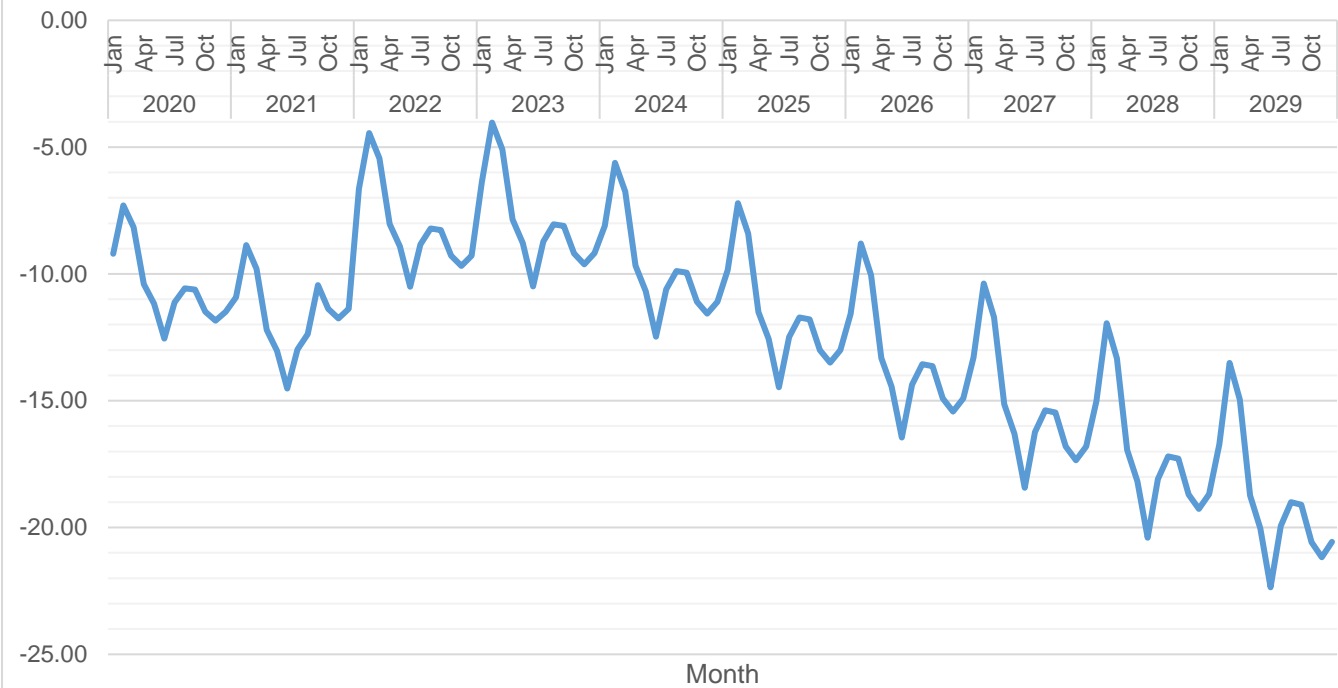


The first wave of supply procurement will be for 3 MW planned to be available by the month of September 2021. This will be followed by 4 MW planned to be available by the month of January 2022 and another 2 MW to be available by January 2023.



Currently, there is under-contracting by 15%. The highest target contracting level is 84% which is expected to occur on February 2023. The lowest target contracting level is 48% which is expected to occur on June 2021.

MW Surplus / Deficit

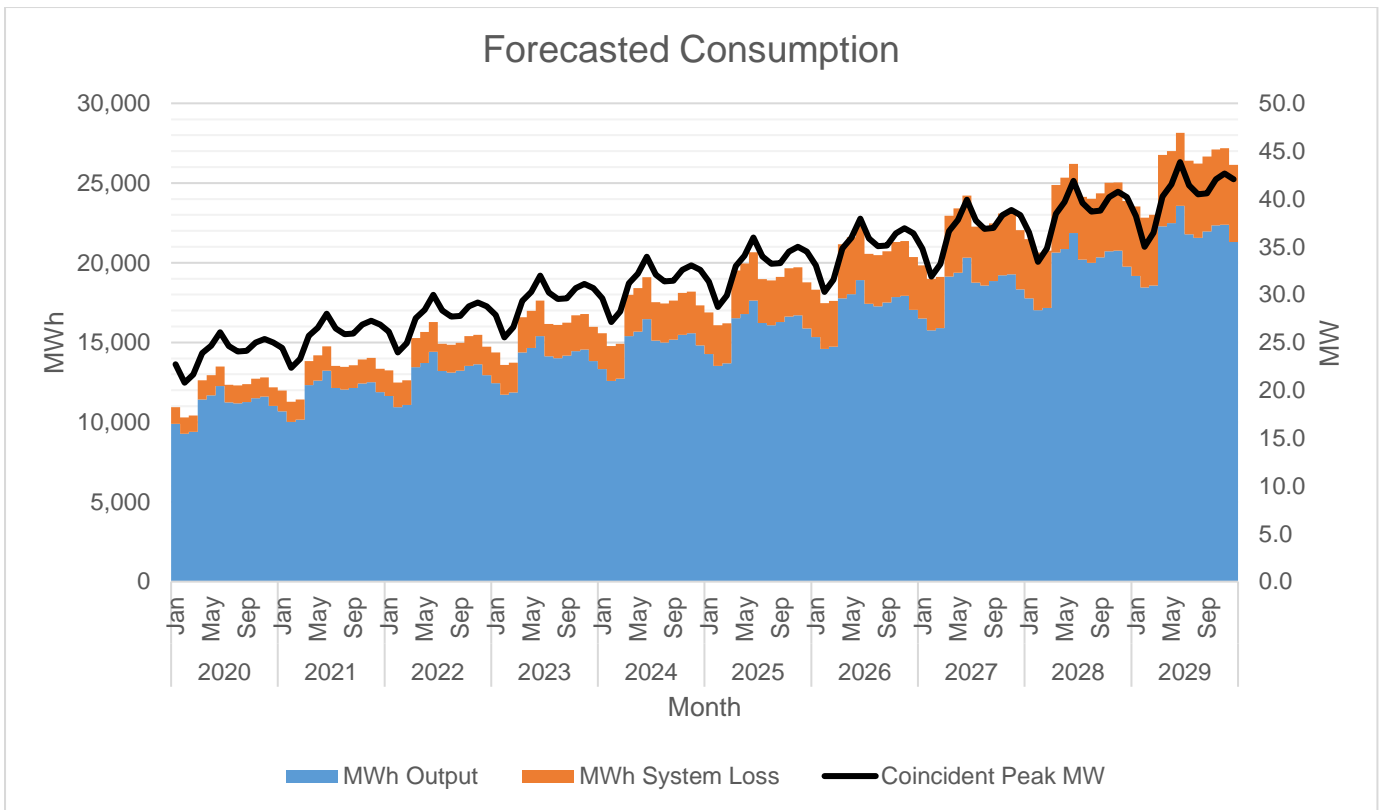


Currently, there is under-contracting by 10 MW. The highest deficit is 22.40 MW which is expected to occur on the month of June 2029. The lowest deficit is 4.03 MW which is expected to occur on the month of February 2023.

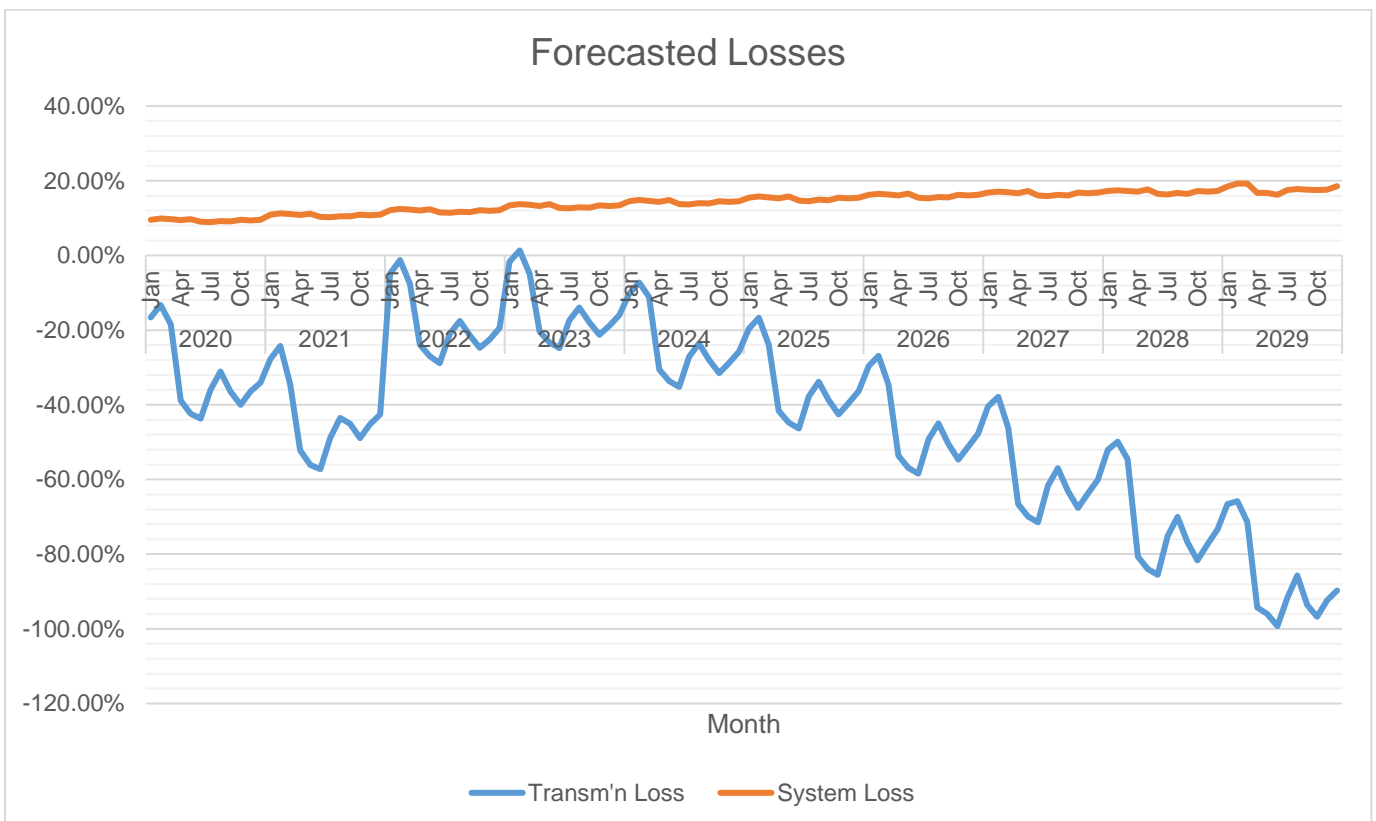
		MWh Offtake	MWh Output	MWh System Loss	Transm'n Loss	System Loss
2020	Jan	9,388	9,901	1,042	-16.56%	9.52%
	Feb	9,088	9,275	1,014	-13.22%	9.86%
	Mar	8,788	9,403	1,009	-18.48%	9.70%
	Apr	9,088	11,429	1,193	-38.89%	9.45%
	May	9,088	11,682	1,263	-42.44%	9.75%
	Jun	9,388	12,271	1,216	-43.66%	9.01%
	Jul	9,088	11,252	1,104	-35.96%	8.94%
	Aug	9,388	11,176	1,128	-31.06%	9.17%
	Sep	9,088	11,267	1,130	-36.41%	9.12%
	Oct	9,088	11,512	1,213	-40.02%	9.53%
	Nov	9,388	11,603	1,204	-36.42%	9.40%
	Dec	9,088	11,022	1,162	-34.07%	9.54%
2021	Jan	9,388	10,685	1,309	-27.76%	10.92%
	Feb	9,088	10,018	1,274	-24.25%	11.28%
	Mar	8,488	10,154	1,268	-34.57%	11.10%
	Apr	9,088	12,334	1,499	-52.21%	10.84%
	May	9,088	12,601	1,586	-56.11%	11.18%
	Jun	9,388	13,237	1,527	-57.27%	10.34%
	Jul	9,088	12,138	1,387	-48.83%	10.26%
	Aug	9,388	12,053	1,417	-43.48%	10.52%
	Sep	9,360	12,155	1,420	-45.03%	10.46%
	Oct	9,360	12,419	1,524	-48.96%	10.93%
	Nov	9,660	12,516	1,512	-45.22%	10.78%

	Dec	9,360	11,888	1,460	-42.61%	10.94%
2022	Jan	12,636	11,643	1,604	-4.84%	12.11%
	Feb	12,336	10,934	1,561	-1.29%	12.49%
	Mar	11,736	11,078	1,554	-7.64%	12.30%
	Apr	12,336	13,442	1,837	-23.86%	12.02%
	May	12,336	13,720	1,944	-26.97%	12.41%
	Jun	12,636	14,409	1,871	-28.84%	11.49%
	Jul	12,336	13,217	1,700	-20.92%	11.39%
	Aug	12,636	13,117	1,736	-17.55%	11.69%
	Sep	12,336	13,240	1,740	-21.43%	11.61%
	Oct	12,336	13,523	1,867	-24.76%	12.13%
	Nov	12,636	13,626	1,853	-22.49%	11.97%
	Dec	12,336	12,942	1,789	-19.41%	12.14%
2023	Jan	14,124	12,446	1,921	-1.72%	13.37%
	Feb	13,776	11,721	1,870	1.34%	13.76%
	Mar	13,080	11,868	1,861	-4.97%	13.56%
	Apr	13,776	14,380	2,200	-20.35%	13.27%
	May	13,776	14,655	2,328	-23.28%	13.71%
	Jun	14,124	15,391	2,241	-24.84%	12.71%
	Jul	13,776	14,131	2,036	-17.35%	12.59%
	Aug	14,124	14,019	2,080	-13.98%	12.92%
	Sep	13,776	14,166	2,084	-17.96%	12.82%
	Oct	13,776	14,463	2,236	-21.22%	13.39%
	Nov	14,124	14,564	2,219	-18.83%	13.22%
	Dec	13,776	13,836	2,142	-15.99%	13.41%
2024	Jan	14,124	13,322	2,256	-10.30%	14.48%
	Feb	13,776	12,585	2,196	-7.30%	14.85%
	Mar	13,428	12,734	2,185	-11.11%	14.65%
	Apr	13,776	15,405	2,583	-30.58%	14.36%
	May	13,776	15,675	2,733	-33.63%	14.85%
	Jun	14,124	16,460	2,632	-35.17%	13.79%
	Jul	13,776	15,128	2,390	-27.16%	13.65%
	Aug	14,124	15,003	2,442	-23.51%	14.00%
	Sep	13,776	15,178	2,447	-27.94%	13.88%
	Oct	13,776	15,489	2,626	-31.50%	14.49%
	Nov	14,124	15,586	2,606	-28.80%	14.32%
	Dec	13,776	14,810	2,515	-25.77%	14.52%
2025	Jan	14,124	14,283	2,605	-19.57%	15.42%
	Feb	13,776	13,538	2,535	-16.68%	15.77%
	Mar	13,080	13,687	2,523	-23.93%	15.57%
	Apr	13,776	16,532	2,983	-41.65%	15.28%
	May	13,776	16,793	3,156	-44.81%	15.82%
	Jun	14,124	17,630	3,039	-46.34%	14.70%
	Jul	13,776	16,221	2,760	-37.78%	14.54%
	Aug	14,124	16,081	2,819	-33.82%	14.92%
	Sep	13,776	16,290	2,825	-38.75%	14.78%
	Oct	13,776	16,616	3,031	-42.62%	15.43%
	Nov	14,124	16,706	3,008	-39.58%	15.26%
	Dec	13,776	15,878	2,904	-36.34%	15.46%

2026	Jan	14,124	15,340	2,964	-29.60%	16.19%
	Feb	13,776	14,591	2,885	-26.86%	16.51%
	Mar	13,080	14,738	2,871	-34.63%	16.31%
	Apr	13,776	17,772	3,394	-53.65%	16.04%
	May	13,776	18,021	3,591	-56.89%	16.62%
	Jun	14,124	18,916	3,458	-58.41%	15.46%
	Jul	13,776	17,424	3,141	-49.28%	15.27%
	Aug	14,124	17,267	3,209	-44.97%	15.67%
	Sep	13,776	17,514	3,214	-50.47%	15.51%
	Oct	13,776	17,855	3,450	-54.65%	16.19%
	Nov	14,124	17,935	3,424	-51.23%	16.03%
	Dec	13,776	17,050	3,305	-47.76%	16.24%
2027	Jan	14,124	16,501	3,332	-40.42%	16.80%
	Feb	13,776	15,752	3,243	-37.89%	17.07%
	Mar	13,080	15,896	3,228	-46.21%	16.88%
	Apr	13,776	19,136	3,816	-66.61%	16.62%
	May	13,776	19,370	4,037	-69.91%	17.25%
	Jun	14,124	20,326	3,887	-71.43%	16.05%
	Jul	13,776	18,745	3,531	-61.70%	15.85%
	Aug	14,124	18,569	3,607	-57.01%	16.27%
	Sep	13,776	18,860	3,614	-63.13%	16.08%
	Oct	13,776	19,216	3,878	-67.64%	16.79%
	Nov	14,124	19,283	3,849	-63.78%	16.64%
	Dec	13,776	18,337	3,715	-60.07%	16.85%
2028	Jan	14,124	17,778	3,707	-52.11%	17.25%
	Feb	13,776	17,034	3,608	-49.84%	17.48%
	Mar	13,428	17,171	3,591	-54.62%	17.30%
	Apr	13,776	20,638	4,245	-80.62%	17.06%
	May	13,776	20,852	4,491	-83.96%	17.72%
	Jun	14,124	21,874	4,324	-85.49%	16.51%
	Jul	13,776	20,197	3,927	-75.12%	16.28%
	Aug	14,124	19,999	4,012	-70.00%	16.71%
	Sep	13,776	20,339	4,020	-76.82%	16.50%
	Oct	13,776	20,711	4,314	-81.66%	17.24%
	Nov	14,124	20,762	4,281	-77.31%	17.10%
	Dec	13,776	19,748	4,133	-73.35%	17.31%
2029	Jan	14,124	19,180	4,347	-66.57%	18.48%
	Feb	13,776	18,445	4,392	-65.77%	19.23%
	Mar	13,428	18,574	4,437	-71.36%	19.28%
	Apr	13,776	22,287	4,482	-94.31%	16.74%
	May	13,776	22,478	4,527	-96.02%	16.76%
	Jun	14,124	23,572	4,571	-99.26%	16.24%
	Jul	13,776	21,790	4,616	-91.69%	17.48%
	Aug	14,124	21,568	4,661	-85.71%	17.77%
	Sep	13,776	21,963	4,706	-93.59%	17.65%
	Oct	13,776	22,353	4,751	-96.75%	17.53%
	Nov	14,124	22,382	4,796	-92.43%	17.65%
	Dec	13,776	21,295	4,841	-89.73%	18.52%



MWh Output was expected to grow at an average rate of 8% annually.



Transmission Loss is expected to range from -99.26% to 1.34% while System Loss is expected to range from 8.94% to 19.28%.

Power Supply

Case No.	Type	GenCo	Minimum MW	Minimum MWh/yr	PSA Start	PSA End
2013-093 RC	Base	Green Core Geothermal, Inc.	5.50	8,766	12/26/2012	12/25/2030
2011-077 RC	Base	Panay Energy Development Corporation	2.00	26,280	3/26/2011	3/25/2036
2015-154 RC	Base	Panay Energy Development Corporation	3.00	17,520	7/26/2016	7/25/2041
2016-001 RC	Peaking	SPC Power Corporation	1.00	1,056	8/26/2016	8/25/2021

The PSA with Green Core Geothermal, Inc. (GCGI) filed with ERC under Case No. 2013-093 RC. It was selected to provide base requirements. Historically, the utilization of the PSA is 100%. Outages of the plant led to unserved energy of around 3,960 MWh in the past year. The actual billed overall monthly charge under the PSA ranged from 5.100 P/kWh to 5.49 P/KWh in the same period.

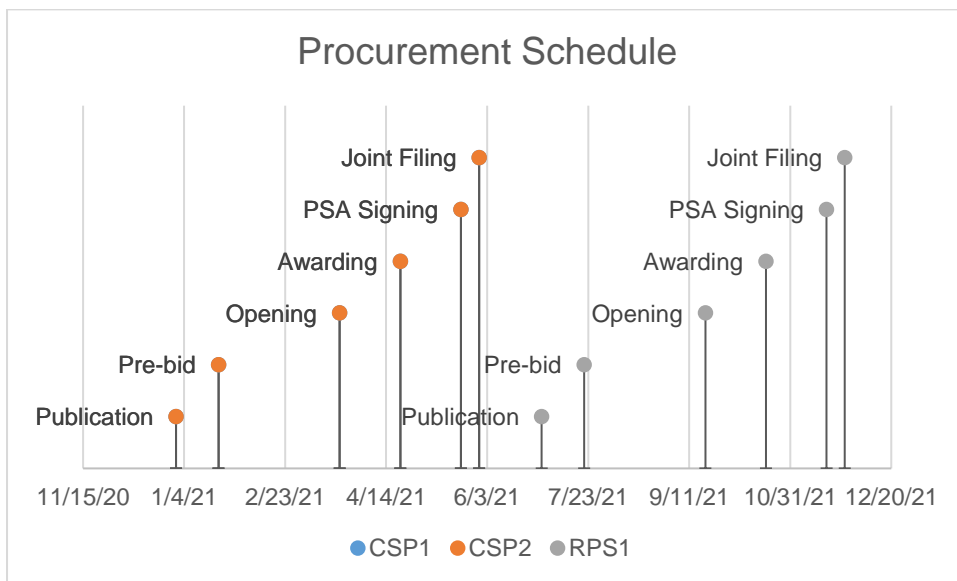
The PSA with Panay Energy Development Corporation (PEDC) filed with ERC under Case Nos. 2011-077 RC and 2015-154 RC. It was selected to provide base requirements. Historically, the utilization of the PSA is 100%. Outages of the plant led to unserved energy of around 1,440 and 2,160 MWh in the past year respectively. The actual billed overall monthly charge under the PSA ranged from 5.00 P/kWh to 6.00 P/KWh in the same period.

The PSA with SPC Power Corporation filed with ERC under Case No. 2016-001 RC. It was selected to provide peaking requirements. Historically, the utilization of the PSA is 100%. The actual billed overall monthly charge under the PSA ranged from 9.00 P/kWh to 10 P/KWh in the same period.

Case No.	Type	GenCo	Minimum MW	Minimum MWh/yr	PSA Start	PSA End
2019-038	Base	GN Power Mariveles Coal Plant Ltd.	2.00	17,520	12/26/2019	12/25/2037

The PSA with GNPOWER Mariveles Coal Plant Ltd. (GMCP) filed with ERC under Case No. 2019-038. It was selected to provide for base requirements. Historically, the utilization of the PSA is 100%. Outages of the plant led to unserved energy of around 1,440 MWh in the past year. The actual billed overall monthly charge under the PSA ranged from 4.00 P/kWh to 5.00 P/KWh in the same period.

	CSP1	CSP2	RPS1
Type	Peaking	Base	Base
Minimum MW	3.00	4.00	2.00
Minimum MWh/yr	4,320	35,040	17,520
PSA Start	8/26/2021	12/26/2021	12/26/2022
PSA End	8/25/2031	12/25/2046	12/25/2047
Publication	12/31/2020	12/31/2020	6/30/2021
Pre-bid	1/21/2021	1/21/2021	7/21/2021
Opening	3/22/2021	3/22/2021	9/19/2021
Awarding	4/21/2021	4/21/2021	10/19/2021
PSA Signing	5/21/2021	5/21/2021	11/18/2021
Joint Filing	5/30/2021	5/30/2021	11/27/2021

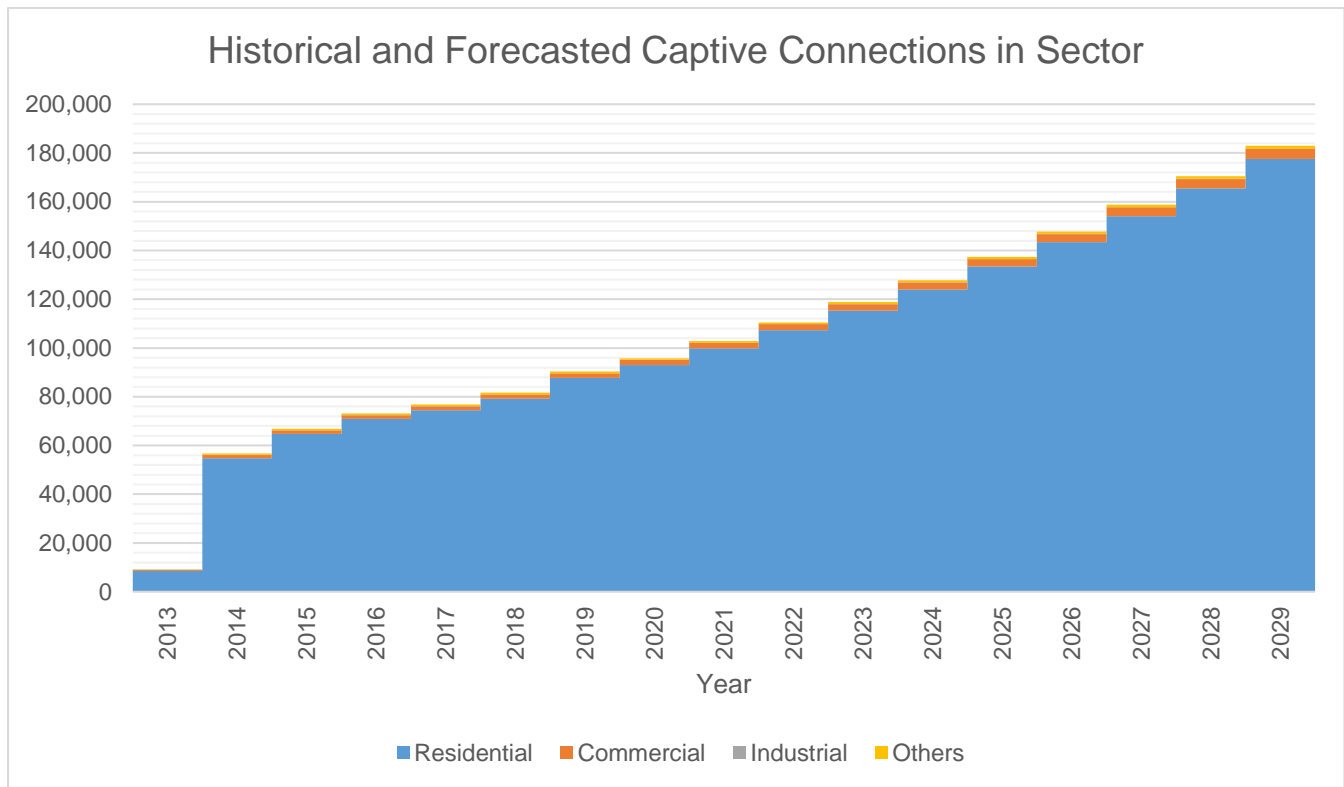


For the procurement of 3 MW (CSP1) of supply (Peaking) which is planned to be available on September 2021, the first publication or launch of CSP will be on December 31, 2020. Joint filing is planned on May 30, 2021, or 150 days later, in accordance with DOE's 2018 CSP Policy.

For the procurement of 4 MW (CSP1) of supply (Based) which is planned to be available on January 2022, the first publication or launch of CSP will be on December 31, 2020. Joint filing is planned on May 30, 2021, or 150 days later, in accordance with DOE's 2018 CSP Policy.

For the procurement of 2 MW (RPS1) of supply (Based) which is planned to be available on January 2023, the first publication or launch of CSP will be on June 30, 2021. Joint filing is planned on November 27, 2021, or 150 days later, in accordance with DOE's 2018 CSP Policy.

Captive Customer Connections



The number of Residential connections is expected to grow at an average rate of 7% annually. The said customer class is expected to account for 97% of the total consumption.